

Datasheet for ABIN7169222  
**anti-WNK1 antibody (AA 1-207)**[Go to Product page](#)

## 3 Images

## Overview

Quantity:	100 µg
Target:	WNK1
Binding Specificity:	AA 1-207
Reactivity:	Human
Host:	Rabbit
Clonality:	Polyclonal
Conjugate:	This WNK1 antibody is un-conjugated
Application:	ELISA, Immunohistochemistry (IHC), Immunofluorescence (IF)

## Product Details

Immunogen:	Recombinant Human Serine/threonine-protein kinase WNK1 protein (1-207AA)
Isotype:	IgG
Cross-Reactivity:	Human
Purification:	>95%, Protein G purified

## Target Details

Target:	WNK1
Alternative Name:	WNK1 ( <a href="#">WNK1 Products</a> )
Background:	Background: Serine/threonine kinase which plays an important role in the regulation of electrolyte homeostasis, cell signaling, survival, and proliferation. Acts as an activator and

## Target Details

inhibitor of sodium-coupled chloride cotransporters and potassium-coupled chloride cotransporters respectively. Activates SCNN1A, SCNN1B, SCNN1D and SGK1. Controls sodium and chloride ion transport by inhibiting the activity of WNK4, by either phosphorylating the kinase or via an interaction between WNK4 and the autoinhibitory domain of WNK1. WNK4 regulates the activity of the thiazide-sensitive Na-Cl cotransporter, SLC12A3, by phosphorylation. WNK1 may also play a role in actin cytoskeletal reorganization. Phosphorylates NEDD4L. Acts as a scaffold to inhibit SLC4A4, SLC26A6 as well as CFTR activities and surface expression, recruits STK39 which mediates the inhibition (By similarity). Aliases: Erythrocyte 65 kDa protein antibody, HSN2 antibody, HSN2 antibody, hWNK1 antibody, KDP antibody, KIAA0344 antibody, Kinase deficient protein antibody, MGC163339 antibody, MGC163341 antibody, p65 antibody, PPP1R167 antibody, PRKWNK1 antibody, Prostate derived sterile 20 like kinase antibody, Protein kinase lysine deficient 1 antibody, Protein kinase lysine-deficient 1 antibody, Protein kinase with no lysine 1 antibody, Protein phosphatase 1, regulatory subunit 167 antibody, PSK antibody, Serine/threonine protein kinase WNK1 1 antibody, Serine/threonine protein kinase WNK1 2 antibody, Serine/threonine protein kinase WNK1 antibody, Serine/threonine-protein kinase WNK1 antibody, With no K antibody, WNK lysine deficient protein kinase 1 antibody, WNK lysine deficient protein kinase 1 isoform antibody, WNK1 antibody, WNK1\_HUMAN antibody

UniProt: [Q9H4A3](#)

## Application Details

Application Notes: Recommended dilution: IHC:1:20-1:200, IF:1:50-1:200,

Restrictions: For Research Use only

## Handling

Format: Liquid

Buffer: Preservative: 0.03 % Proclin 300  
Constituents: 50 % Glycerol, 0.01M PBS, pH 7.4

Preservative: ProClin

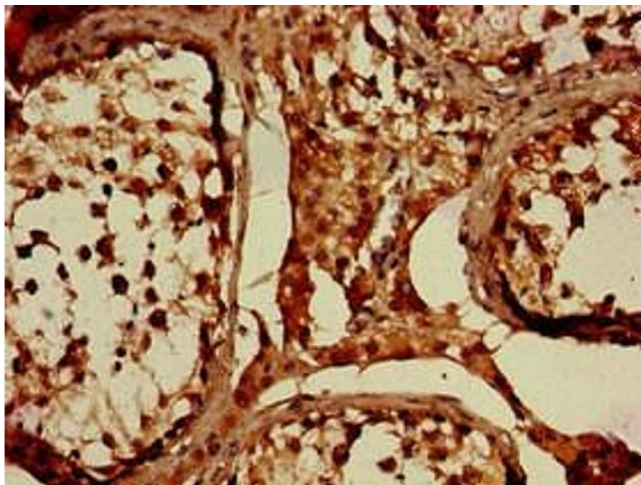
Precaution of Use: This product contains ProClin: a POISONOUS AND HAZARDOUS SUBSTANCE which should be handled by trained staff only.

Storage: -20 °C,-80 °C

## Handling

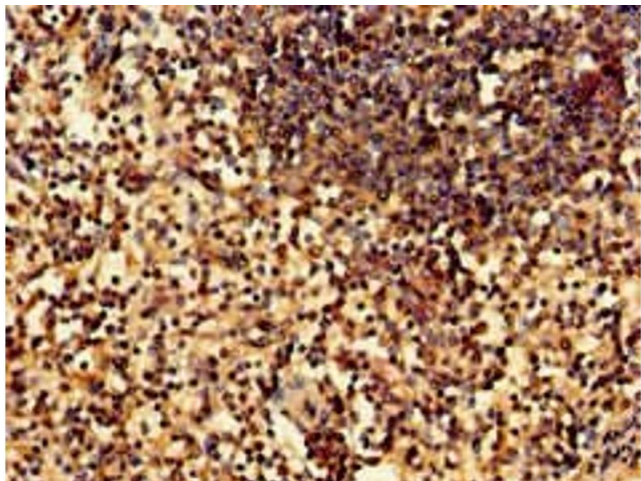
Storage Comment: Upon receipt, store at -20°C or -80°C. Avoid repeated freeze.

## Images



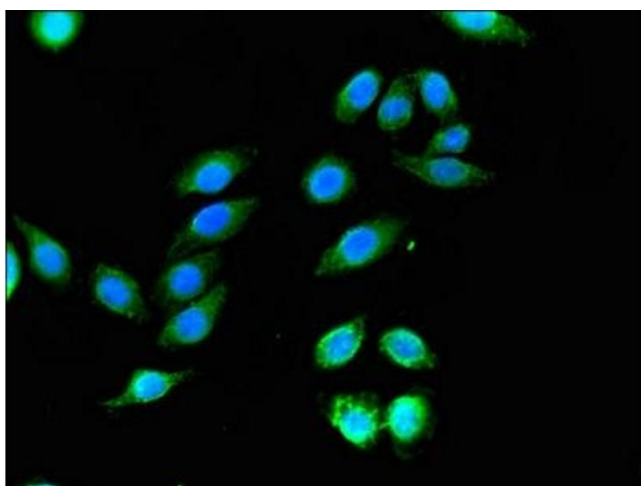
### Immunohistochemistry

**Image 1.** Immunohistochemistry of paraffin-embedded human testis tissue using ABIN7169222 at dilution of 1:100



### Immunohistochemistry

**Image 2.** Immunohistochemistry of paraffin-embedded human spleen tissue using ABIN7169222 at dilution of 1:100



### Immunofluorescence

**Image 3.** Immunofluorescent analysis of A549 cells using ABIN7169222 at dilution of 1:100 and Alexa Fluor 488-conjugated AffiniPure Goat Anti-Rabbit IgG(H+L)