

Datasheet for ABIN7169246

anti-PPP2R2B antibody (Regulatory Subunit B)**3** Images[Go to Product page](#)

Overview

Quantity:	100 µg
Target:	PPP2R2B
Binding Specificity:	AA 1-200, Regulatory Subunit B
Reactivity:	Human
Host:	Rabbit
Clonality:	Polyclonal
Conjugate:	This PPP2R2B antibody is un-conjugated
Application:	ELISA, Immunofluorescence (IF), Immunohistochemistry (IHC)

Product Details

Immunogen:	Recombinant Human Serine/threonine-protein phosphatase 2A 55 kDa regulatory subunit B beta isoform protein (1-200AA)
Isotype:	IgG
Cross-Reactivity:	Human
Purification:	>95%, Protein G purified

Target Details

Target:	PPP2R2B
Alternative Name:	PPP2R2B (PPP2R2B Products)
Background:	Background: The B regulatory subunit might modulate substrate selectivity and catalytic

Target Details

activity, and also might direct the localization of the catalytic enzyme to a particular subcellular compartment. Within the PP2A holoenzyme complex, isoform 2 is required to promote proapoptotic activity (By similarity). Isoform 2 regulates neuronal survival through the mitochondrial fission and fusion balance (By similarity).

Aliases: 2ABB_HUMAN antibody, B55 beta antibody, Beta isoform of regulatory subunit B55 protein phosphatase 2 antibody, MGC24888 antibody, PP2A B55beta antibody, PP2A PR55B antibody, PP2A subunit B B beta isoform antibody, PP2A subunit B B55 beta isoform antibody, PP2A subunit B isoform B55 beta antibody, PP2A subunit B isoform B55-beta antibody, PP2A subunit B isoform beta antibody, PP2A subunit B isoform PR55 beta antibody, PP2A subunit B isoform PR55-beta antibody, PP2A subunit B isoform R2 beta antibody, PP2A subunit B isoform R2-beta antibody, PP2A subunit B PR55 beta isoform antibody, PP2A subunit B R2 beta isoform antibody, Ppp2r2b antibody, PR2AB beta antibody, PR2AB55 beta antibody, PR2APR55 beta antibody, PR52B antibody, PR55 beta antibody, Protein phosphatase 2 (formerly 2A) regulatory subunit B (PR 52) beta isoform antibody, Protein phosphatase 2 (formerly 2A) regulatory subunit B beta isoform antibody, Protein phosphatase 2 regulatory subunit B antibody, Protein phosphatase 2 regulatory subunit B beta isoform antibody, SCA 12 antibody, SCA12 antibody, Serine/threonine protein phosphatase 2A 55 kDa regulatory subunit B beta isoform antibody, Serine/threonine protein phosphatase 2A neuronal isoform antibody, Serine/threonine-protein phosphatase 2A 55 kDa regulatory subunit B beta isoform antibody

UniProt: [Q00005](#)

Pathways: [PI3K-Akt Signaling](#), [Mitotic G1-G1/S Phases](#), [Hepatitis C](#)

Application Details

Application Notes: Recommended dilution: IHC:1:500-1:1000, IF:1:200-1:500,

Restrictions: For Research Use only

Handling

Format: Liquid

Buffer: Preservative: 0.03 % Proclin 300
Constituents: 50 % Glycerol, 0.01M PBS, PH 7.4

Preservative: ProClin

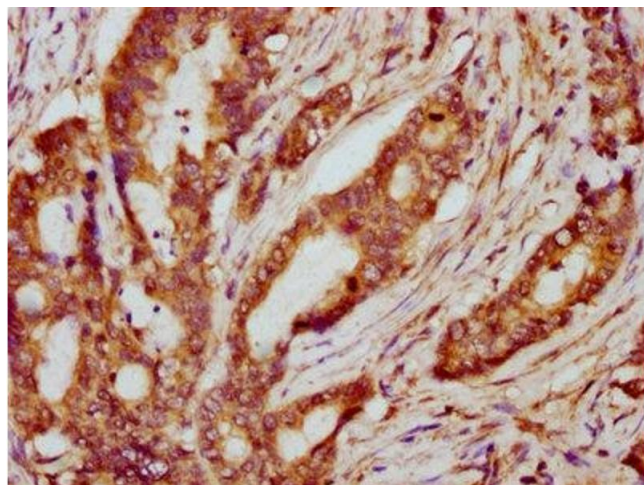
Precaution of Use: This product contains ProClin: a POISONOUS AND HAZARDOUS SUBSTANCE which should be handled by trained staff only.

Handling

Storage: -20 °C, -80 °C

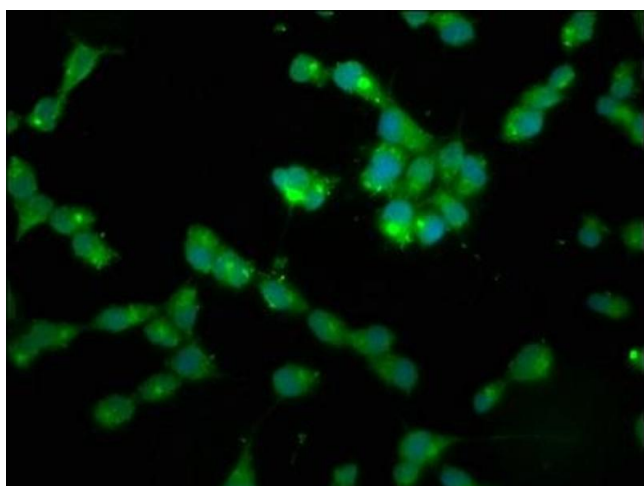
Storage Comment: Upon receipt, store at -20°C or -80°C. Avoid repeated freeze.

Images



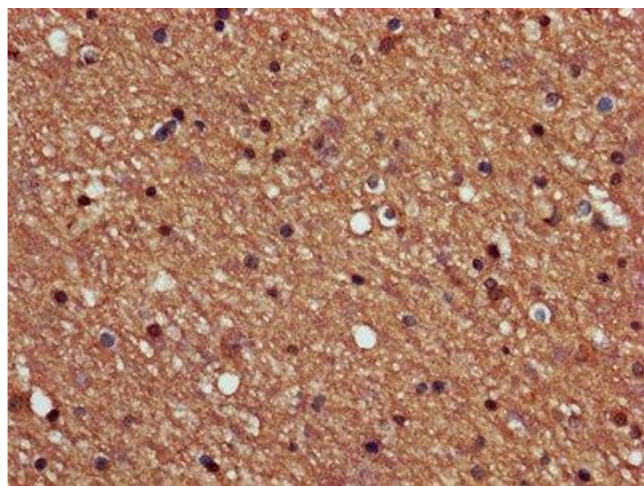
Immunohistochemistry

Image 1. IHC image of ABIN7169246 diluted at 1:600 and staining in paraffin-embedded human colon cancer performed on a Leica Bond™ system. After dewaxing and hydration, antigen retrieval was mediated by high pressure in a citrate buffer (pH 6.0). Section was blocked with 10% normal goat serum 30min at RT. Then primary antibody (1% BSA) was incubated at 4°C overnight. The primary is detected by a biotinylated secondary antibody and visualized using an HRP conjugated SP system.



Immunofluorescence

Image 2. Immunofluorescence staining of SH-SY5Y cells with ABIN7169246 at 1:200, counter-stained with DAPI. The cells were fixed in 4% formaldehyde, permeabilized using 0.2% Triton X-100 and blocked in 10% normal Goat Serum. The cells were then incubated with the antibody overnight at 4°C. The secondary antibody was Alexa Fluor 488-conjugated AffiniPure Goat Anti-Rabbit IgG(H+L).



Immunohistochemistry

Image 3. IHC image of ABIN7169246 diluted at 1:600 and staining in paraffin-embedded human brain tissue performed on a Leica Bond™ system. After dewaxing and hydration, antigen retrieval was mediated by high pressure in a citrate buffer (pH 6.0). Section was blocked with 10% normal goat serum 30min at RT. Then primary antibody (1% BSA) was incubated at 4°C overnight. The primary is detected by a biotinylated secondary antibody and

visualized using an HRP conjugated SP system.