



Datasheet for ABIN7169250
anti-PPP2R2D antibody (Regulatory Subunit B)



[Go to Product page](#)

4 Images

Overview

Quantity:	100 µg
Target:	PPP2R2D
Binding Specificity:	AA 1-192, Regulatory Subunit B
Reactivity:	Human
Host:	Rabbit
Clonality:	Polyclonal
Conjugate:	This PPP2R2D antibody is un-conjugated
Application:	ELISA, Western Blotting (WB), Immunohistochemistry (IHC), Immunofluorescence (IF)

Product Details

Immunogen:	Recombinant Human Serine/threonine-protein phosphatase 2A 55 kDa regulatory subunit B delta isoform protein (1-192AA)
Isotype:	IgG
Cross-Reactivity:	Human
Purification:	>95%, Protein G purified

Target Details

Target:	PPP2R2D
Alternative Name:	PPP2R2D (PPP2R2D Products)
Background:	Background: B regulatory subunit of protein phosphatase 2A (PP2A) that plays a key role in cell

Target Details

cycle by controlling mitosis entry and exit. The activity of PP2A complexes containing PPP2R2D (PR55-delta) fluctuate during the cell cycle: the activity is high in interphase and low in mitosis. During mitosis, activity of PP2A is inhibited via interaction with phosphorylated ENSA and ARPP19 inhibitors. Within the PP2A complexes, the B regulatory subunits modulate substrate selectivity and catalytic activity, and also may direct the localization of the catalytic enzyme to a particular subcellular compartment (By similarity).

Aliases: 2ABD_HUMAN antibody, MDS026 antibody, PP2A subunit B isoform B55-delta antibody, PP2A subunit B isoform delta antibody, PP2A subunit B isoform PR55-delta antibody, PP2A subunit B isoform R2-delta antibody, PPP2R2D antibody, Protein phosphatase 2 regulatory subunit B delta antibody, Protein phosphatase 2 regulatory subunit B delta isoform antibody, Serine/threonine-protein phosphatase 2A 55 kDa regulatory subunit B delta isoform antibody

UniProt: [Q66LE6](#)

Application Details

Application Notes: Recommended dilution: WB:1:1000-1:5000, IHC:1:20-1:200, IF:1:50-1:200,

Restrictions: For Research Use only

Handling

Format: Liquid

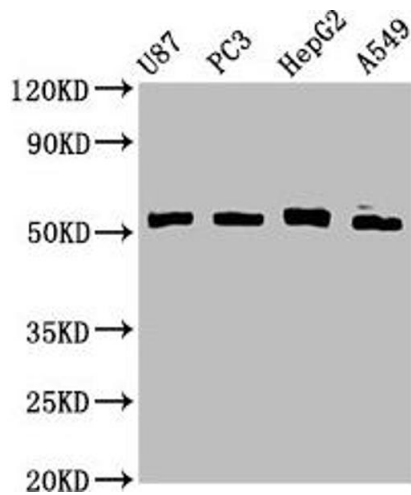
Buffer: Preservative: 0.03 % Proclin 300
Constituents: 50 % Glycerol, 0.01M PBS, PH 7.4

Preservative: ProClin

Precaution of Use: This product contains ProClin: a POISONOUS AND HAZARDOUS SUBSTANCE which should be handled by trained staff only.

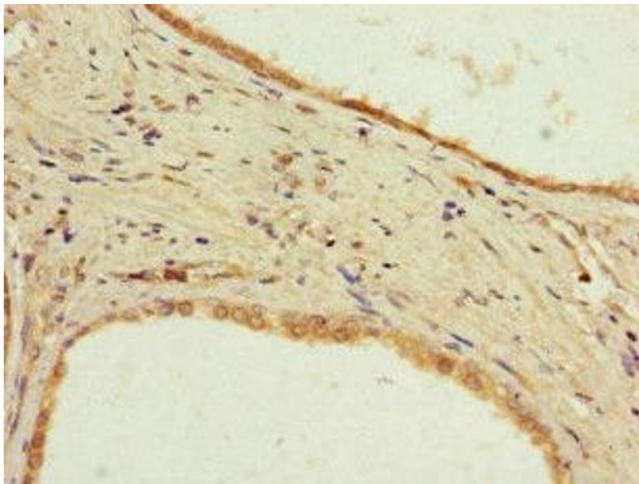
Storage: -20 °C,-80 °C

Storage Comment: Upon receipt, store at -20°C or -80°C. Avoid repeated freeze.



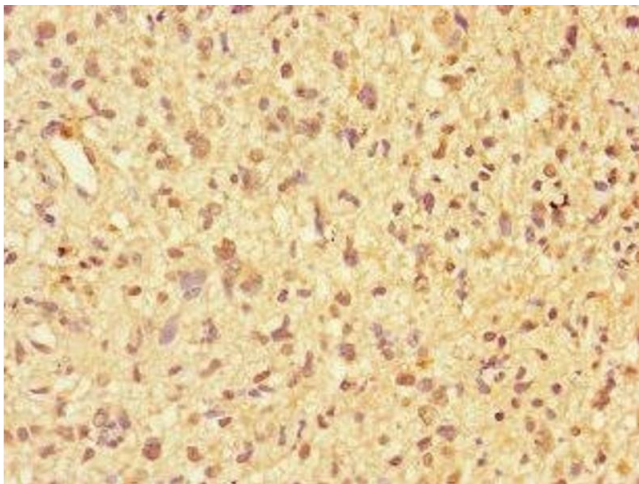
Western Blotting

Image 1. Western Blot Positive WB detected in: U87 whole cell lysate, PC-3 whole cell lysate, HepG2 whole cell lysate, A549 whole cell lysate All lanes: PPP2R2D antibody at 3.3 μ g/mL Secondary Goat polyclonal to rabbit IgG at 1/50000 dilution Predicted band size: 53 kDa Observed band size: 53 kDa



Immunohistochemistry

Image 2. Immunohistochemistry of paraffin-embedded human prostate cancer using ABIN7169250 at dilution of 1:100



Immunohistochemistry

Image 3. Immunohistochemistry of paraffin-embedded human glioma using ABIN7169250 at dilution of 1:100

Please check the [product details page](#) for more images. Overall 4 images are available for ABIN7169250.