

Datasheet for ABIN7169260

anti-PPP2R1B antibody (Regulatory Subunit A)[Go to Product page](#)

4 Images

Overview

Quantity:	100 µL
Target:	PPP2R1B
Binding Specificity:	AA 402-601, Regulatory Subunit A
Reactivity:	Human
Host:	Rabbit
Clonality:	Polyclonal
Conjugate:	This PPP2R1B antibody is un-conjugated
Application:	Western Blotting (WB), Immunohistochemistry (IHC), ELISA

Product Details

Immunogen:	Recombinant Human Serine/threonine-protein phosphatase 2A 65 kDa regulatory subunit A beta isoform protein (402-601AA)
Isotype:	IgG
Cross-Reactivity:	Human
Purification:	Antigen Affinity Purified

Target Details

Target:	PPP2R1B
Alternative Name:	PPP2R1B (PPP2R1B Products)
Background:	Background: The PR65 subunit of protein phosphatase 2A serves as a scaffolding molecule to

Target Details

coordinate the assembly of the catalytic subunit and a variable regulatory B subunit.

Aliases: 2AAB_HUMAN antibody, beta isoform of regulatory subunit A, protein phosphatase 2 antibody, PP2A A beta antibody, PP2A subunit A isoform PR65-beta antibody, PP2A subunit A isoform R1-beta antibody, PP2A, subunit A, PR65 beta isoform antibody, PP2A, subunit A, R1 beta isoform antibody, PPP2R1B antibody, PPP4R1 antibody, PR65B antibody, protein phosphatase 2 (formerly 2A), regulatory subunit A (PR 65), beta isoform antibody, protein phosphatase 2 (formerly 2A), regulatory subunit A, beta isoform antibody, Protein phosphatase 2, regulatory subunit A, beta antibody, Protein phosphatase 2, structural/regulatory subunit A, beta antibody, protein phosphatase 2, structural/regulatory subunit A, beta isoform antibody, serine/threonine protein phosphatase 2A 65 kDa regulatory subunit A, beta isoform antibody, serine/threonine protein phosphatase 2A, 65 kDa regulatory subunit A, beta isoform antibody, Serine/threonine-protein phosphatase 2A 65 kDa regulatory subunit A beta isoform antibody

UniProt: [P30154](#)

Pathways: [PI3K-Akt Signaling](#), [Mitotic G1-G1/S Phases](#), [Hepatitis C](#), [Toll-Like Receptors Cascades](#)

Application Details

Application Notes: Recommended dilution: WB:1:1000-1:5000, IHC:1:100-1:500,

Restrictions: For Research Use only

Handling

Format: Liquid

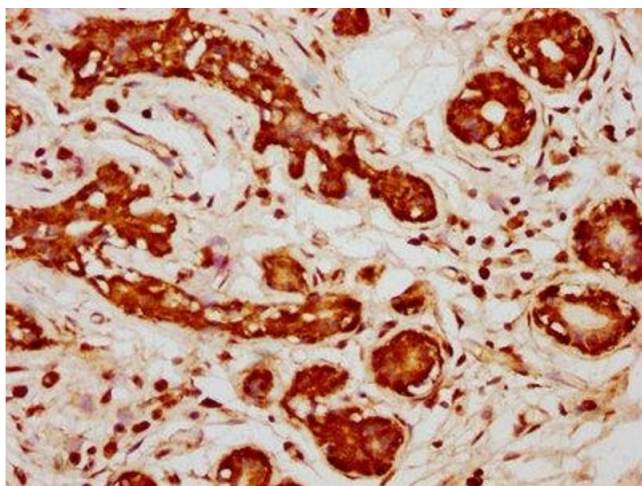
Buffer: PBS with 0.02 % sodium azide, 50 % glycerol, pH 7.3.

Preservative: Sodium azide

Precaution of Use: This product contains Sodium azide: a POISONOUS AND HAZARDOUS SUBSTANCE which should be handled by trained staff only.

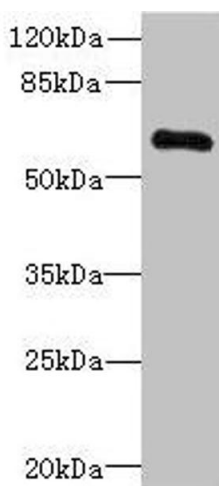
Storage: -20 °C, -80 °C

Storage Comment: Upon receipt, store at -20°C or -80°C. Avoid repeated freeze.



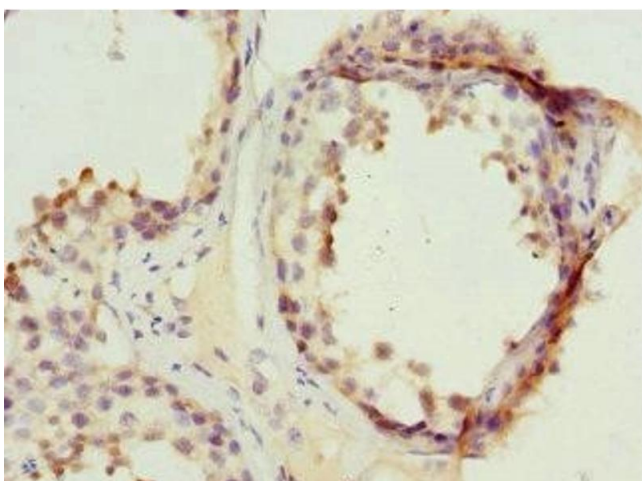
Immunohistochemistry

Image 1. IHC image of ABIN7169260 diluted at 1:333 and staining in paraffin-embedded human breast cancer performed on a Leica Bond™ system. After dewaxing and hydration, antigen retrieval was mediated by high pressure in a citrate buffer (pH 6.0). Section was blocked with 10% normal goat serum 30min at RT. Then primary antibody (1% BSA) was incubated at 4°C overnight. The primary is detected by a biotinylated secondary antibody and visualized using an HRP conjugated SP system.



Western Blotting

Image 2. Western blot All lanes: PPP2R1B antibody at 3.33 µg/mL + Jurkat whole cell lysate Secondary Goat polyclonal to rabbit IgG at 1/10000 dilution Predicted band size: 67, 74, 62, 53 kDa Observed band size: 67 kDa



Immunohistochemistry

Image 3. Immunohistochemistry of paraffin-embedded human testis tissue using ABIN7169260 at dilution of 1:100

Please check the [product details page](#) for more images. Overall 4 images are available for ABIN7169260.