



[Go to Product page](#)

Datasheet for ABIN7169262  
**anti-PPP2R4 antibody (AA 1-250)**

4 Images

Overview

Quantity:	100 µg
Target:	PPP2R4
Binding Specificity:	AA 1-250
Reactivity:	Human
Host:	Rabbit
Clonality:	Polyclonal
Conjugate:	This PPP2R4 antibody is un-conjugated
Application:	Western Blotting (WB), Immunohistochemistry (IHC), ELISA, Immunofluorescence (IF)

Product Details

Immunogen:	Recombinant Human Serine/threonine-protein phosphatase 2A activator protein (1-250AA)
Isotype:	IgG
Cross-Reactivity:	Human
Purification:	>95%, Protein G purified

Target Details

Target:	PPP2R4
Alternative Name:	PTPA ( <a href="#">PPP2R4 Products</a> )
Background:	Background: PPIases accelerate the folding of proteins. It catalyzes the cis-trans isomerization of proline imidic peptide bonds in oligopeptides. Acts as a regulatory subunit for

## Target Details

---

serine/threonine-protein phosphatase 2A (PP2A) modulating its activity or substrate specificity, probably by inducing a conformational change in the catalytic subunit, a proposed direct target of the PPlase. Can reactivate inactive phosphatase PP2A-phosphatase methylesterase complexes (PP2A(i)) in presence of ATP and Mg(2+) (By similarity). Reversibly stimulates the variable phosphotyrosyl phosphatase activity of PP2A core heterodimer PP2A(D) in presence of ATP and Mg(2+) (in vitro). The phosphotyrosyl phosphatase activity is dependent of an ATPase activity of the PP2A(D):PPP2R4 complex. Is involved in apoptosis, the function appears to be independent from PP2A.

Aliases: subunit B" antibody, KIAA0044 antibody, MGC2184 antibody, Phosphotyrosyl phosphatase activator antibody, PP2A antibody, PP2A phosphatase activator antibody, PP2A subunit B' antibody, PP2A subunit B' isoform PR53 antibody, PP2A subunit B' PR53 isoform antibody, PPP2R4 antibody, PR53 antibody, PR53 isoform antibody, Protein phosphatase 2, regulatory subunit B-prime antibody, Protein phosphatase 2A activator regulatory subunit 4 antibody, Protein phosphatase 2A regulatory subunit B' (PR 53) antibody, PTPA antibody, PTPA\_HUMAN antibody, Serine/threonine protein phosphatase 2A regulatory subunit B' antibody, Serine/threonine-protein phosphatase 2A activator antibody, Serine/threonine-protein phosphatase 2A regulatory subunit 4 antibody, Serine/threonine-protein phosphatase 2A regulatory subunit B" antibody

---

UniProt: [Q15257](#)

---

Pathways: [PI3K-Akt Signaling](#), [M Phase](#), [Hepatitis C](#), [Toll-Like Receptors Cascades](#)

## Application Details

---

Application Notes: Recommended dilution: WB:1:500-1:5000, IHC:1:1000-1:2000, IF:1:200-1:500,

---

Restrictions: For Research Use only

## Handling

---

Format: Liquid

---

Buffer: Preservative: 0.03 % Proclin 300  
Constituents: 50 % Glycerol, 0.01M PBS, PH 7.4

---

Preservative: ProClin

---

Precaution of Use: This product contains ProClin: a POISONOUS AND HAZARDOUS SUBSTANCE which should be handled by trained staff only.

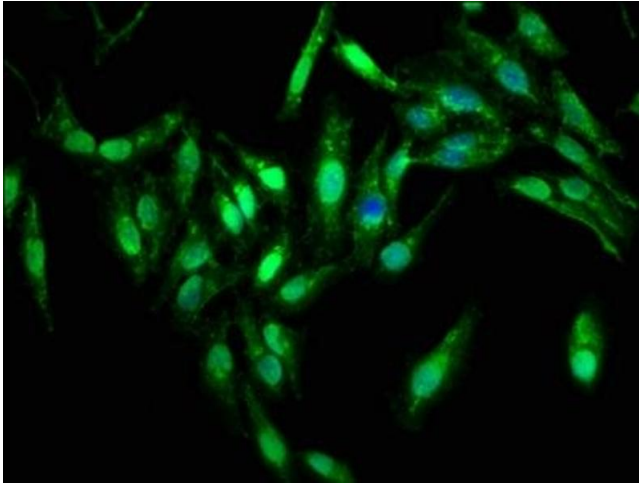
---

## Handling

Storage: -20 °C,-80 °C

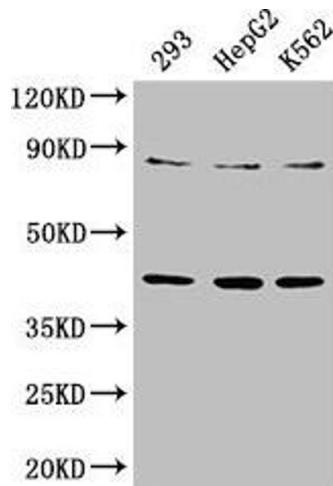
Storage Comment: Upon receipt, store at -20°C or -80°C. Avoid repeated freeze.

## Images



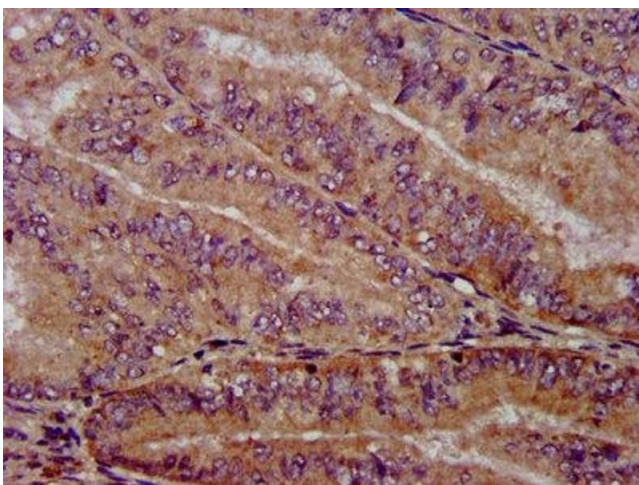
### Immunofluorescence

**Image 1.** Immunofluorescence staining of HeLa cells with ABIN7169262 at 1:333, counter-stained with DAPI. The cells were fixed in 4% formaldehyde, permeabilized using 0.2% Triton X-100 and blocked in 10% normal Goat Serum. The cells were then incubated with the antibody overnight at 4°C. The secondary antibody was Alexa Fluor 488-conjugated AffiniPure Goat Anti-Rabbit IgG(H+L).



### Western Blotting

**Image 2.** Western Blot Positive WB detected in: 293 whole cell lysate, HepG2 whole cell lysate, K562 whole cell lysate. All lanes: PTPA antibody at 3.3 µg/mL. Secondary Goat polyclonal to rabbit IgG at 1/50000 dilution. Predicted band size: 41, 37, 34, 32 kDa. Observed band size: 41 kDa.



### Immunohistochemistry

**Image 3.** IHC image of ABIN7169262 diluted at 1:1000 and staining in paraffin-embedded human endometrial cancer performed on a Leica Bond™ system. After dewaxing and hydration, antigen retrieval was mediated by high pressure in a citrate buffer (pH 6.0). Section was blocked with 10% normal goat serum 30min at RT. Then primary antibody (1% BSA) was incubated at 4°C overnight. The primary is detected by a biotinylated secondary antibody and visualized using an HRP conjugated SP system.

## Images

---

Please check the [product details page](#) for more images. Overall 4 images are available for ABIN7169262.