

Datasheet for ABIN7169270

anti-PPP2CB antibody (Catalytic Subunit beta)[Go to Product page](#)

6 Images

Overview

Quantity:	100 µg
Target:	PPP2CB
Binding Specificity:	AA 1-309, Catalytic Subunit beta
Reactivity:	Human
Host:	Rabbit
Clonality:	Polyclonal
Conjugate:	This PPP2CB antibody is un-conjugated
Application:	Western Blotting (WB), ELISA, Immunohistochemistry (IHC), Immunofluorescence (IF)

Product Details

Immunogen:	Recombinant Human Serine/threonine-protein phosphatase 2A catalytic subunit beta isoform protein (1-309AA)
Isotype:	IgG
Cross-Reactivity:	Human
Purification:	>95%, Protein G purified

Target Details

Target:	PPP2CB
Alternative Name:	PPP2CB (PPP2CB Products)
Background:	Background: PP2A can modulate the activity of phosphorylase B kinase casein kinase 2,

Target Details

mitogen-stimulated S6 kinase, and MAP-2 kinase.

Aliases: PP2A beta antibody, PP2A-beta antibody, PP2AB_HUMAN antibody, PP2Abeta antibody, PP2CB antibody, Ppp2cb antibody, Protein phosphatase 2 (formerly 2A), catalytic subunit, beta isoform antibody, Protein phosphatase 2 catalytic subunit beta isozyme antibody, Protein phosphatase 2, catalytic subunit, beta isoform antibody, Protein phosphatase 2A catalytic subunit beta isoform antibody, Protein phosphatase type 2A catalytic subunit antibody, Serine/threonine protein phosphatase 2A catalytic subunit beta antibody, Serine/threonine-protein phosphatase 2A catalytic subunit beta isoform antibody

UniProt: [P62714](#)

Pathways: [Mitotic G1-G1/S Phases](#), [Hepatitis C](#), [Toll-Like Receptors Cascades](#)

Application Details

Application Notes: Recommended dilution: WB:1:500-1:2000, IHC:1:100-1:500, IF:1:50-1:200,

Restrictions: For Research Use only

Handling

Format: Liquid

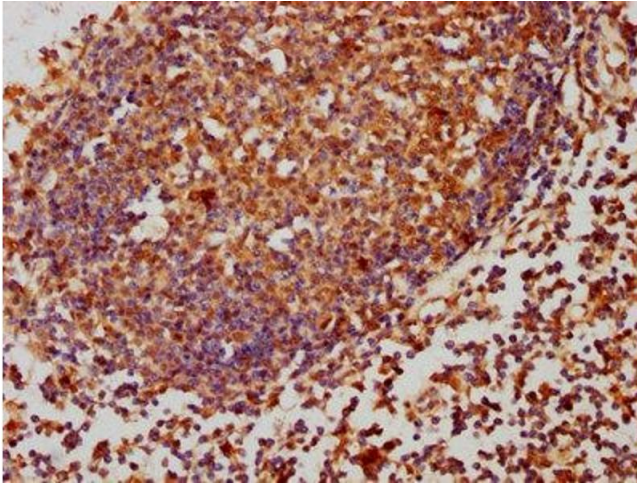
Buffer: Preservative: 0.03 % Proclin 300
Constituents: 50 % Glycerol, 0.01M PBS, PH 7.4

Preservative: ProClin

Precaution of Use: This product contains ProClin: a POISONOUS AND HAZARDOUS SUBSTANCE which should be handled by trained staff only.

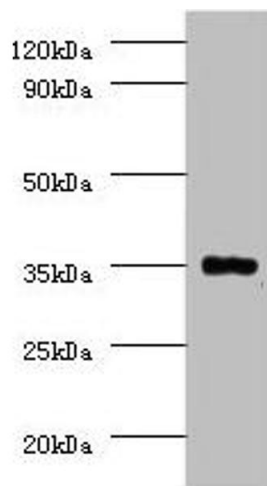
Storage: -20 °C, -80 °C

Storage Comment: Upon receipt, store at -20°C or -80°C. Avoid repeated freeze.



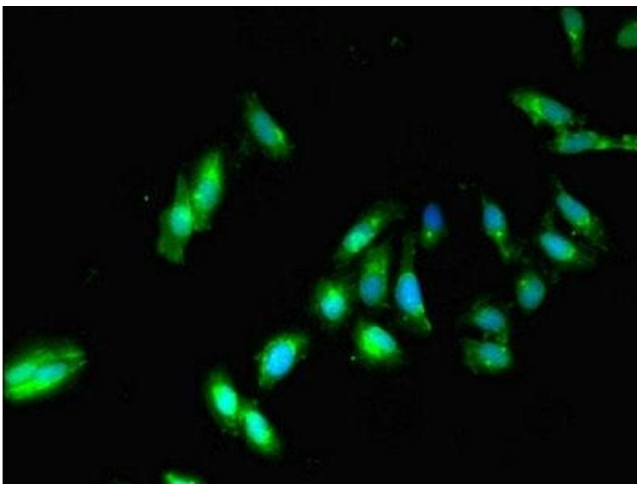
Immunohistochemistry

Image 1. IHC image of ABIN7169270 diluted at 1:260 and staining in paraffin-embedded human lymph node tissue performed on a Leica Bond™ system. After dewaxing and hydration, antigen retrieval was mediated by high pressure in a citrate buffer (pH 6.0). Section was blocked with 10% normal goat serum 30min at RT. Then primary antibody (1% BSA) was incubated at 4°C overnight. The primary is detected by a biotinylated secondary antibody and visualized using an HRP conjugated SP system.



Western Blotting

Image 2. Western blot All lanes: Serine/threonine-protein phosphatase 2A catalytic subunit beta isoform Antibody at 2 µg/mL + EC109 whole cell lysate Secondary Goat polyclonal to rabbit IgG at 1/15000 dilution Predicted band size: 34 kDa Observed band size: 34 kDa



Immunofluorescence

Image 3. Immunofluorescent analysis of HeLa cells using ABIN7169270 at dilution of 1:100 and Alexa Fluor 488-conjugated AffiniPure Goat Anti-Rabbit IgG(H+L)

Please check the [product details page](#) for more images. Overall 6 images are available for ABIN7169270.