

Datasheet for ABIN7169288
anti-PP5 antibody (AA 370-488)

4 Images

[Go to Product page](#)

Overview

Quantity:	100 µL
Target:	PP5 (PPP5C)
Binding Specificity:	AA 370-488
Reactivity:	Human
Host:	Rabbit
Clonality:	Polyclonal
Conjugate:	This PP5 antibody is un-conjugated
Application:	Western Blotting (WB), Immunohistochemistry (IHC), Immunofluorescence (IF), ELISA

Product Details

Immunogen:	Recombinant Human Serine/threonine-protein phosphatase 5 protein (370-488AA)
Isotype:	IgG
Cross-Reactivity:	Human, Mouse
Purification:	>95%, Protein G purified

Target Details

Target:	PP5 (PPP5C)
Alternative Name:	PPP5C (PPP5C Products)
Background:	Background: Serine/threonine-protein phosphatase that dephosphorylates a myriad of proteins involved in different signaling pathways including the kinases CSNK1E, ASK1/MAP3K5, PRKDC

Target Details

and RAF1, the nuclear receptors NR3C1, PPARG, ESR1 and ESR2, SMAD proteins and TAU/MAPT. Implicated in wide ranging cellular processes, including apoptosis, differentiation, DNA damage response, cell survival, regulation of ion channels or circadian rhythms, in response to steroid and thyroid hormones, calcium, fatty acids, TGF-beta as well as oxidative and genotoxic stresses. Participates in the control of DNA damage response mechanisms such as checkpoint activation and DNA damage repair through, for instance, the regulation ATM/ATR-signaling and dephosphorylation of PRKDC and TP53BP1. Inhibits ASK1/MAP3K5-mediated apoptosis induced by oxidative stress. Plays a positive role in adipogenesis, mainly through the dephosphorylation and activation of PPARG transactivation function. Also dephosphorylates and inhibits the anti-adipogenic effect of NR3C1. Regulates the circadian rhythms, through the dephosphorylation and activation of CSNK1E. May modulate TGF-beta signaling pathway by the regulation of SMAD3 phosphorylation and protein expression levels. Dephosphorylates and may play a role in the regulation of TAU/MAPT. Through their dephosphorylation, may play a role in the regulation of ions channels such as KCNH2. Aliases: FLJ36922 antibody, FLJ55954 antibody, OTTHUMP00000165834 antibody, PP-T antibody, PP5 antibody, PPP5 antibody, PPP5_HUMAN antibody, Ppp5c antibody, PPT antibody, Protein phosphatase 5, catalytic subunit antibody, Protein phosphatase T antibody, Serine/threonine protein phosphatase 5 antibody, Serine/threonine-protein phosphatase 5 antibody

UniProt: [P53041](#)

Application Details

Application Notes: Recommended dilution: WB:1:500-1:2000, IHC:1:200-1:500, IF:1:50-1:200,

Restrictions: For Research Use only

Handling

Format: Liquid

Buffer: Preservative: 0.03 % Proclin 300
Constituents: 50 % Glycerol, 0.01M PBS, pH 7.4

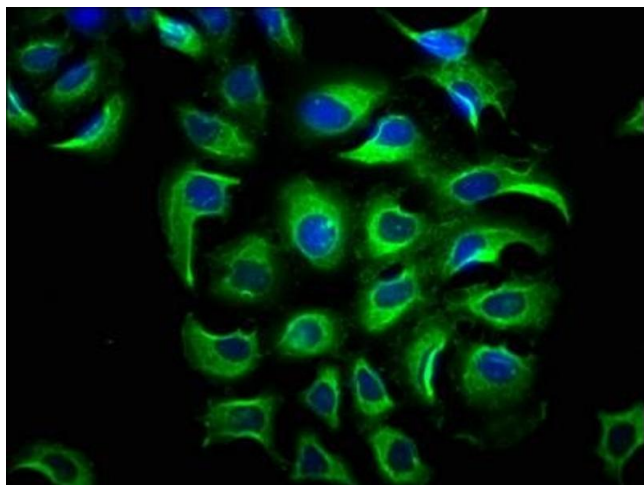
Preservative: ProClin

Precaution of Use: This product contains ProClin: a POISONOUS AND HAZARDOUS SUBSTANCE which should be handled by trained staff only.

Storage: -20 °C,-80 °C

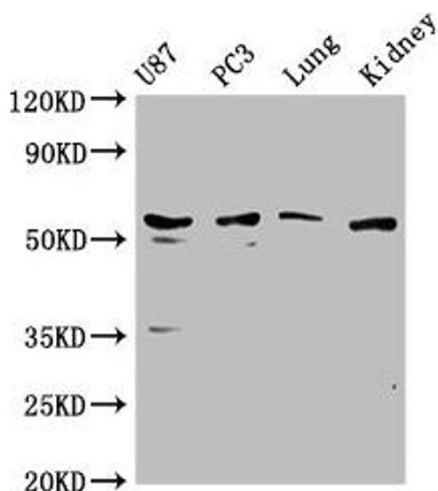
Storage Comment: Upon receipt, store at -20°C or -80°C. Avoid repeated freeze.

Images



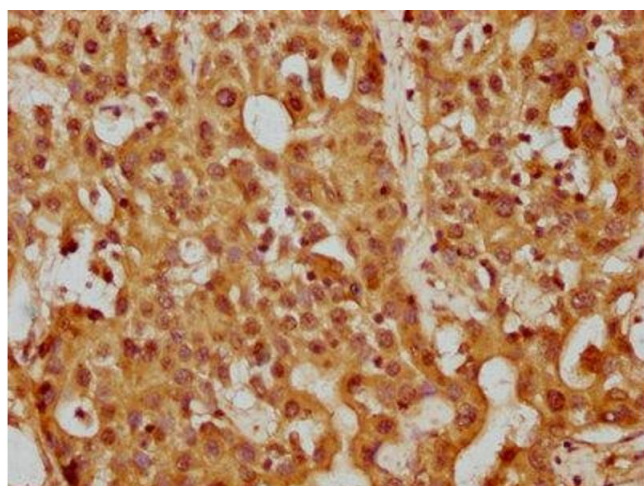
Immunofluorescence

Image 1. Immunofluorescence staining of A549 cells with ABIN7169288 at 1:66, counter-stained with DAPI. The cells were fixed in 4 % formaldehyde, permeabilized using 0.2 % Triton X-100 and blocked in 10 % normal Goat Serum. The cells were then incubated with the antibody overnight at 4 °C. The secondary antibody was Alexa Fluor 488-conjugated AffiniPure Goat Anti-Rabbit IgG(H+L).



Western Blotting

Image 2. Western Blot Positive WB detected in: U87 whole cell lysate, PC3 whole cell lysate, Mouse lung tissue, Mouse kidney tissue. All lanes: PPP5C antibody at 1:1000. Secondary Goat polyclonal to rabbit IgG at 1/50000 dilution. Predicted band size: 57 kDa. Observed band size: 57 kDa.



Immunohistochemistry

Image 3. IHC image of ABIN7169288 diluted at 1:200 and staining in paraffin-embedded human liver cancer performed on a Leica BondTM system. After dewaxing and hydration, antigen retrieval was mediated by high pressure in a citrate buffer (pH 6.0). Section was blocked with 10 % normal goat serum 30 min at RT. Then primary antibody (1 % BSA) was incubated at 4 °C overnight. The primary is detected by a biotinylated secondary antibody and visualized using an HRP conjugated SP system.

Please check the [product details page](#) for more images. Overall 4 images are available for ABIN7169288.