

Datasheet for ABIN7169296  
**anti-Cpped1 antibody (AA 49-186)**[Go to Product page](#)

## 1 Image

## Overview

Quantity:	100 µg
Target:	Cpped1
Binding Specificity:	AA 49-186
Reactivity:	Human
Host:	Rabbit
Clonality:	Polyclonal
Conjugate:	This Cpped1 antibody is un-conjugated
Application:	ELISA, Immunohistochemistry (IHC)

## Product Details

Immunogen:	Recombinant Human Serine/threonine-protein phosphatase CPPED1 protein (49-186AA)
Isotype:	IgG
Cross-Reactivity:	Human
Purification:	>95%, Protein G purified

## Target Details

Target:	Cpped1
Alternative Name:	CPPED1 ( <a href="#">Cpped1 Products</a> )
Background:	Background: Protein phosphatase that dephosphorylates AKT family kinase specifically at 'Ser-473', blocking cell cycle progression and promoting cell apoptosis. May play an inhibitory role

## Target Details

in glucose uptake by adipocytes.

Aliases: CPPED1 antibody, CSTP1Serine/threonine-protein phosphatase CPPED1 antibody, EC 3.1.3.16 antibody, Calcineurin-like phosphoesterase domain-containing protein 1 antibody, Complete S-transactivated protein 1 antibody

UniProt: [Q9BRF8](#)

## Application Details

Application Notes: Recommended dilution: IHC:1:200-1:500,

Restrictions: For Research Use only

## Handling

Format: Liquid

Buffer: Preservative: 0.03 % Proclin 300  
Constituents: 50 % Glycerol, 0.01M PBS, pH 7.4

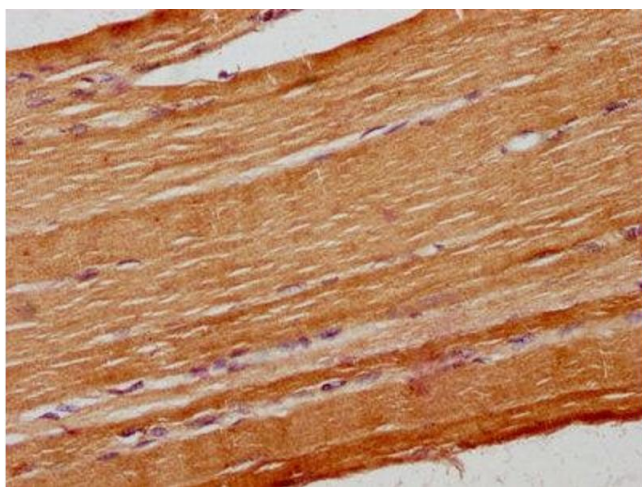
Preservative: ProClin

Precaution of Use: This product contains ProClin: a POISONOUS AND HAZARDOUS SUBSTANCE which should be handled by trained staff only.

Storage: -20 °C,-80 °C

Storage Comment: Upon receipt, store at -20°C or -80°C. Avoid repeated freeze.

## Images



### Immunohistochemistry

**Image 1.** IHC image of ABIN7169296 diluted at 1:400 and staining in paraffin-embedded human skeletal muscle tissue performed on a Leica Bond™ system. After dewaxing and hydration, antigen retrieval was mediated by high pressure in a citrate buffer (pH 6.0). Section was blocked with 10 % normal goat serum 30 min at RT. Then primary antibody (1 % BSA) was incubated at 4 °C overnight. The primary is detected by a biotinylated secondary antibody and visualized using an HRP conjugated SP system.