

Datasheet for ABIN7169300
anti-PGAM5 antibody (AA 30-223)[Go to Product page](#)

2 Images

Overview

Quantity:	100 µg
Target:	PGAM5
Binding Specificity:	AA 30-223
Reactivity:	Human
Host:	Rabbit
Clonality:	Polyclonal
Conjugate:	This PGAM5 antibody is un-conjugated
Application:	ELISA, Immunohistochemistry (IHC), Immunofluorescence (IF)

Product Details

Immunogen:	Recombinant Human Serine/threonine-protein phosphatase PGAM5, mitochondrial protein (30-223AA)
Isotype:	IgG
Cross-Reactivity:	Human
Purification:	>95%, Protein G purified

Target Details

Target:	PGAM5
Alternative Name:	PGAM5 (PGAM5 Products)
Background:	Background: Displays phosphatase activity for serine/threonine residues, and,

Target Details

dephosphorylates and activates MAP3K5 kinase. Has apparently no phosphoglycerate mutase activity. May be regulator of mitochondrial dynamics. Substrate for a KEAP1-dependent ubiquitin ligase complex. Contributes to the repression of NFE2L2-dependent gene expression. Acts as a central mediator for programmed necrosis induced by TNF, by reactive oxygen species and by calcium ionophore.

Aliases: Bcl-XL-binding protein v68 antibody, BXLbv68 antibody, MGC5352 antibody, mitochondrial antibody, PGAM5 antibody, PGAM5_HUMAN antibody, Phosphoglycerate mutase family member 5 antibody, Serine/threonine protein phosphatase PGAM5 mitochondrial antibody, Serine/threonine-protein phosphatase PGAM5 antibody

UniProt: [Q96HS1](#)

Application Details

Application Notes: Recommended dilution: IHC:1:20-1:200, IF:1:50-1:200,

Restrictions: For Research Use only

Handling

Format: Liquid

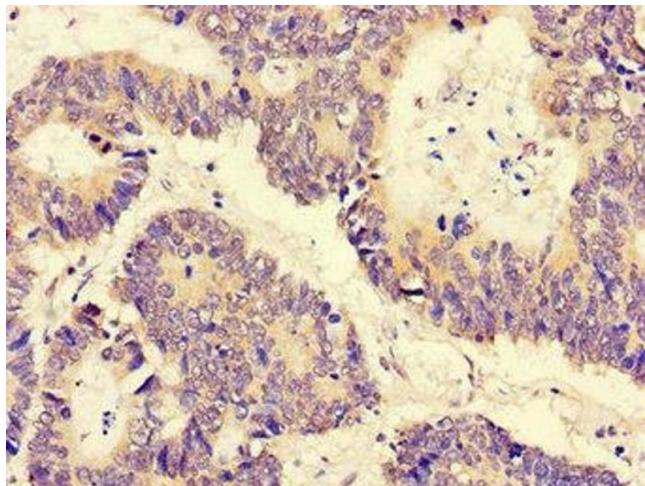
Buffer: Preservative: 0.03 % Proclin 300
Constituents: 50 % Glycerol, 0.01M PBS, PH 7.4

Preservative: ProClin

Precaution of Use: This product contains ProClin: a POISONOUS AND HAZARDOUS SUBSTANCE which should be handled by trained staff only.

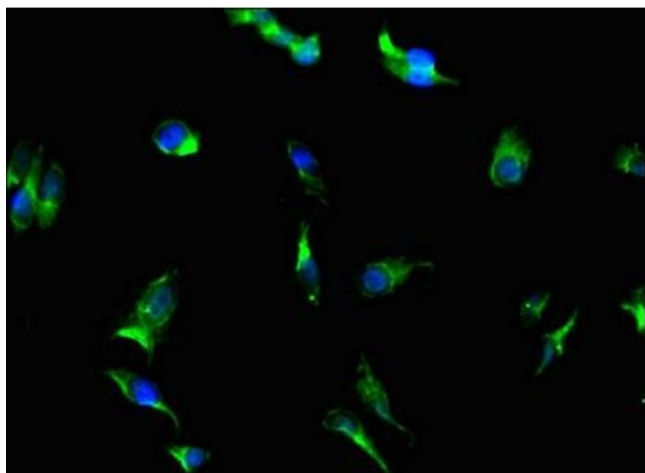
Storage: -20 °C,-80 °C

Storage Comment: Upon receipt, store at -20°C or -80°C. Avoid repeated freeze.



Immunohistochemistry

Image 1. Immunohistochemistry of paraffin-embedded human colon cancer using ABIN7169300 at dilution of 1: 100



Immunofluorescence

Image 2. Immunofluorescent analysis of Hela cells using ABIN7169300 at dilution of 1: 100 and Alexa Fluor 488-conjugated AffiniPure Goat Anti-Rabbit IgG(H+L)