

Datasheet for ABIN7169308
anti-PPP1CB antibody (Catalytic Subunit)[Go to Product page](#)

3 Images

Overview

Quantity:	100 µg
Target:	PPP1CB
Binding Specificity:	AA 175-221, Catalytic Subunit
Reactivity:	Human
Host:	Rabbit
Clonality:	Polyclonal
Conjugate:	This PPP1CB antibody is un-conjugated
Application:	Western Blotting (WB), ELISA, Immunohistochemistry (IHC)

Product Details

Immunogen:	Recombinant Human Serine/threonine-protein phosphatase PP1-beta catalytic subunit protein (175-221AA)
Isotype:	IgG
Cross-Reactivity:	Human
Purification:	>95%, Protein G purified

Target Details

Target:	PPP1CB
Alternative Name:	PPP1CB (PPP1CB Products)
Background:	Background: Protein phosphatase that associates with over 200 regulatory proteins to form

Target Details

highly specific holoenzymes which dephosphorylate hundreds of biological targets. Protein phosphatase (PP1) is essential for cell division, it participates in the regulation of glycogen metabolism, muscle contractility and protein synthesis. Involved in regulation of ionic conductances and long-term synaptic plasticity. Component of the PTW/PP1 phosphatase complex, which plays a role in the control of chromatin structure and cell cycle progression during the transition from mitosis into interphase. In balance with CSNK1D and CSNK1E, determines the circadian period length, through the regulation of the speed and rhythmicity of PER1 and PER2 phosphorylation. May dephosphorylate CSNK1D and CSNK1E.

Dephosphorylates the 'Ser-418' residue of FOXP3 in regulatory T-cells (Treg) from patients with rheumatoid arthritis, thereby inactivating FOXP3 and rendering Treg cells functionally defective (PubMed:23396208).

Aliases: MGC3672 antibody, PP 1B antibody, PP-1B antibody, PP1B antibody, PP1B_HUMAN antibody, PP1beta antibody, PPP1CB antibody, PPP1CD antibody, Protein phosphatase 1 beta antibody, Protein phosphatase 1 catalytic subunit beta isoform antibody, Protein phosphatase 1 delta antibody, Protein phosphatase 1, catalytic subunit, beta isozyme antibody, Protein phosphatase 1, catalytic subunit, delta isoform antibody, Serine threonine protein phosphatase PP1 beta catalytic subunit antibody, Serine/threonine-protein phosphatase PP1-beta catalytic subunit antibody

UniProt: [P62140](#)

Pathways: [M Phase](#), [Cellular Glucan Metabolic Process](#), [Regulation of Carbohydrate Metabolic Process](#), [Lipid Metabolism](#)

Application Details

Application Notes: Recommended dilution: WB:1:500-1:5000, IHC:1:20-1:200,

Restrictions: For Research Use only

Handling

Format: Liquid

Buffer: Preservative: 0.03 % Proclin 300
Constituents: 50 % Glycerol, 0.01M PBS, pH 7.4

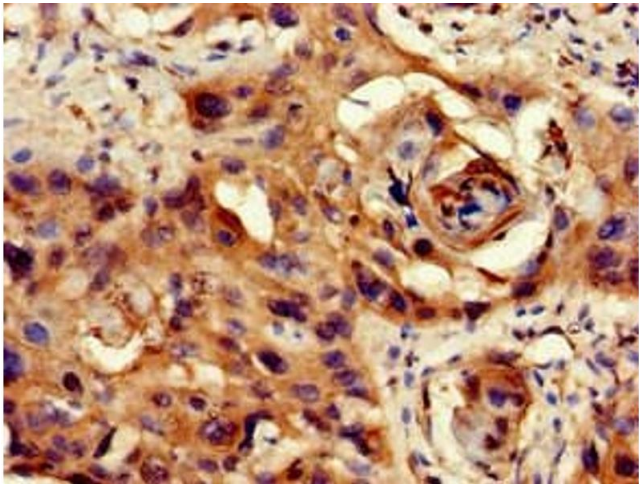
Preservative: ProClin

Precaution of Use: This product contains ProClin: a POISONOUS AND HAZARDOUS SUBSTANCE which should be handled by trained staff only.

Handling

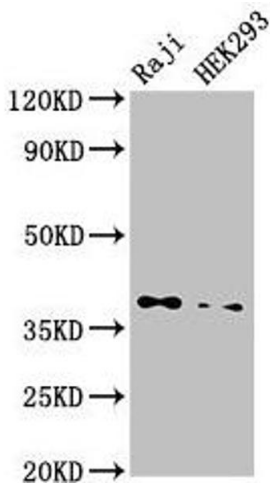
Storage:	-20 °C,-80 °C
Storage Comment:	Upon receipt, store at -20°C or -80°C. Avoid repeated freeze.

Images



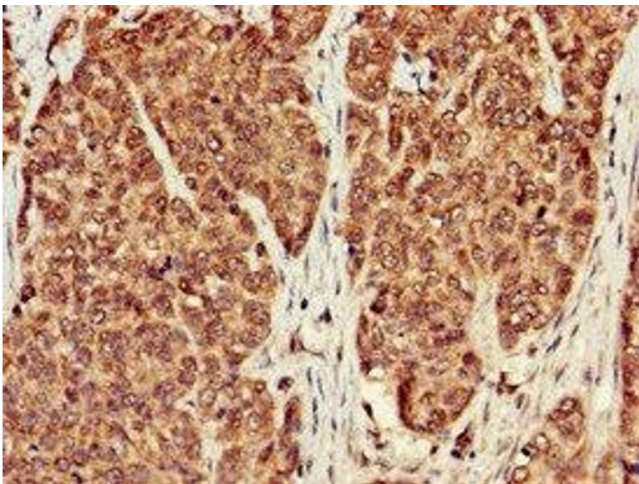
Immunohistochemistry

Image 1. Immunohistochemistry of paraffin-embedded human cervical cancer using ABIN7169308 at dilution of 1:100



Western Blotting

Image 2. Western Blot Positive WB detected in: Raji whole cell lysate, HEK293 whole cell lysate All lanes: PPP1CB antibody at 3.5 µg/mL Secondary Goat polyclonal to rabbit IgG at 1/50000 dilution Predicted band size: 38 kDa Observed band size: 38 kDa



Immunohistochemistry

Image 3. Immunohistochemistry of paraffin-embedded human ovarian cancer using ABIN7169308 at dilution of 1:100