

Datasheet for ABIN7169341
anti-SERPINB4 antibody (AA 128-208)[Go to Product page](#)

3 Images

Overview

Quantity:	100 µg
Target:	SERPINB4
Binding Specificity:	AA 128-208
Reactivity:	Human
Host:	Rabbit
Clonality:	Polyclonal
Conjugate:	This SERPINB4 antibody is un-conjugated
Application:	ELISA, Immunohistochemistry (IHC), Immunofluorescence (IF)

Product Details

Immunogen:	Recombinant Human Serpin B4 protein (128-208AA)
Isotype:	IgG
Cross-Reactivity:	Human
Purification:	>95%, Protein G purified

Target Details

Target:	SERPINB4
Alternative Name:	SERPINB4 (SERPINB4 Products)
Background:	Background: May act as a protease inhibitor to modulate the host immune response against tumor cells.

Target Details

Aliases: Leupin antibody, Peptidase inhibitor 11 antibody, PI 11 antibody, PI-11 antibody, PI11 antibody, Protease inhibitor (leucine serpin) antibody, SCCA 2 antibody, SCCA-2 antibody, SCCA1 antibody, SCCA2 antibody, SCCA2/SCCA1 fusion protein antibody, Serine (or cysteine) proteinase inhibitor, clade B (ovalbumin), member 4 antibody, Serpin B4 antibody, Serpin peptidase inhibitor, clade B (ovalbumin), member 4 antibody, SERPINB 4 antibody, SERPINB4 antibody, SPB4_HUMAN antibody, Squamous cell carcinoma antigen 1 antibody, Squamous cell carcinoma antigen 2 antibody

UniProt: [P48594](#)

Application Details

Application Notes: Recommended dilution: IHC:1:500-1:1000, IF:1:200-1:500,

Restrictions: For Research Use only

Handling

Format: Liquid

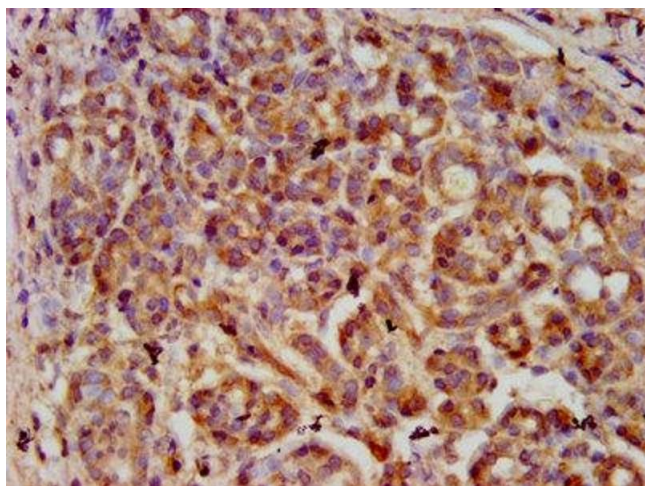
Buffer: Preservative: 0.03 % Proclin 300
Constituents: 50 % Glycerol, 0.01M PBS, pH 7.4

Preservative: ProClin

Precaution of Use: This product contains ProClin: a POISONOUS AND HAZARDOUS SUBSTANCE which should be handled by trained staff only.

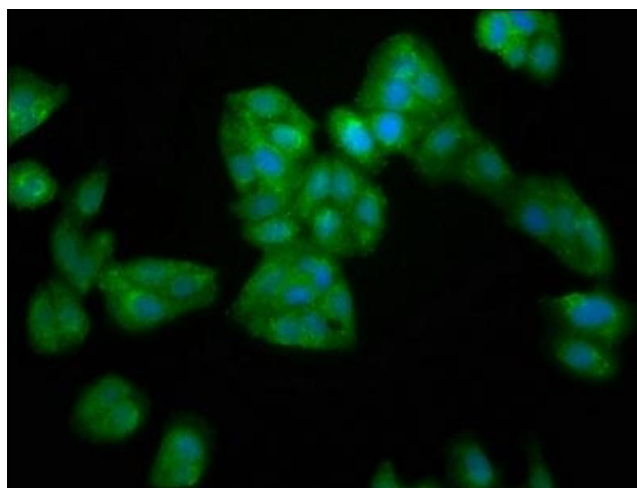
Storage: -20 °C,-80 °C

Storage Comment: Upon receipt, store at -20°C or -80°C. Avoid repeated freeze.



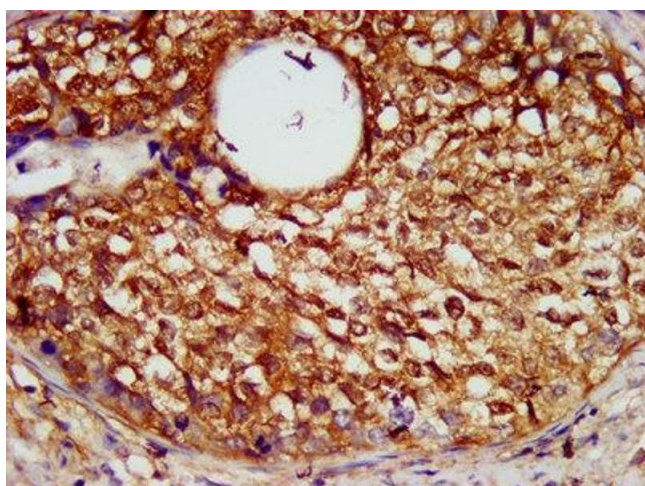
Immunohistochemistry

Image 1. IHC image of ABIN7169341 diluted at 1:600 and staining in paraffin-embedded human pancreatic cancer performed on a Leica Bond™ system. After dewaxing and hydration, antigen retrieval was mediated by high pressure in a citrate buffer (pH 6.0). Section was blocked with 10% normal goat serum 30min at RT. Then primary antibody (1% BSA) was incubated at 4°C overnight. The primary is detected by a biotinylated secondary antibody and visualized using an HRP conjugated SP system.



Immunofluorescence

Image 2. Immunofluorescence staining of HepG2 cells with ABIN7169341 at 1:200, counter-stained with DAPI. The cells were fixed in 4% formaldehyde, permeabilized using 0.2% Triton X-100 and blocked in 10% normal Goat Serum. The cells were then incubated with the antibody overnight at 4°C. The secondary antibody was Alexa Fluor 488-conjugated AffiniPure Goat Anti-Rabbit IgG(H+L).



Immunohistochemistry

Image 3. IHC image of ABIN7169341 diluted at 1:600 and staining in paraffin-embedded human cervical cancer performed on a Leica Bond™ system. After dewaxing and hydration, antigen retrieval was mediated by high pressure in a citrate buffer (pH 6.0). Section was blocked with 10% normal goat serum 30min at RT. Then primary antibody (1% BSA) was incubated at 4°C overnight. The primary is detected by a biotinylated secondary antibody and visualized using an HRP conjugated SP system.