



Datasheet for ABIN7169360
anti-Albumin antibody (AA 76-389)



[Go to Product page](#)

3 Images

Overview

Quantity:	100 µg
Target:	Albumin (ALB)
Binding Specificity:	AA 76-389
Reactivity:	Human
Host:	Rabbit
Clonality:	Polyclonal
Conjugate:	This Albumin antibody is un-conjugated
Application:	ELISA, Western Blotting (WB), Immunohistochemistry (IHC), Immunofluorescence (IF)

Product Details

Immunogen:	Recombinant Human Serum albumin protein (76-389AA)
Isotype:	IgG
Cross-Reactivity:	Human, Mouse
Purification:	>95%, Protein G purified

Target Details

Target:	Albumin (ALB)
Alternative Name:	ALB (ALB Products)
Background:	Background: Serum albumin, the main protein of plasma, has a good binding capacity for water, Ca(2+), Na(+), K(+), fatty acids, hormones, bilirubin and drugs. Its main function is the regulation

Target Details

of the colloidal osmotic pressure of blood. Major zinc transporter in plasma, typically binds about 80 % of all plasma zinc.

Aliases: alb antibody, ALBU_HUMAN antibody, Albumin (32 AA) antibody, Albumin (AA 34) antibody, cell growth inhibiting protein 42 antibody, DKFZp779N1935 antibody, GIG20 antibody, GIG42 antibody, Growth inhibiting protein 20 antibody, growth-inhibiting protein 20 antibody, OTTHUMP00000220436 antibody, OTTHUMP00000220438 antibody, OTTHUMP00000220439 antibody, PRO0883 antibody, PRO0903 antibody, PRO1341 antibody, PRO1708 antibody, PRO2044 antibody, PRO2619 antibody, PRO2675 antibody, Serum albumin antibody, UNQ696/PRO1341 antibody

UniProt: [P02768](#)

Pathways: [Lipid Metabolism](#)

Application Details

Application Notes: Recommended dilution: WB:1:1000-1:5000, IHC:1:20-1:200, IF:1:50-1:200,

Restrictions: For Research Use only

Handling

Format: Liquid

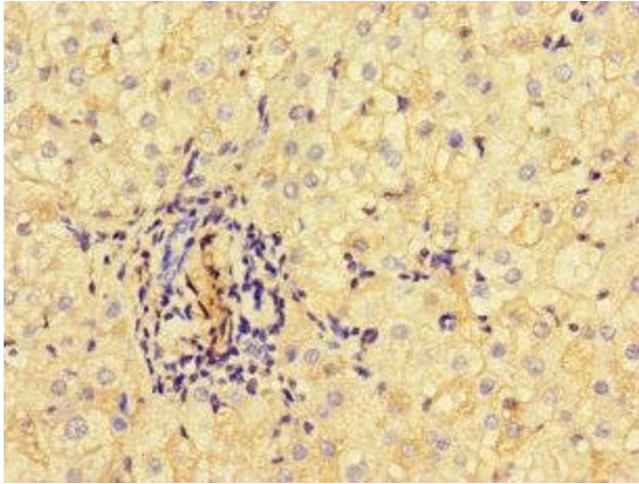
Buffer: Preservative: 0.03 % Proclin 300
Constituents: 50 % Glycerol, 0.01M PBS, PH 7.4

Preservative: ProClin

Precaution of Use: This product contains ProClin: a POISONOUS AND HAZARDOUS SUBSTANCE which should be handled by trained staff only.

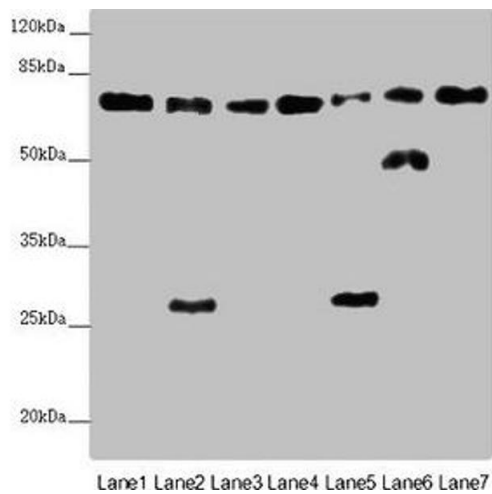
Storage: -20 °C,-80 °C

Storage Comment: Upon receipt, store at -20°C or -80°C. Avoid repeated freeze.



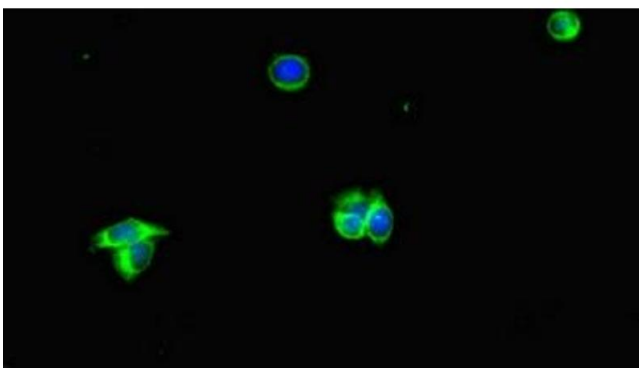
Immunohistochemistry

Image 1. Immunohistochemistry of paraffin-embedded human liver cancer using ABIN7169360 at dilution of 1:100



Western Blotting

Image 2. Western blot All lanes: ALB antibody at 2 µg/mL
 Lane 1: Mouse heart tissue Lane 2: Mouse liver tissue Lane 3: Mouse spleen tissue Lane 4: Mouse lung tissue Lane 5: Mouse kidney tissue Lane 6: Mouse brain tissue Lane 7: Mouse skeletal muscle tissue Secondary Goat polyclonal to rabbit IgG at 1/10000 dilution Predicted band size: 70, 48, 46 kDa Observed band size: 70, 50, 27 kDa



Immunofluorescence

Image 3. Immunofluorescent analysis of HepG2 cells using ABIN7169360 at dilution of 1:100 and Alexa Fluor 488-conjugated AffiniPure Goat Anti-Rabbit IgG(H+L)