

Datasheet for ABIN7169389
anti-PON3 antibody (AA 269-335)[Go to Product page](#)

2 Images

Overview

Quantity:	100 µg
Target:	PON3
Binding Specificity:	AA 269-335
Reactivity:	Human
Host:	Rabbit
Clonality:	Polyclonal
Conjugate:	This PON3 antibody is un-conjugated
Application:	Immunohistochemistry (IHC), ELISA

Product Details

Immunogen:	Recombinant Human Serum paraoxonase/lactonase 3 protein (269-335AA)
Isotype:	IgG
Cross-Reactivity:	Human
Purification:	>95%, Protein G purified

Target Details

Target:	PON3
Alternative Name:	PON3 (PON3 Products)
Background:	Background: Has low activity towards the organophosphate paraxon and aromatic carboxylic acid esters. Rapidly hydrolyzes lactones such as statin prodrugs (e.g. lovastatin). Hydrolyzes

Target Details

aromatic lactones and 5- or 6-member ring lactones with aliphatic substituents but not simple lactones or those with polar substituents.

Aliases: 2810004E20 antibody, A1786302 antibody, MGC95026 antibody, Paraoxonase 3 antibody, Pon3 antibody, PON3_HUMAN antibody, Serum paraoxonase/lactonase 3 antibody

UniProt: [Q15166](#)

Pathways: [Monocarboxylic Acid Catabolic Process](#)

Application Details

Application Notes: Recommended dilution: IHC:1:200-1:500,

Restrictions: For Research Use only

Handling

Format: Liquid

Buffer: Preservative: 0.03 % Proclin 300
Constituents: 50 % Glycerol, 0.01M PBS, pH 7.4

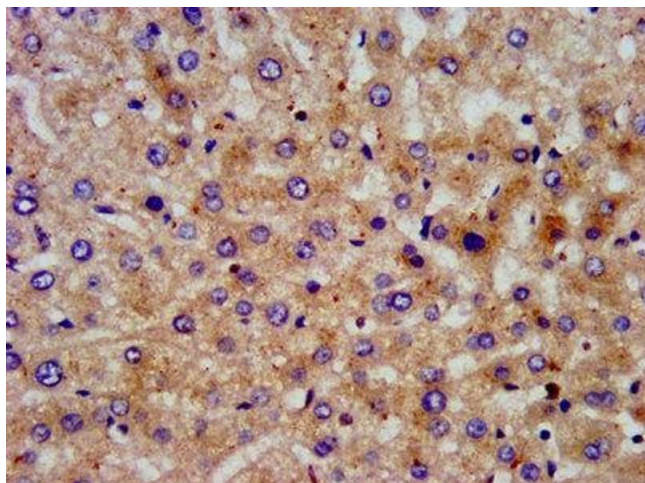
Preservative: ProClin

Precaution of Use: This product contains ProClin: a POISONOUS AND HAZARDOUS SUBSTANCE which should be handled by trained staff only.

Storage: -20 °C,-80 °C

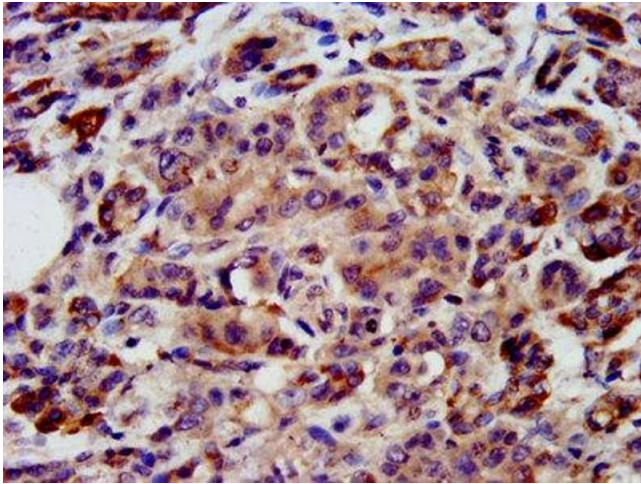
Storage Comment: Upon receipt, store at -20°C or -80°C. Avoid repeated freeze.

Images



Immunohistochemistry

Image 1. IHC image of ABIN7169389 diluted at 1:200 and staining in paraffin-embedded human liver tissue performed on a Leica Bond™ system. After dewaxing and hydration, antigen retrieval was mediated by high pressure in a citrate buffer (pH 6.0). Section was blocked with 10% normal goat serum 30min at RT. Then primary antibody (1% BSA) was incubated at 4°C overnight. The primary is detected by a biotinylated secondary antibody and visualized using an



HRP conjugated SP system.

Immunohistochemistry

Image 2. IHC image of ABIN7169389 diluted at 1:200 and staining in paraffin-embedded human pancreatic cancer performed on a Leica Bond™ system. After dewaxing and hydration, antigen retrieval was mediated by high pressure in a citrate buffer (pH 6.0). Section was blocked with 10% normal goat serum 30min at RT. Then primary antibody (1% BSA) was incubated at 4°C overnight. The primary is detected by a biotinylated secondary antibody and visualized using an HRP conjugated SP system.