



[Go to Product page](#)

Datasheet for ABIN7169405  
**anti-SESN1 antibody (AA 224-337)**

2 Images

Overview

Quantity:	100 µg
Target:	SESN1
Binding Specificity:	AA 224-337
Reactivity:	Human
Host:	Rabbit
Clonality:	Polyclonal
Application:	Western Blotting (WB), ELISA, Immunohistochemistry (IHC)

Product Details

Immunogen:	Recombinant Human Sestrin-1 protein (224-337AA)
Isotype:	IgG
Cross-Reactivity:	Human, Mouse
Purification:	>95%, Protein G purified

Target Details

Target:	SESN1
Alternative Name:	SESN1 ( <a href="#">SESN1 Products</a> )
Background:	Background: Functions as an intracellular leucine sensor that negatively regulates the TORC1 signaling pathway through the GATOR complex. In absence of leucine, binds the GATOR subcomplex GATOR2 and prevents TORC1 signaling. Binding of leucine to SESN2 disrupts its interaction with GATOR2 thereby activating the TORC1 signaling pathway (PubMed:25263562,

## Target Details

---

PubMed:26449471). This stress-inducible metabolic regulator may also play a role in protection against oxidative and genotoxic stresses (By similarity). May positively regulate the transcription by NFE2L2 of genes involved in the response to oxidative stress by facilitating the SQSTM1-mediated autophagic degradation of KEAP1 (PubMed:23274085). May have an alkylhydroperoxide reductase activity born by the N-terminal domain of the protein (By similarity). Was originally reported to contribute to oxidative stress resistance by reducing PRDX1 (PubMed:15105503). However, this could not be confirmed (By similarity).

Aliases: 1110002G11Rik antibody, AU044290 antibody, MGC118148 antibody, MGC138241 antibody, MGC142129 antibody, OTTMUSP00000022799 antibody, p53 activated gene 26 antibody, p53 regulated PA26 nuclear protein antibody, p53 regulated protein PA26 antibody, p53-regulated protein PA26 antibody, PA26 antibody, RP11-787I22.1 antibody, sesn1 antibody, SESN1\_HUMAN antibody, SEST1 antibody, sestrin 1 antibody, Sestrin-1 antibody

---

UniProt: [Q9Y6P5](#)

## Application Details

---

Application Notes: Recommended dilution: WB:1:500-1:5000, IHC:1:20-1:200,

Restrictions: For Research Use only

## Handling

---

Format: Liquid

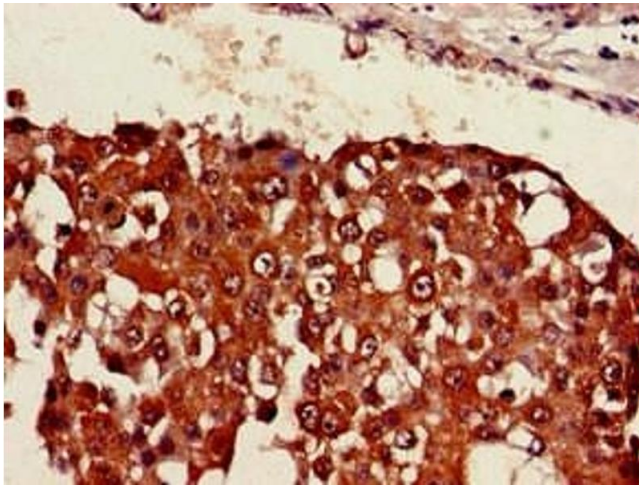
Buffer: Preservative: 0.03 % Proclin 300  
Constituents: 50 % Glycerol, 0.01M PBS, pH 7.4

Preservative: ProClin

Precaution of Use: This product contains ProClin: a POISONOUS AND HAZARDOUS SUBSTANCE which should be handled by trained staff only.

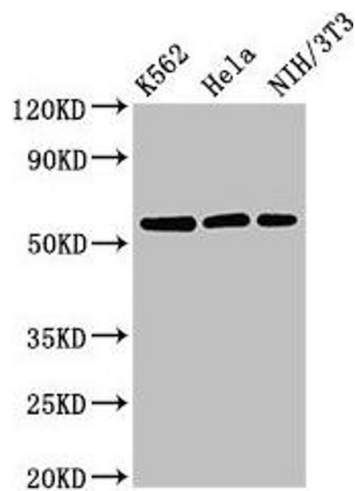
Storage: -20 °C,-80 °C

Storage Comment: Upon receipt, store at -20°C or -80°C. Avoid repeated freeze.



### Immunohistochemistry

**Image 1.** Immunohistochemistry of paraffin-embedded human breast cancer using ABIN7169405 at dilution of 1:100



### Western Blotting

**Image 2.** Western Blot Positive WB detected in: K562 whole cell lysate, HeLa whole cell lysate, NIH/3T3 whole cell lysate  
All lanes: SESN1 antibody at 3 µg/mL Secondary Goat polyclonal to rabbit IgG at 1/50000 dilution Predicted band size: 57, 64, 50 kDa Observed band size: 57 kDa