



[Go to Product page](#)

Datasheet for ABIN7169410
anti-SMYD4 antibody (AA 1-260)

3 Images

Overview

Quantity:	100 µL
Target:	SMYD4
Binding Specificity:	AA 1-260
Reactivity:	Human
Host:	Rabbit
Clonality:	Polyclonal
Conjugate:	This SMYD4 antibody is un-conjugated
Application:	Western Blotting (WB), Immunohistochemistry (IHC), ELISA

Product Details

Immunogen:	Recombinant Human SET and MYND domain-containing protein 4 protein (1-260AA)
Isotype:	IgG
Cross-Reactivity:	Human
Purification:	Antigen Affinity Purified

Target Details

Target:	SMYD4
Alternative Name:	SMYD4 (SMYD4 Products)
Background:	SMYD4 antibody, KIAA1936 antibody, SET and MYND domain-containing protein 4 antibody, EC 2.1.1.- antibody

Target Details

UniProt: [Q8IYR2](#)

Application Details

Application Notes: Recommended dilution: WB:1:500-1:2000, IHC:1:20-1:200,

Restrictions: For Research Use only

Handling

Format: Liquid

Buffer: PBS with 0.02 % sodium azide, 50 % glycerol, pH 7.3.

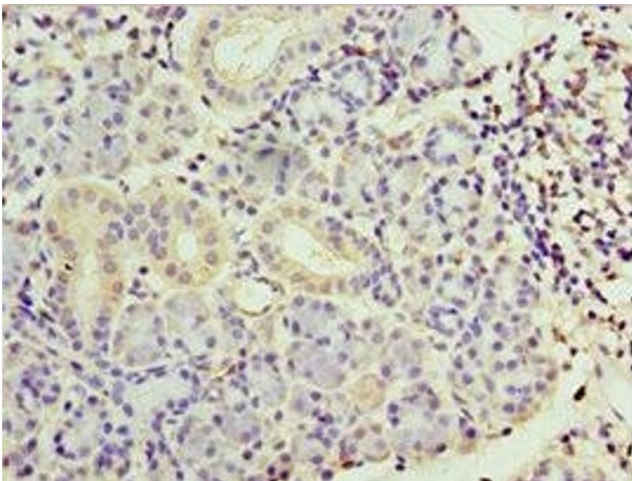
Preservative: Sodium azide

Precaution of Use: This product contains Sodium azide: a POISONOUS AND HAZARDOUS SUBSTANCE which should be handled by trained staff only.

Storage: -20 °C,-80 °C

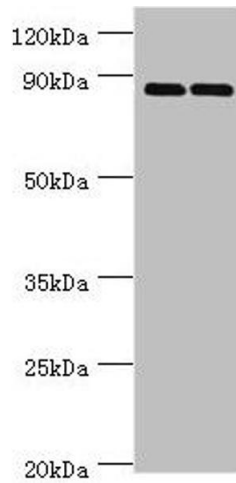
Storage Comment: Upon receipt, store at -20°C or -80°C. Avoid repeated freeze.

Images



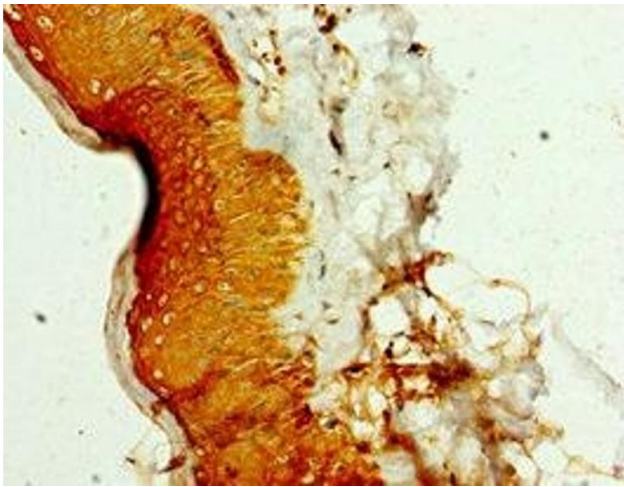
Immunohistochemistry

Image 1. Immunohistochemistry of paraffin-embedded human pancreatic tissue using ABIN7169410 at dilution of 1:100



Western Blotting

Image 2. Western blot All lanes: SET and MYND domain-containing protein 4 antibody at 4 µg/mL Lane 1: HepG2 whole cell lysate Lane 2: Hela whole cell lysate Secondary Goat polyclonal to rabbit IgG at 1/10000 dilution Predicted band size: 89 kDa Observed band size: 89 kDa



Immunohistochemistry

Image 3. Immunohistochemistry of paraffin-embedded human skin tissue using ABIN7169410 at dilution of 1:100