



[Go to Product page](#)

Datasheet for ABIN7169412
anti-SETD5 antibody (AA 519-700)

2 Images

Overview

Quantity:	100 µg
Target:	SETD5
Binding Specificity:	AA 519-700
Reactivity:	Human
Host:	Rabbit
Clonality:	Polyclonal
Conjugate:	This SETD5 antibody is un-conjugated
Application:	Immunohistochemistry (IHC), Immunofluorescence (IF), ELISA

Product Details

Immunogen:	Recombinant Human SET domain-containing protein 5 protein (519-700AA)
Isotype:	IgG
Cross-Reactivity:	Human
Purification:	>95%, Protein G purified

Target Details

Target:	SETD5
Alternative Name:	SETD5 (SETD5 Products)
Background:	SET domain containing 5 antibody, SET domain-containing protein 5 antibody, Setd5 antibody, SETD5_HUMAN antibody

Target Details

UniProt: [Q9C0A6](#)

Application Details

Application Notes: Recommended dilution: IHC:1:20-1:200, IF:1:50-1:200,

Restrictions: For Research Use only

Handling

Format: Liquid

Buffer: Preservative: 0.03 % Proclin 300
Constituents: 50 % Glycerol, 0.01M PBS, PH 7.4

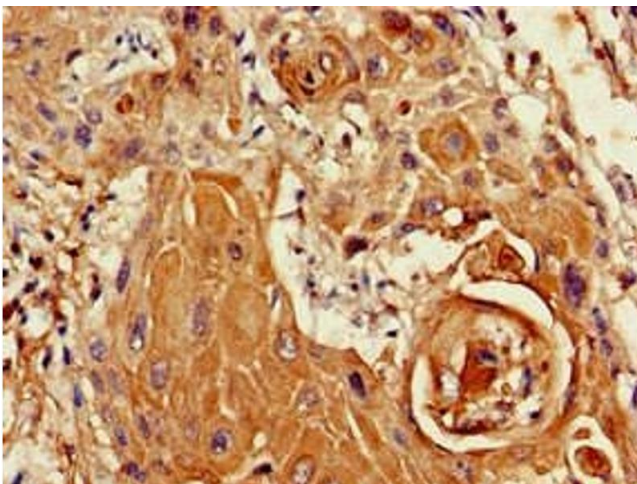
Preservative: ProClin

Precaution of Use: This product contains ProClin: a POISONOUS AND HAZARDOUS SUBSTANCE which should be handled by trained staff only.

Storage: -20 °C,-80 °C

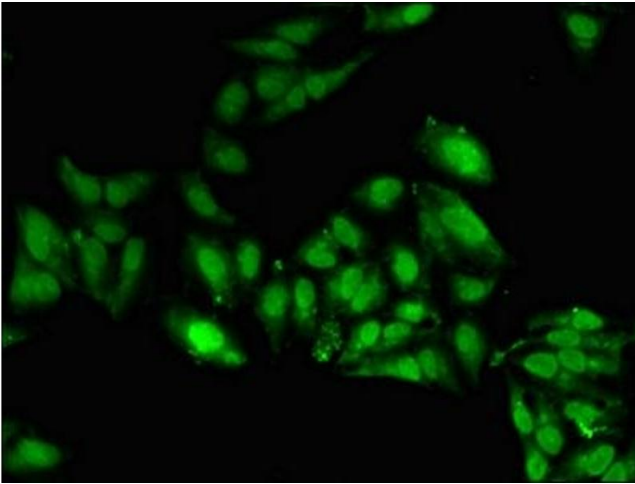
Storage Comment: Upon receipt, store at -20°C or -80°C. Avoid repeated freeze.

Images



Immunohistochemistry

Image 1. Immunohistochemistry of paraffin-embedded human cervical cancer using ABIN7169412 at dilution of 1:100



Immunofluorescence

Image 2. Immunofluorescent analysis of HeLa cells using ABIN7169412 at dilution of 1:100 and Alexa Fluor 488-conjugated AffiniPure Goat Anti-Rabbit IgG(H+L)