

Datasheet for ABIN7169424
anti-ASH2L antibody (AA 1-534)

5 Images

[Go to Product page](#)

Overview

Quantity:	100 µg
Target:	ASH2L
Binding Specificity:	AA 1-534
Reactivity:	Human
Host:	Rabbit
Clonality:	Polyclonal
Conjugate:	This ASH2L antibody is un-conjugated
Application:	Western Blotting (WB), ELISA, Immunohistochemistry (IHC), Immunofluorescence (IF)

Product Details

Immunogen:	Recombinant Human Set1/Ash2 histone methyltransferase complex subunit ASH2 protein (1-534AA)
Isotype:	IgG
Cross-Reactivity:	Human, Mouse
Purification:	>95%, Protein G purified

Target Details

Target:	ASH2L
Alternative Name:	ASH2L (ASH2L Products)
Background:	Background: Component of the Set1/Ash2 histone methyltransferase (HMT) complex, a

Target Details

complex that specifically methylates Lys-4 of histone H3, but not if the neighboring Lys-9 residue is already methylated. As part of the MLL1/MLL complex it is involved in methylation and dimethylation at Lys-4 of histone H3. May function as a transcriptional regulator. May play a role in hematopoiesis.

Aliases: ASH 2 antibody, Ash2 (absent small or homeotic) like antibody, Ash2 (absent, small, or homeotic) like (Drosophila) antibody, ASH2 antibody, ASH2 LIKE antibody, ASH2 like protein antibody, ASH2-like protein antibody, Ash2l antibody, ASH2L_HUMAN antibody, ASH2L1 antibody, ASH2L2 antibody, Bre 2 antibody, Bre2 antibody, Discs 2-like antibody, Drosophila absent, small, or homeotic antibody, Drosophila ASH2-like antibody, Set1/Ash2 histone methyltransferase complex subunit ASH2 antibody

UniProt: [Q9UBL3](#)

Application Details

Application Notes: Recommended dilution: WB:1:500-1:2000, IHC:1:20-1:200, IF:1:50-1:200,

Restrictions: For Research Use only

Handling

Format: Liquid

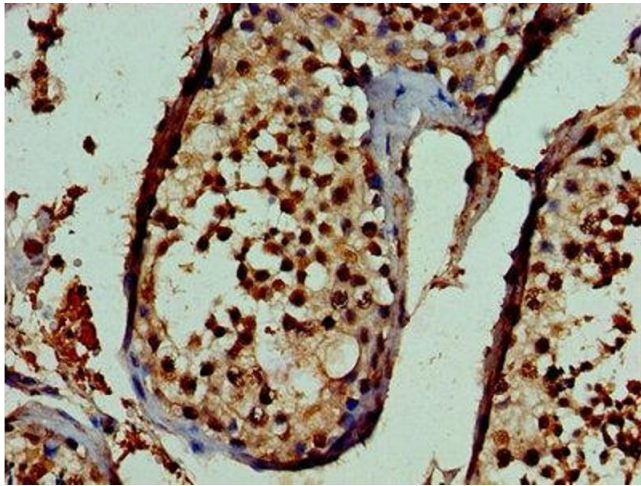
Buffer: Preservative: 0.03 % Proclin 300
Constituents: 50 % Glycerol, 0.01M PBS, PH 7.4

Preservative: ProClin

Precaution of Use: This product contains ProClin: a POISONOUS AND HAZARDOUS SUBSTANCE which should be handled by trained staff only.

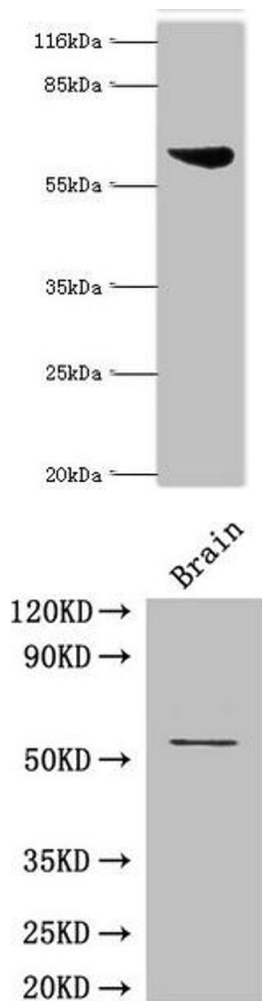
Storage: -20 °C,-80 °C

Storage Comment: Upon receipt, store at -20°C or -80°C. Avoid repeated freeze.



Immunohistochemistry

Image 1. Immunohistochemistry of paraffin-embedded human testis tissue using ABIN7169424 at dilution of 1:100



Western Blotting

Image 2. Western blot All lanes: Set1/Ash2 histone methyltransferase complex subunit ASH2 antibody at 2 μ g/mL + K562 whole cell lysate Secondary Goat polyclonal to rabbit IgG at 1/10000 dilution Predicted band size: 69, 57, 61 kDa Observed band size: 69 kDa

Western Blotting

Image 3. Western Blot Positive WB detected in: Mouse brain tissue All lanes: ASH2L antibody at 3 μ g/mL Secondary Goat polyclonal to rabbit IgG at 1/50000 dilution Predicted band size: 69, 57, 61 kDa Observed band size: 69 kDa

Please check the [product details page](#) for more images. Overall 5 images are available for ABIN7169424.