

Datasheet for ABIN7169428
anti-ASH2L antibody (AA 329-628)[Go to Product page](#)

2 Images

Overview

| | |
|----------------------|--------------------------------------|
| Quantity: | 100 µL |
| Target: | ASH2L |
| Binding Specificity: | AA 329-628 |
| Reactivity: | Human |
| Host: | Rabbit |
| Clonality: | Polyclonal |
| Conjugate: | This ASH2L antibody is un-conjugated |
| Application: | ELISA, Immunohistochemistry (IHC) |

Product Details

| | |
|-------------------|--|
| Immunogen: | Recombinant Human Set1/Ash2 histone methyltransferase complex subunit ASH2 protein (329-628AA) |
| Isotype: | IgG |
| Cross-Reactivity: | Human |
| Purification: | Antigen Affinity purified |

Target Details

| | |
|-------------------|---|
| Target: | ASH2L |
| Alternative Name: | ASH2L (ASH2L Products) |
| Background: | Background: Component of the Set1/Ash2 histone methyltransferase (HMT) complex, a |

Target Details

complex that specifically methylates '\\Lys-4\\' of histone H3, but not if the neighboring '\\Lys-9\\' residue is already methylated. As part of the MLL1/MLL complex it is involved in methylation and dimethylation at '\\Lys-4\\' of histone H3. May function as a transcriptional regulator. May play a role in hematopoiesis.

Aliases: ASH 2 antibody, Ash2 (absent small or homeotic) like antibody, Ash2 (absent, small, or homeotic) like (Drosophila) antibody, ASH2 antibody, ASH2 LIKE antibody, ASH2 like protein antibody, ASH2-like protein antibody, Ash2l antibody, ASH2L_HUMAN antibody, ASH2L1 antibody, ASH2L2 antibody, Bre 2 antibody, Bre2 antibody, Discs 2-like antibody, Drosophila absent, small, or homeotic antibody, Drosophila ASH2-like antibody, Set1/Ash2 histone methyltransferase complex subunit ASH2 antibody

UniProt: [Q9UBL3](#)

Application Details

Application Notes: Recommended dilution: IHC:1:20-1:200,

Restrictions: For Research Use only

Handling

Format: Liquid

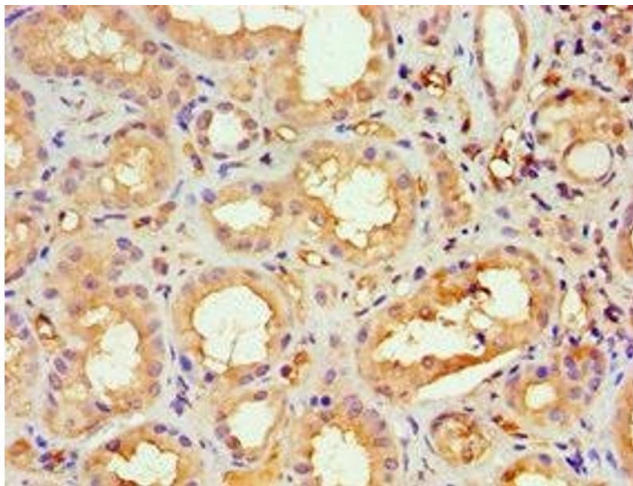
Buffer: PBS with 0.02 % sodium azide, 50 % glycerol, pH 7.3.

Preservative: Sodium azide

Precaution of Use: This product contains Sodium azide: a POISONOUS AND HAZARDOUS SUBSTANCE which should be handled by trained staff only.

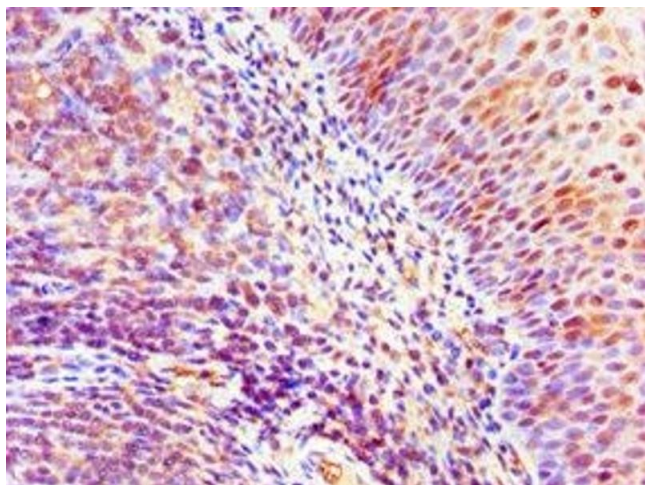
Storage: -20 °C, -80 °C

Storage Comment: Upon receipt, store at -20°C or -80°C. Avoid repeated freeze.



Immunohistochemistry

Image 1. Immunohistochemistry of paraffin-embedded human kidney tissue using ABIN7169428 at dilution of 1:100



Immunohistochemistry

Image 2. Immunohistochemistry of paraffin-embedded human tonsil tissue using ABIN7169428 at dilution of 1:100