

Datasheet for ABIN7169429
anti-SCML2 antibody (AA 466-620)[Go to Product page](#)

1 Image

Overview

Quantity:	100 µg
Target:	SCML2
Binding Specificity:	AA 466-620
Reactivity:	Human
Host:	Rabbit
Clonality:	Polyclonal
Conjugate:	This SCML2 antibody is un-conjugated
Application:	ELISA, Immunohistochemistry (IHC)

Product Details

Immunogen:	Recombinant Human Sex comb on midleg-like protein 2 protein (466-620AA)
Isotype:	IgG
Cross-Reactivity:	Human
Purification:	>95%, Protein G purified

Target Details

Target:	SCML2
Alternative Name:	SCML2 (SCML2 Products)
Background:	Background: Putative Polycomb group (PcG) protein. PcG proteins act by forming multiprotein complexes, which are required to maintain the transcriptionally repressive state of homeotic

Target Details

genes throughout development (By similarity).

Aliases: SCML2 antibody, SCML2_HUMAN antibody, sex comb on midleg like 2 (Drosophila) antibody, Sex comb on midleg like 2 antibody, Sex comb on midleg like protein 2 antibody, Sex comb on midleg, Drosophila, homolog-like 2 antibody, Sex comb on midleg-like protein 2 antibody

UniProt: [Q9UQR0](#)

Application Details

Application Notes: Recommended dilution: IHC:1:500-1:1000,

Restrictions: For Research Use only

Handling

Format: Liquid

Buffer: Preservative: 0.03 % Proclin 300
Constituents: 50 % Glycerol, 0.01M PBS, pH 7.4

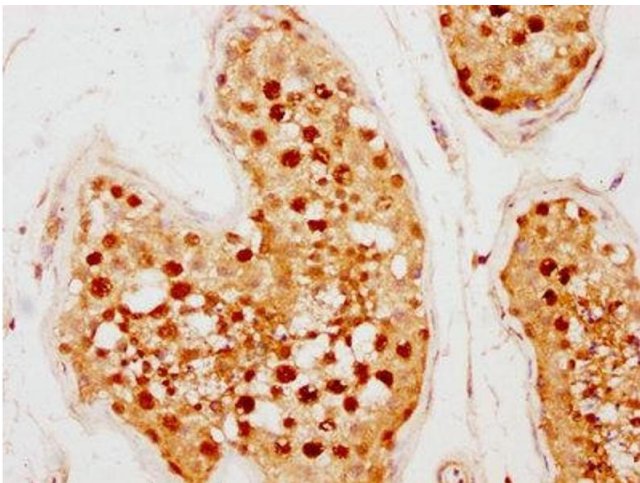
Preservative: ProClin

Precaution of Use: This product contains ProClin: a POISONOUS AND HAZARDOUS SUBSTANCE which should be handled by trained staff only.

Storage: -20 °C,-80 °C

Storage Comment: Upon receipt, store at -20°C or -80°C. Avoid repeated freeze.

Images



Immunohistochemistry

Image 1. IHC image of ABIN7169429 diluted at 1:500 and staining in paraffin-embedded human testis tissue performed on a Leica Bond™ system. After dewaxing and hydration, antigen retrieval was mediated by high pressure in a citrate buffer (pH 6.0). Section was blocked with 10 % normal goat serum 30 min at RT. Then primary antibody (1 % BSA) was incubated at 4 °C overnight. The primary is detected by a biotinylated secondary antibody and

visualized using an HRP conjugated SP system.