



[Go to Product page](#)

Datasheet for ABIN7169441
anti-SHE antibody (AA 2-162)

2 Images

Overview

Quantity:	100 µg
Target:	SHE
Binding Specificity:	AA 2-162
Reactivity:	Human
Host:	Rabbit
Clonality:	Polyclonal
Conjugate:	This SHE antibody is un-conjugated
Application:	ELISA, Western Blotting (WB), Immunohistochemistry (IHC)

Product Details

Immunogen:	Recombinant Human SH2 domain-containing adapter protein E protein (2-162AA)
Isotype:	IgG
Cross-Reactivity:	Human, Mouse, Rat
Purification:	>95%, Protein G purified

Target Details

Target:	SHE
Alternative Name:	SHE (SHE Products)
Background:	Background: SH3/SH2 adaptor activity, signal transduction Aliases: RP11-350G8.8 antibody, SH2 domain-containing adapter protein E antibody, She

Target Details

antibody, SHE_HUMAN antibody, Src homology 2 domain containing E antibody

UniProt: [Q5VZ18](#)

Application Details

Application Notes: Recommended dilution: WB:1:500-1:5000, IHC:1:20-1:200,

Restrictions: For Research Use only

Handling

Format: Liquid

Buffer: Preservative: 0.03 % Proclin 300
Constituents: 50 % Glycerol, 0.01M PBS, pH 7.4

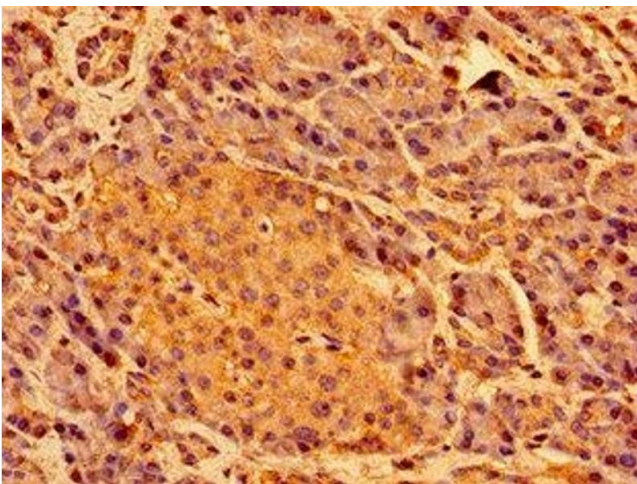
Preservative: ProClin

Precaution of Use: This product contains ProClin: a POISONOUS AND HAZARDOUS SUBSTANCE which should be handled by trained staff only.

Storage: -20 °C,-80 °C

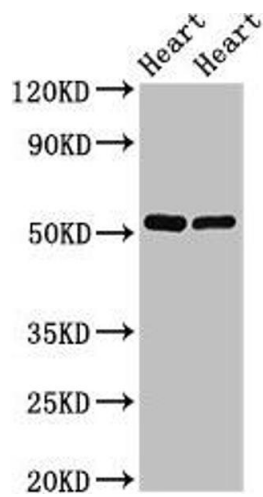
Storage Comment: Upon receipt, store at -20°C or -80°C. Avoid repeated freeze.

Images



Immunohistochemistry

Image 1. Immunohistochemistry of paraffin-embedded human pancreatic tissue using ABIN7169441 at dilution of 1:100



Western Blotting

Image 2. Western Blot Positive WB detected in: Rat heart tissue, Mouse heart tissue All lanes: SHE antibody at 2.5 μ g/mL Secondary Goat polyclonal to rabbit IgG at 1/50000 dilution Predicted band size: 54 kDa Observed band size: 54 kDa