

Datasheet for ABIN7169445  
**anti-SHF antibody (AA 1-159)**[Go to Product page](#)

## 1 Image

## Overview

Quantity:	100 µL
Target:	SHF
Binding Specificity:	AA 1-159
Reactivity:	Human
Host:	Rabbit
Clonality:	Polyclonal
Conjugate:	This SHF antibody is un-conjugated
Application:	ELISA, Immunofluorescence (IF)

## Product Details

Immunogen:	Recombinant Human SH2 domain-containing adapter protein F protein (1-159AA)
Isotype:	IgG
Cross-Reactivity:	Human
Purification:	>95%, Protein G purified

## Target Details

Target:	SHF
Alternative Name:	SHF ( <a href="#">SHF Products</a> )
Background:	Background: Adapter protein which may play a role in the regulation of apoptosis in response to PDGF.

## Target Details

Aliases: SHF antibody, SH2 domain-containing adapter protein F antibody

UniProt: [Q7M4L6](#)

## Application Details

Application Notes: Recommended dilution: IF:1:50-1:200,

Restrictions: For Research Use only

## Handling

Format: Liquid

Buffer: Preservative: 0.03 % Proclin 300  
Constituents: 50 % Glycerol, 0.01M PBS, pH 7.4

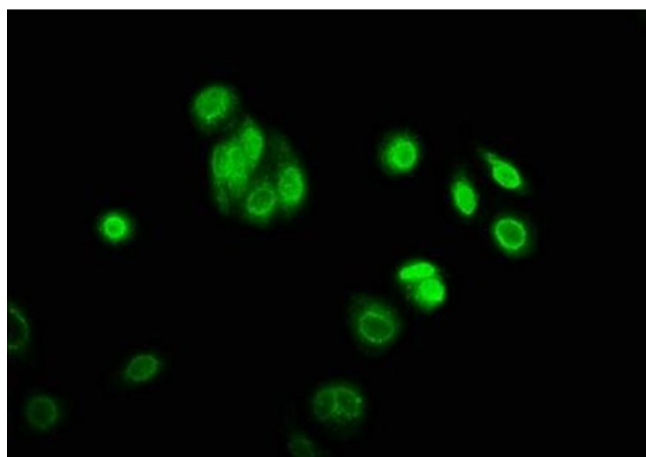
Preservative: ProClin

Precaution of Use: This product contains ProClin: a POISONOUS AND HAZARDOUS SUBSTANCE which should be handled by trained staff only.

Storage: -20 °C,-80 °C

Storage Comment: Upon receipt, store at -20°C or -80°C. Avoid repeated freeze.

## Images



### Immunofluorescence

**Image 1.** Immunofluorescence staining of HepG2 cells with ABIN7169445 at 1:166, counter-stained with DAPI. The cells were fixed in 4 % formaldehyde, permeabilized using 0.2 % Triton X-100 and blocked in 10 % normal Goat Serum. The cells were then incubated with the antibody overnight at 4 °C. The secondary antibody was Alexa Fluor 488-conjugated AffiniPure Goat Anti-Rabbit IgG(H+L).