

Datasheet for ABIN7169449
anti-SH2D1A antibody (AA 11-124)[Go to Product page](#)

2 Images

Overview

Quantity:	100 µg
Target:	SH2D1A
Binding Specificity:	AA 11-124
Reactivity:	Human
Host:	Rabbit
Clonality:	Polyclonal
Conjugate:	This SH2D1A antibody is un-conjugated
Application:	ELISA, Immunohistochemistry (IHC), Immunofluorescence (IF)

Product Details

Immunogen:	Recombinant Human SH2 domain-containing protein 1A protein (11-124AA)
Isotype:	IgG
Cross-Reactivity:	Human
Purification:	>95%, Protein G purified

Target Details

Target:	SH2D1A
Alternative Name:	SH2D1A (SH2D1A Products)
Background:	Background: Cytoplasmic adapter regulating receptors of the signaling lymphocytic activation molecule (SLAM) family such as SLAMF1, CD244, LY9, CD84, SLAMF6 and SLAMF7. In SLAM

Target Details

signaling seems to cooperate with SH2D1B/EAT-2. Initially it has been proposed that association with SLAMF1 prevents SLAMF1 binding to inhibitory effectors including INPP5D/SHIP1 and PTPN11/SHP-2 (PubMed:11806999). However, by simultaneous interactions, recruits FYN which subsequently phosphorylates and activates SLAMF1 (PubMed:12458214). Positively regulates CD244/2B4- and CD84-mediated natural killer (NK) cell functions. Can also promote CD48-, SLAMF6 -, LY9-, and SLAMF7-mediated NK cell activation. In the context of NK cell-mediated cytotoxicity enhances conjugate formation with target cells (By similarity). May also regulate the activity of the neurotrophin receptors NTRK1, NTRK2 and NTRK3.

Aliases: DSHP antibody, Duncan disease SH2 protein antibody, Duncan disease SH2-protein antibody, EBVS antibody, IMD5 antibody, LYP antibody, MTCP1 antibody, SAP antibody, SAP/SH2D1A antibody, SH2 domain containing 1A antibody, SH2 domain protein 1A antibody, SH2 domain-containing protein 1A antibody, SH21A_HUMAN antibody, SH2D1A antibody, Signaling lymphocyte activation molecule associated protein antibody, Signaling lymphocytic activation molecule-associated protein antibody, SLAM associated protein antibody, SLAM associated protein/SH2 domain protein 1A antibody, SLAM-associated protein antibody, T cell signal transduction molecule SAP antibody, T-cell signal transduction molecule SAP antibody, XLP antibody, XLPD antibody

UniProt: [O60880](#)

Pathways: [Regulation of Leukocyte Mediated Immunity](#), [Positive Regulation of Immune Effector Process](#)

Application Details

Application Notes: Recommended dilution: IHC:1:20-1:200, IF:1:50-1:200,

Restrictions: For Research Use only

Handling

Format: Liquid

Buffer: Preservative: 0.03 % Proclin 300
Constituents: 50 % Glycerol, 0.01M PBS, PH 7.4

Preservative: ProClin

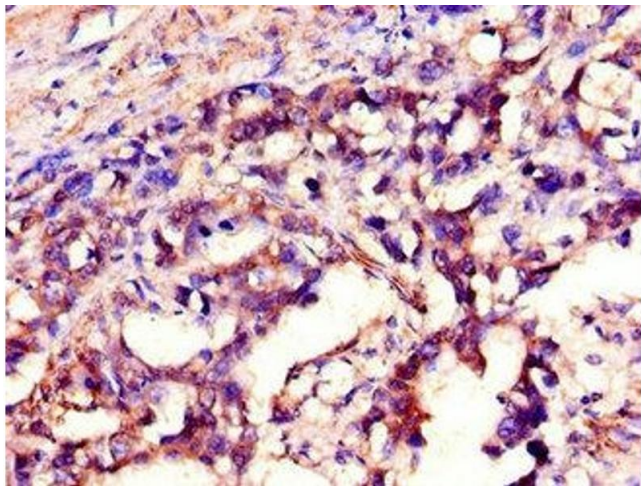
Precaution of Use: This product contains ProClin: a POISONOUS AND HAZARDOUS SUBSTANCE which should be handled by trained staff only.

Handling

Storage: -20 °C, -80 °C

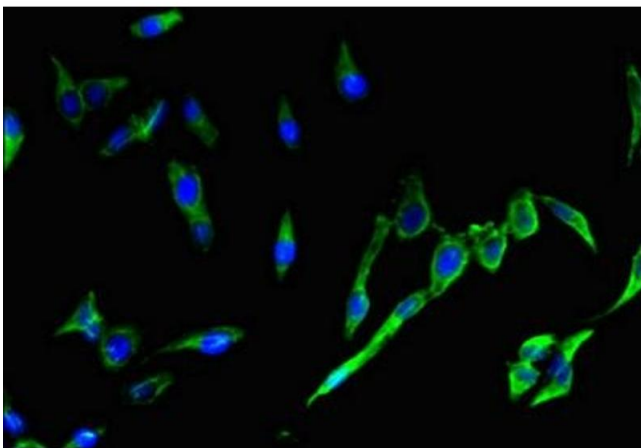
Storage Comment: Upon receipt, store at -20°C or -80°C. Avoid repeated freeze.

Images



Immunohistochemistry

Image 1. Immunohistochemistry of paraffin-embedded human gastric cancer using ABIN7169449 at dilution of 1:100



Immunofluorescence

Image 2. Immunofluorescent analysis of HeLa cells using ABIN7169449 at dilution of 1:100 and Alexa Fluor 488-conjugated AffiniPure Goat Anti-Rabbit IgG(H+L)