



[Go to Product page](#)

Datasheet for ABIN7169453  
**anti-SH2D1B antibody (AA 1-77)**

2 Images

### Overview

Quantity:	100 µg
Target:	SH2D1B
Binding Specificity:	AA 1-77
Reactivity:	Human
Host:	Rabbit
Clonality:	Polyclonal
Conjugate:	This SH2D1B antibody is un-conjugated
Application:	ELISA, Immunohistochemistry (IHC), Immunofluorescence (IF)

### Product Details

Immunogen:	Recombinant Human SH2 domain-containing protein 1B protein (1-77AA)
Isotype:	IgG
Cross-Reactivity:	Human
Purification:	>95%, Protein G purified

### Target Details

Target:	SH2D1B
Alternative Name:	SH2D1B ( <a href="#">SH2D1B Products</a> )
Background:	Background: Cytoplasmic adapter regulating receptors of the signaling lymphocytic activation molecule (SLAM) family such as CD84, SLAMF1, LY9 and CD244 (PubMed:11689425). In SLAM

## Target Details

---

signaling seems to cooperate with SH2D1A/SAP. Plays a role in regulation of effector functions of natural killer (NK) cells by controlling signal transduction through CD244/2B4 without effecting its tyrosine phosphorylation, downstream signaling involves PLCG1 and ERK activation (PubMed:24687958). Activation of SLAMF7-mediated NK cell function does not effect receptor tyrosine phosphorylation but distal signaling (By similarity). In the context of NK cell-mediated cytotoxicity does not enhance conjugate formation with target cells but stimulates polarization of the microtubule-organizing center and cytotoxic granules toward the NK cell synapse (PubMed:24687958). Negatively regulates CD40-induced cytokine production dendritic cells downstream of SLAM family receptors probably by inducing activation of the PI3K pathway to inhibit p38 MAPK and JNK activation (By similarity).

Aliases: SH2D1B antibody, EAT2 antibody, SH2 domain-containing protein 1B antibody, EWS/FLI1-activated transcript 2 antibody, EAT-2 antibody

---

UniProt: [O14796](#)

Pathways: [Regulation of Leukocyte Mediated Immunity](#), [Positive Regulation of Immune Effector Process](#)

## Application Details

---

Application Notes: Recommended dilution: IHC:1:20-1:200, IF:1:50-1:200,

Restrictions: For Research Use only

## Handling

---

Format: Liquid

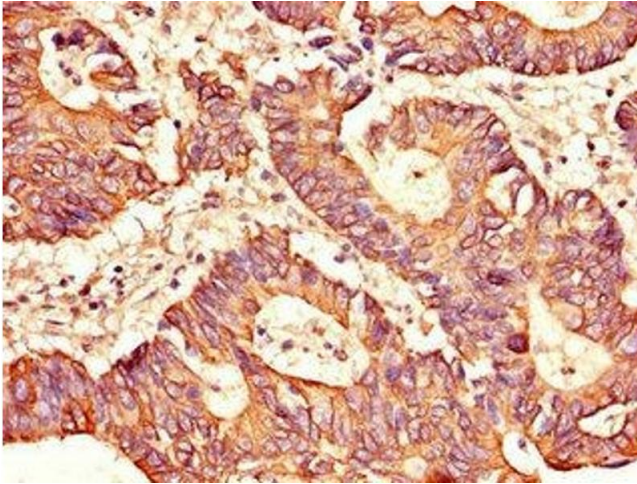
Buffer: Preservative: 0.03 % Proclin 300  
Constituents: 50 % Glycerol, 0.01M PBS, PH 7.4

Preservative: ProClin

Precaution of Use: This product contains ProClin: a POISONOUS AND HAZARDOUS SUBSTANCE which should be handled by trained staff only.

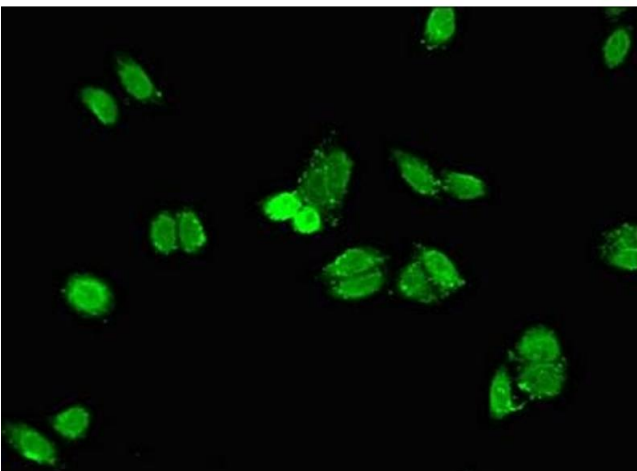
Storage: -20 °C,-80 °C

Storage Comment: Upon receipt, store at -20°C or -80°C. Avoid repeated freeze.



#### Immunohistochemistry

**Image 1.** Immunohistochemistry of paraffin-embedded human colon cancer using ABIN7169453 at dilution of 1:100



#### Immunofluorescence

**Image 2.** Immunofluorescent analysis of HepG2 cells using ABIN7169453 at dilution of 1:100 and Alexa Fluor 488-conjugated AffiniPure Goat Anti-Rabbit IgG(H+L)