

Datasheet for ABIN7169467
anti-SHANK2 antibody (AA 728-822)[Go to Product page](#)

2 Images

Overview

Quantity:	100 µg
Target:	SHANK2
Binding Specificity:	AA 728-822
Reactivity:	Human
Host:	Rabbit
Clonality:	Polyclonal
Conjugate:	This SHANK2 antibody is un-conjugated
Application:	Immunohistochemistry (IHC), ELISA

Product Details

Immunogen:	Recombinant Human SH3 and multiple ankyrin repeat domains protein 2 protein (728-822AA)
Isotype:	IgG
Cross-Reactivity:	Human
Purification:	>95%, Protein G purified

Target Details

Target:	SHANK2
Alternative Name:	SHANK2 (SHANK2 Products)
Background:	Background: Seems to be an adapter protein in the postsynaptic density (PSD) of excitatory synapses that interconnects receptors of the postsynaptic membrane including NMDA-type

Target Details

and metabotropic glutamate receptors, and the actin-based cytoskeleton. May play a role in the structural and functional organization of the dendritic spine and synaptic junction.

Aliases: SHANK2 antibody, CORTBP1 antibody, KIAA1022 antibody, PROSAP1 antibody, SH3 and multiple ankyrin repeat domains protein 2 antibody, Shank2 antibody, Cortactin-binding protein 1 antibody, CortBP1 antibody, Proline-rich synapse-associated protein 1 antibody

UniProt: [Q9UPX8](#)

Application Details

Application Notes: Recommended dilution: IHC:1:200-1:500,

Restrictions: For Research Use only

Handling

Format: Liquid

Buffer: Preservative: 0.03 % Proclin 300
Constituents: 50 % Glycerol, 0.01M PBS, pH 7.4

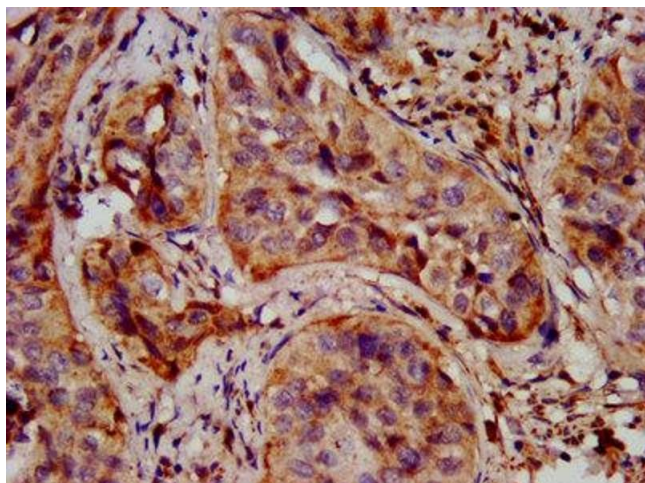
Preservative: ProClin

Precaution of Use: This product contains ProClin: a POISONOUS AND HAZARDOUS SUBSTANCE which should be handled by trained staff only.

Storage: -20 °C,-80 °C

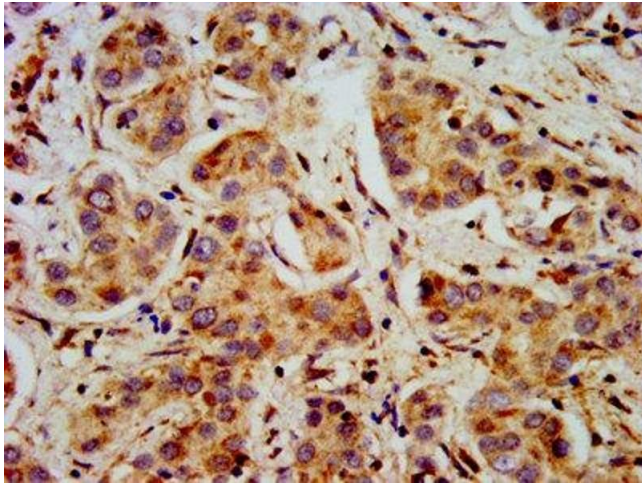
Storage Comment: Upon receipt, store at -20°C or -80°C. Avoid repeated freeze.

Images



Immunohistochemistry

Image 1. IHC image of ABIN7169467 diluted at 1:400 and staining in paraffin-embedded human cervical cancer performed on a Leica Bond™ system. After dewaxing and hydration, antigen retrieval was mediated by high pressure in a citrate buffer (pH 6.0). Section was blocked with 10% normal goat serum 30min at RT. Then primary antibody (1% BSA) was incubated at 4°C overnight. The primary is detected by a biotinylated secondary antibody and



visualized using an HRP conjugated SP system.

Immunohistochemistry

Image 2. IHC image of ABIN7169467 diluted at 1:400 and staining in paraffin-embedded human liver cancer performed on a Leica Bond™ system. After dewaxing and hydration, antigen retrieval was mediated by high pressure in a citrate buffer (pH 6.0). Section was blocked with 10% normal goat serum 30min at RT. Then primary antibody (1% BSA) was incubated at 4°C overnight. The primary is detected by a biotinylated secondary antibody and visualized using an HRP conjugated SP system.