



[Go to Product page](#)

Datasheet for ABIN7169487
anti-SH3BP1 antibody (AA 161-266)

1 Image

Overview

Quantity:	100 µg
Target:	SH3BP1
Binding Specificity:	AA 161-266
Reactivity:	Human
Host:	Rabbit
Clonality:	Polyclonal
Conjugate:	This SH3BP1 antibody is un-conjugated
Application:	ELISA, Immunohistochemistry (IHC)

Product Details

Immunogen:	Recombinant Human SH3 domain-binding protein 1 protein (161-266AA)
Isotype:	IgG
Cross-Reactivity:	Human
Purification:	>95%, Protein G purified

Target Details

Target:	SH3BP1
Alternative Name:	SH3BP1 (SH3BP1 Products)
Background:	Background: Binds differentially to the SH3 domains of certain proteins of signal transduction pathways. This protein binds preferentially to the ABL1 proto-oncogene, SRC and GRB2. Shows

Target Details

GAP activity for Rac-related proteins but not for Rho- or Ras-related proteins. It inhibits PDGF-induced membrane ruffling mediated by Rac (By similarity).

Aliases: 3BP 1 antibody, 3BP-1 antibody, 3BP1_HUMAN antibody, ARHGAP43 antibody, dJ37E16 antibody, FLJ21318 antibody, OTTHUMP00000028981 antibody, SH3 domain binding protein 1 antibody, SH3 domain-binding protein 1 antibody, Sh3bp1 antibody

UniProt: [Q9Y3L3](#)

Application Details

Application Notes: Recommended dilution: IHC:1:200-1:500,

Restrictions: For Research Use only

Handling

Format: Liquid

Buffer: Preservative: 0.03 % Proclin 300
Constituents: 50 % Glycerol, 0.01M PBS, pH 7.4

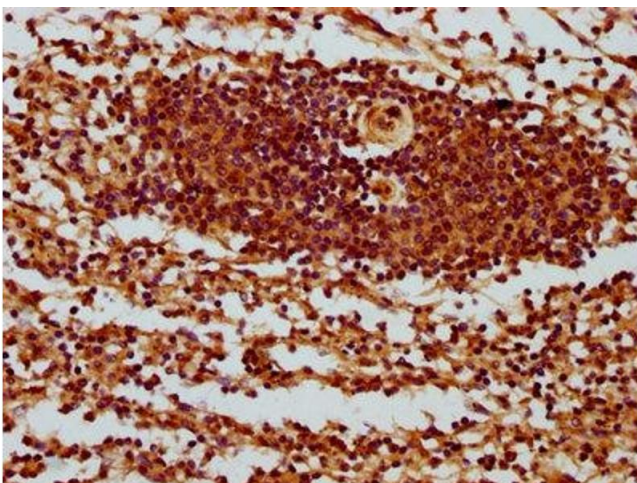
Preservative: ProClin

Precaution of Use: This product contains ProClin: a POISONOUS AND HAZARDOUS SUBSTANCE which should be handled by trained staff only.

Storage: -20 °C,-80 °C

Storage Comment: Upon receipt, store at -20°C or -80°C. Avoid repeated freeze.

Images



Immunohistochemistry

Image 1. IHC image of ABIN7169487 diluted at 1:400 and staining in paraffin-embedded human spleen tissue performed on a Leica Bond™ system. After dewaxing and hydration, antigen retrieval was mediated by high pressure in a citrate buffer (pH 6.0). Section was blocked with 10% normal goat serum 30min at RT. Then primary antibody (1% BSA) was incubated at 4°C overnight. The primary is detected by a biotinylated secondary antibody and

visualized using an HRP conjugated SP system.