

Datasheet for ABIN7169511
anti-SHC1 antibody (AA 207-370)

2 Images

[Go to Product page](#)

Overview

Quantity:	100 µg
Target:	SHC1
Binding Specificity:	AA 207-370
Reactivity:	Human
Host:	Rabbit
Clonality:	Polyclonal
Conjugate:	This SHC1 antibody is un-conjugated
Application:	Immunohistochemistry (IHC), ELISA, Immunofluorescence (IF)

Product Details

Immunogen:	Recombinant Human SHC-transforming protein 1 protein (207-370AA)
Isotype:	IgG
Cross-Reactivity:	Human
Purification:	>95%, Protein G purified

Target Details

Target:	SHC1
Alternative Name:	SHC1 (SHC1 Products)
Background:	Background: Signaling adapter that couples activated growth factor receptors to signaling pathways. Participates in a signaling cascade initiated by activated KIT and KITLG/SCF.

Target Details

Isoform p46Shc and isoform p52Shc, once phosphorylated, couple activated receptor tyrosine kinases to Ras via the recruitment of the GRB2/SOS complex and are implicated in the cytoplasmic propagation of mitogenic signals. Isoform p46Shc and isoform p52Shc may thus function as initiators of the Ras signaling cascade in various non-neuronal systems. Isoform p66Shc does not mediate Ras activation, but is involved in signal transduction pathways that regulate the cellular response to oxidative stress and life span. Isoform p66Shc acts as a downstream target of the tumor suppressor p53 and is indispensable for the ability of stress-activated p53 to induce elevation of intracellular oxidants, cytochrome c release and apoptosis. The expression of isoform p66Shc has been correlated with life span (By similarity).

Participates in signaling downstream of the angiopoietin receptor TEK/TIE2, and plays a role in the regulation of endothelial cell migration and sprouting angiogenesis.

Aliases: FLJ26504 antibody, p66 antibody, p66SHC antibody, SH2 domain protein C1 antibody, SHC (Src homology 2 domain containing) transforming protein 1 antibody, SHC 1 antibody, SHC A antibody, SHC adaptor protein 1 antibody, Shc antibody, SHC transforming protein 1 antibody, SHC transforming protein antibody, SHC-transforming protein 1 antibody, SHC-transforming protein 3 antibody, SHC-transforming protein A antibody, SHC1 antibody, SHC1_HUMAN antibody, SHCA antibody, Src homology 2 domain-containing-transforming protein C1 antibody

UniProt: [P29353](#)

Pathways: [RTK Signaling](#), [TCR Signaling](#), [Fc-epsilon Receptor Signaling Pathway](#), [EGFR Signaling Pathway](#), [Neurotrophin Signaling Pathway](#), [ER-Nucleus Signaling](#), [Signaling Events mediated by VEGFR1 and VEGFR2](#)

Application Details

Application Notes: Recommended dilution: IHC:1:20-1:200, IF:1:50-1:200,

Restrictions: For Research Use only

Handling

Format: Liquid

Buffer: Preservative: 0.03 % Proclin 300
Constituents: 50 % Glycerol, 0.01M PBS, PH 7.4

Preservative: ProClin

Precaution of Use: This product contains ProClin: a POISONOUS AND HAZARDOUS SUBSTANCE which should be

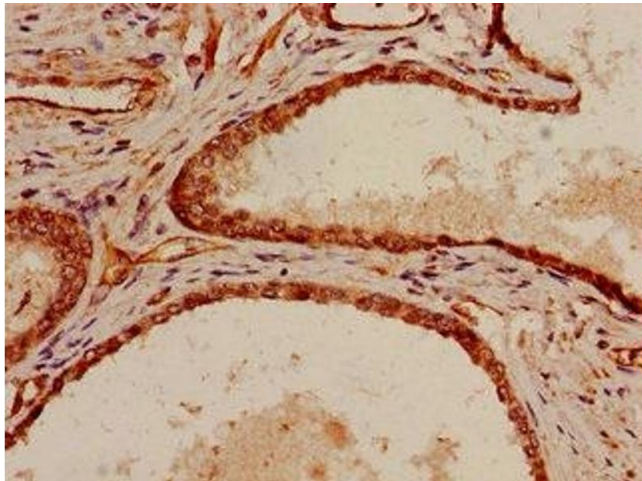
Handling

handled by trained staff only.

Storage: -20 °C, -80 °C

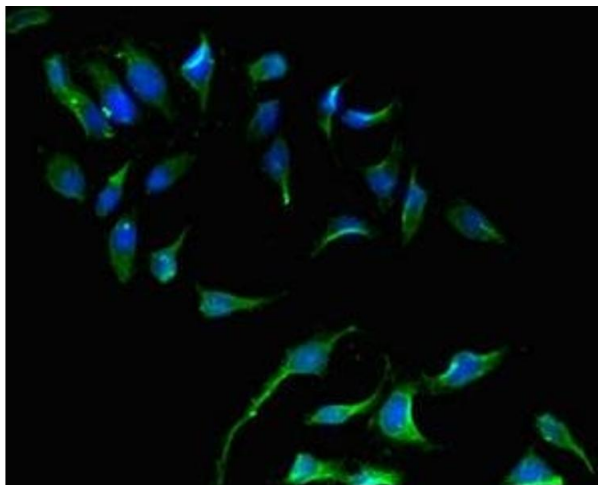
Storage Comment: Upon receipt, store at -20°C or -80°C. Avoid repeated freeze.

Images



Immunohistochemistry

Image 1. Immunohistochemistry of paraffin-embedded human prostate cancer using ABIN7169511 at dilution of 1:100



Immunofluorescence

Image 2. Immunofluorescent analysis of Hela cells using ABIN7169511 at dilution of 1:100 and Alexa Fluor 488-conjugated AffiniPure Goat Anti-Rabbit IgG(H+L)