

Datasheet for ABIN7169515  
**anti-SHC3 antibody (AA 323-468)**[Go to Product page](#)

## 1 Image

## Overview

Quantity:	100 µg
Target:	SHC3
Binding Specificity:	AA 323-468
Reactivity:	Human
Host:	Rabbit
Clonality:	Polyclonal
Conjugate:	This SHC3 antibody is un-conjugated
Application:	Western Blotting (WB), ELISA

## Product Details

Immunogen:	Recombinant Human SHC-transforming protein 3 protein (323-468AA)
Isotype:	IgG
Cross-Reactivity:	Human, Mouse
Purification:	>95%, Protein G purified

## Target Details

Target:	SHC3
Alternative Name:	SHC3 ( <a href="#">SHC3 Products</a> )
Background:	Background: Signaling adapter that couples activated growth factor receptors to signaling pathway in neurons. Involved in the signal transduction pathways of neurotrophin-activated Trk

## Target Details

receptors in cortical neurons.

Aliases: N SHC antibody, N-Shc antibody, Neuronal Shc antibody, NSHC antibody, Protein Rai antibody, Rai antibody, SH2 domain protein C3 antibody, SHC (Src homology 2 domain containing) transforming protein 3 antibody, SHC adaptor protein 3 antibody, SHC protein C antibody, SHC-like protein, neuronal antibody, SHC-transforming protein 3 antibody, SHC-transforming protein C antibody, Shc3 antibody, Shc3 p51 antibody, SHC3\_HUMAN antibody, SHCC antibody, Src homology 2 domain-containing transforming protein antibody, Src homology 2 domain-containing-transforming protein C3 antibody

UniProt: [Q92529](#)

Pathways: [RTK Signaling](#), [EGFR Signaling Pathway](#), [Neurotrophin Signaling Pathway](#)

## Application Details

Application Notes: Recommended dilution: WB:1:500-1:5000,

Restrictions: For Research Use only

## Handling

Format: Liquid

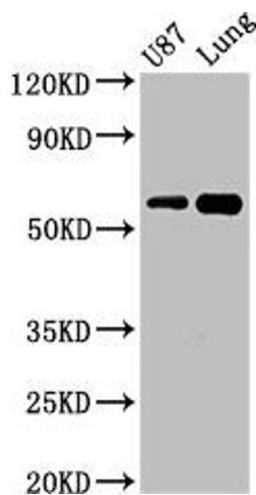
Buffer: Preservative: 0.03 % Proclin 300  
Constituents: 50 % Glycerol, 0.01M PBS, pH 7.4

Preservative: ProClin

Precaution of Use: This product contains ProClin: a POISONOUS AND HAZARDOUS SUBSTANCE which should be handled by trained staff only.

Storage: -20 °C, -80 °C

Storage Comment: Upon receipt, store at -20°C or -80°C. Avoid repeated freeze.



Western Blotting

**Image 1.** Western Blot Positive WB detected in: U87 whole cell lysate, Mouse lung tissue All lanes: SHC3 antibody at 3 µg/mL Secondary Goat polyclonal to rabbit IgG at 1/50000 dilution Predicted band size: 65, 52 kDa Observed band size: 65 kDa