

Datasheet for ABIN7169519  
**anti-SHC4 antibody (AA 1-185)**[Go to Product page](#)

## 2 Images

## Overview

Quantity:	100 µL
Target:	SHC4
Binding Specificity:	AA 1-185
Reactivity:	Human
Host:	Rabbit
Clonality:	Polyclonal
Conjugate:	This SHC4 antibody is un-conjugated
Application:	Western Blotting (WB), ELISA, Immunohistochemistry (IHC)

## Product Details

Immunogen:	Recombinant Human SHC-transforming protein 4 protein (1-185AA)
Isotype:	IgG
Cross-Reactivity:	Human
Purification:	Antigen Affinity Purified

## Target Details

Target:	SHC4
Alternative Name:	SHC4 ( <a href="#">SHC4 Products</a> )
Background:	Background: Activates both Ras-dependent and Ras-independent migratory pathways in melanomas. Contributes to the early phases of agrin-induced tyrosine phosphorylation of

## Target Details

CHRNA1.

Aliases: hShcD antibody, MGC34023 antibody, Rai like protein antibody, Rai-like protein antibody, RaLP antibody, SH2 domain protein C4 antibody, SHC (Src homology 2 domain containing) family member 4 antibody, SHC 4 antibody, SHC adaptor protein 4 antibody, SHC antibody, SHC family member 4 antibody, SHC transforming protein 4 antibody, SHC transforming protein D antibody, SHC-transforming protein 4 antibody, SHC-transforming protein D antibody, Shc4 antibody, SHC4\_HUMAN antibody, SHCD antibody, Src homology 2 domain containing family member 4 antibody, Src homology 2 domain containing transforming protein C4 antibody, Src homology 2 domain-containing-transforming protein C4 antibody

UniProt: [Q6S5L8](#)

## Application Details

Application Notes: Recommended dilution: WB:1:500-1:2000, IHC:1:20-1:200,

Restrictions: For Research Use only

## Handling

Format: Liquid

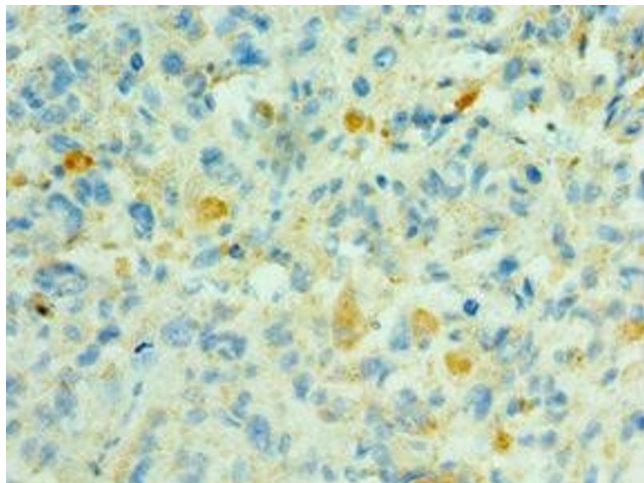
Buffer: PBS with 0.02 % sodium azide, 50 % glycerol, pH 7.3.

Preservative: Sodium azide

Precaution of Use: This product contains Sodium azide: a POISONOUS AND HAZARDOUS SUBSTANCE which should be handled by trained staff only.

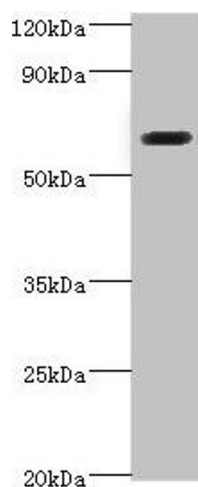
Storage: -20 °C,-80 °C

Storage Comment: Upon receipt, store at -20°C or -80°C. Avoid repeated freeze.



### Immunohistochemistry

**Image 1.** Immunohistochemistry of paraffin-embedded human melanoma using ABIN7169519 at dilution of 1:100



### Western Blotting

**Image 2.** Western blot All lanes: SHC4 antibody at 6 µg/mL + Jurkat whole cell lysate Secondary Goat polyclonal to rabbit IgG at 1/10000 dilution Predicted band size: 69, 43 kDa Observed band size: 69 kDa