

Datasheet for ABIN7169545
anti-Shugoshin antibody (AA 260-439)

3 Images

[Go to Product page](#)

Overview

Quantity:	100 µg
Target:	Shugoshin (SGOL1)
Binding Specificity:	AA 260-439
Reactivity:	Human
Host:	Rabbit
Clonality:	Polyclonal
Conjugate:	This Shugoshin antibody is un-conjugated
Application:	ELISA, Western Blotting (WB), Immunofluorescence (IF)

Product Details

Immunogen:	Recombinant Human Shugoshin 1 protein (260-439AA)
Isotype:	IgG
Cross-Reactivity:	Human, Mouse, Rat
Purification:	>95%, Protein G purified

Target Details

Target:	Shugoshin (SGOL1)
Alternative Name:	SGO1 (SGOL1 Products)
Background:	Background: Plays a central role in chromosome cohesion during mitosis by preventing premature dissociation of cohesin complex from centromeres after prophase, when most of

Target Details

cohesin complex dissociates from chromosomes arms. May act by preventing phosphorylation of the STAG2 subunit of cohesin complex at the centromere, ensuring cohesin persistence at centromere until cohesin cleavage by ESPL1/separase at anaphase. Essential for proper chromosome segregation during mitosis and this function requires interaction with PPP2R1A. Its phosphorylated form is necessary for chromosome congression and for the proper attachment of spindle microtubule to the kinetochore. Necessary for kinetochore localization of PLK1 and CENPF. May play a role in the tension sensing mechanism of the spindle-assembly checkpoint by regulating PLK1 kinetochore affinity. Isoform 3 plays a role in maintaining centriole cohesion involved in controlling spindle pole integrity.

Aliases: hSgo 1 antibody, hSgo1 antibody, NY BR 85 antibody, Serologically defined breast cancer antigen NY BR 85 antibody, Serologically defined breast cancer antigen NY-BR-85 antibody, SGO 1 antibody, SGO antibody, SGO L1 antibody, SGO1 antibody, SGOL 1 antibody, SGOL1 antibody, SGOL1_HUMAN antibody, Shugoshin 1AB protein antibody, Shugoshin 1CD protein antibody, Shugoshin 1EFprotein antibody, Shugoshin 1GH protein antibody, Shugoshin 1KL protein antibody, Shugoshin like 1 (S. pombe) antibody, Shugoshin like 1 antibody, Shugoshin-like 1 antibody

UniProt: [Q5FBB7](#)

Pathways: [Maintenance of Protein Location](#)

Application Details

Application Notes: Recommended dilution: WB:1:500-1:5000, IF:1:50-1:200,

Restrictions: For Research Use only

Handling

Format: Liquid

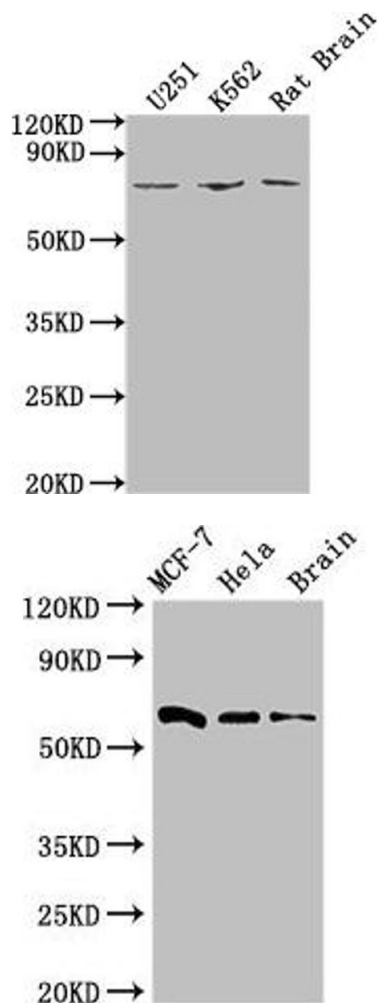
Buffer: Preservative: 0.03 % Proclin 300
Constituents: 50 % Glycerol, 0.01M PBS, pH 7.4

Preservative: ProClin

Precaution of Use: This product contains ProClin: a POISONOUS AND HAZARDOUS SUBSTANCE which should be handled by trained staff only.

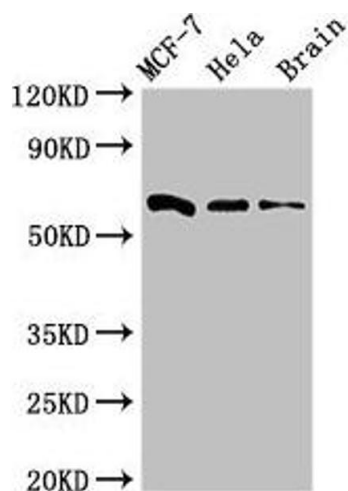
Storage: -20 °C,-80 °C

Storage Comment: Upon receipt, store at -20°C or -80°C. Avoid repeated freeze.



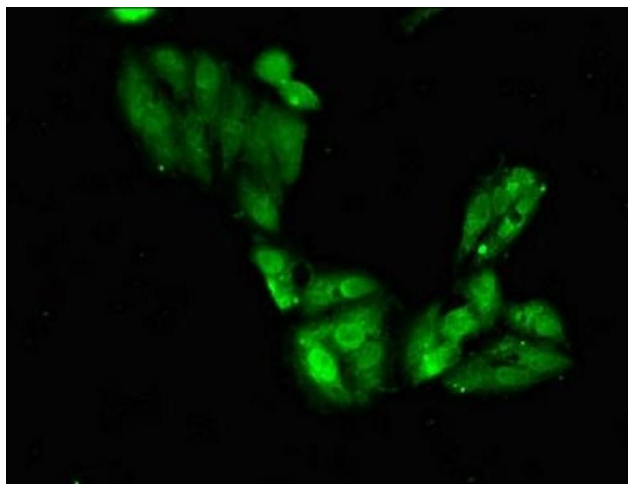
Western Blotting

Image 1. Western Blot Positive WB detected in: U251 whole cell lysate, K562 whole cell lysate, Rat Brain tissue All lanes: SGO1 antibody at 1:2000 Secondary Goat polyclonal to rabbit IgG at 1/50000 dilution Predicted band size: 65, 36, 34, 32, 30, 61, 25 kDa Observed band size: 65 kDa



Western Blotting

Image 2. Western Blot Positive WB detected in: MCF-7 whole cell lysate, HeLa whole cell lysate, Mouse brain tissue All lanes: SGO1 antibody at 3 µg/mL Secondary Goat polyclonal to rabbit IgG at 1/50000 dilution Predicted band size: 65, 36, 34, 32, 30, 61, 25 kDa Observed band size: 65 kDa



Immunofluorescence

Image 3. Immunofluorescent analysis of HeLa cells using ABIN7169545 at dilution of 1:100 and Alexa Fluor 488-conjugated AffiniPure Goat Anti-Rabbit IgG(H+L)