

Datasheet for ABIN7169566
anti-SIGLEC7 antibody (AA 377-467)[Go to Product page](#)

4 Images

Overview

Quantity:	100 µg
Target:	SIGLEC7
Binding Specificity:	AA 377-467
Reactivity:	Human
Host:	Rabbit
Clonality:	Polyclonal
Conjugate:	This SIGLEC7 antibody is un-conjugated
Application:	Western Blotting (WB), ELISA, Immunohistochemistry (IHC), Immunofluorescence (IF)

Product Details

Immunogen:	Recombinant Human Sialic acid-binding Ig-like lectin 7 protein (377-467AA)
Isotype:	IgG
Cross-Reactivity:	Human, Mouse
Purification:	>95%, Protein G purified

Target Details

Target:	SIGLEC7
Alternative Name:	SIGLEC7 (SIGLEC7 Products)
Background:	Background: Putative adhesion molecule that mediates sialic-acid dependent binding to cells. Preferentially binds to alpha-2,3- and alpha-2,6-linked sialic acid. Also binds disialogangliosides

Target Details

(disialogalactosyl globoside, disialyl lactotetraosylceramide and disialyl GalNAc lactotetraosylceramide). The sialic acid recognition site may be masked by cis interactions with sialic acids on the same cell surface. In the immune response, may act as an inhibitory receptor upon ligand induced tyrosine phosphorylation by recruiting cytoplasmic phosphatase(s) via their SH2 domain(s) that block signal transduction through dephosphorylation of signaling molecules. Mediates inhibition of natural killer cells cytotoxicity. May play a role in hemopoiesis. Inhibits differentiation of CD34+ cell precursors towards myelomonocytic cell lineage and proliferation of leukemic myeloid cells (in vitro).

Aliases: Adhesion inhibitory receptor molecule 1 antibody, Adhesion inhibitory receptor molecule 1, siglec 7 antibody, AIRM 1 antibody, AIRM-1 antibody, AIRM1 antibody, CD328 antibody, CD328 antigen antibody, CDw328 antibody, D siglec antibody, D-siglec antibody, HLDA 8 antibody, p75 antibody, p75/AIRM1 antibody, QA79 antibody, QA79 membrane protein antibody, Sialic acid binding Ig like lectin 7 antibody, Sialic acid binding immunoglobulin like lectin 7 antibody, Sialic acid-binding Ig-like lectin 7 antibody, SIGL7_HUMAN antibody, Siglec-7 antibody, SIGLEC19P antibody, SIGLEC7 antibody, SIGLECP2 antibody

UniProt: [Q9Y286](#)

Application Details

Application Notes: Recommended dilution: WB:1:500-1:5000, IHC:1:20-1:200, IF:1:50-1:200,

Restrictions: For Research Use only

Handling

Format: Liquid

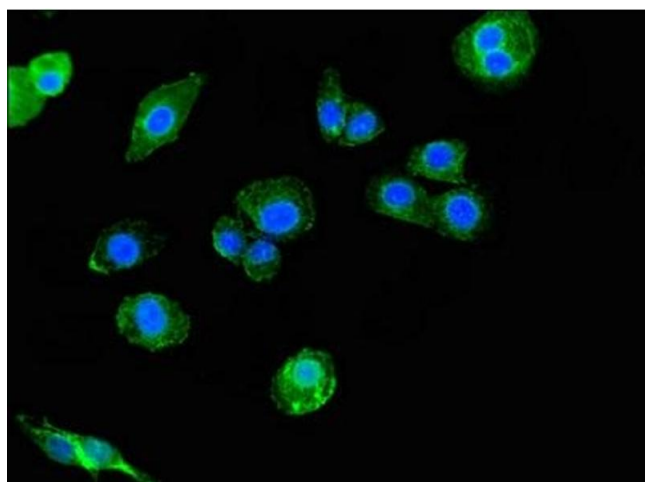
Buffer: Preservative: 0.03 % Proclin 300
Constituents: 50 % Glycerol, 0.01M PBS, pH 7.4

Preservative: ProClin

Precaution of Use: This product contains ProClin: a POISONOUS AND HAZARDOUS SUBSTANCE which should be handled by trained staff only.

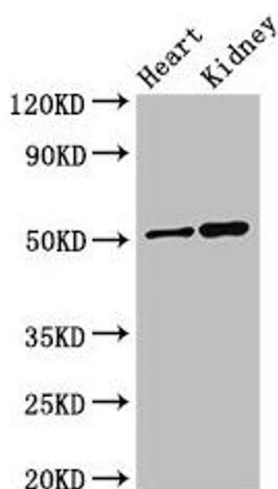
Storage: -20 °C, -80 °C

Storage Comment: Upon receipt, store at -20°C or -80°C. Avoid repeated freeze.



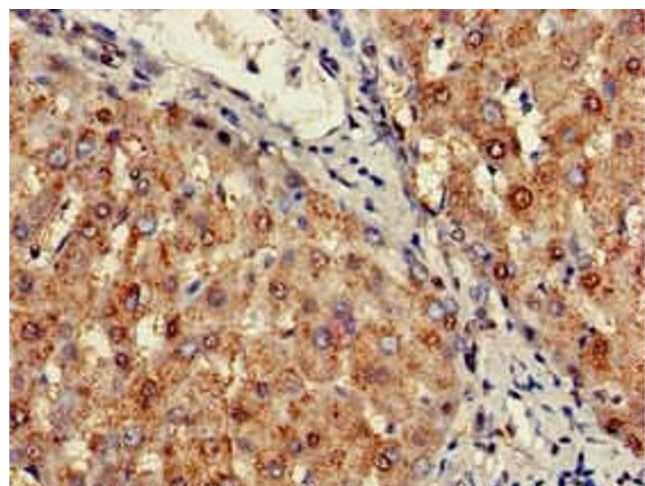
Immunofluorescence

Image 1. Immunofluorescent analysis of HepG2 cells using ABIN7169566 at dilution of 1:100 and Alexa Fluor 488-conjugated AffiniPure Goat Anti-Rabbit IgG(H+L)



Western Blotting

Image 2. Western Blot Positive WB detected in: Mouse heart tissue, Mouse kidney tissue All lanes: SIGLEC7 antibody at 3 µg/mL Secondary Goat polyclonal to rabbit IgG at 1/50000 dilution Predicted band size: 52, 42, 17 kDa Observed band size: 52 kDa



Immunohistochemistry

Image 3. Immunohistochemistry of paraffin-embedded human liver tissue using ABIN7169566 at dilution of 1:100

Please check the [product details page](#) for more images. Overall 4 images are available for ABIN7169566.