

Datasheet for ABIN7169579  
**anti-Sialidase 4 antibody (AA 225-377)**[Go to Product page](#)

## 3 Images

## Overview

Quantity:	100 µg
Target:	Sialidase 4 (NEU4)
Binding Specificity:	AA 225-377
Reactivity:	Human
Host:	Rabbit
Clonality:	Polyclonal
Conjugate:	This Sialidase 4 antibody is un-conjugated
Application:	ELISA, Immunohistochemistry (IHC), Immunofluorescence (IF)

## Product Details

Immunogen:	Recombinant Human Sialidase-4 protein (225-377AA)
Isotype:	IgG
Cross-Reactivity:	Human
Purification:	>95%, Protein G purified

## Target Details

Target:	Sialidase 4 (NEU4)
Alternative Name:	NEU4 ( <a href="#">NEU4 Products</a> )
Background:	Background: May function in lysosomal catabolism of sialylated glycoconjugates. Has sialidase activity towards synthetic substrates, such as 2\\\'-(4-methylumbelliferyl)-alpha-D-N-

## Target Details

acetylneuraminic acid (4-MU-NANA or 4MU-NeuAc). Has a broad substrate specificity being active on glycoproteins, oligosaccharides and sialylated glycolipids.

Aliases: NEU4 antibody, LP5125Sialidase-4 antibody, EC 3.2.1.18 antibody, N-acetyl-alpha-neuraminidase 4 antibody

UniProt: [Q8WWR8](#)

## Application Details

Application Notes: Recommended dilution: IHC:1:200-1:500, IF:1:50-1:200,

Restrictions: For Research Use only

## Handling

Format: Liquid

Buffer: Preservative: 0.03 % Proclin 300  
Constituents: 50 % Glycerol, 0.01M PBS, pH 7.4

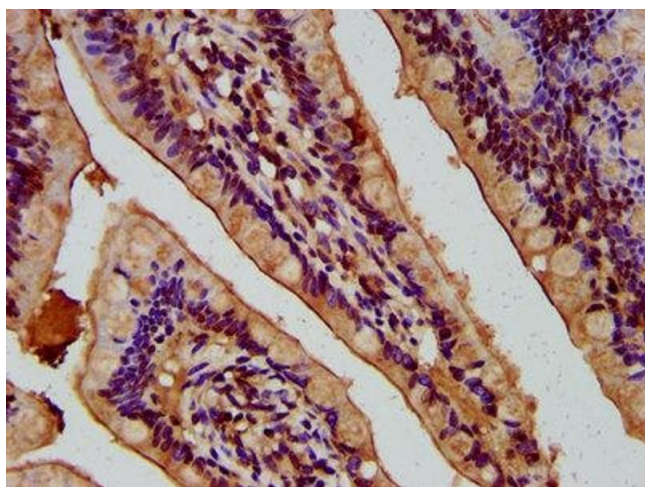
Preservative: ProClin

Precaution of Use: This product contains ProClin: a POISONOUS AND HAZARDOUS SUBSTANCE which should be handled by trained staff only.

Storage: -20 °C,-80 °C

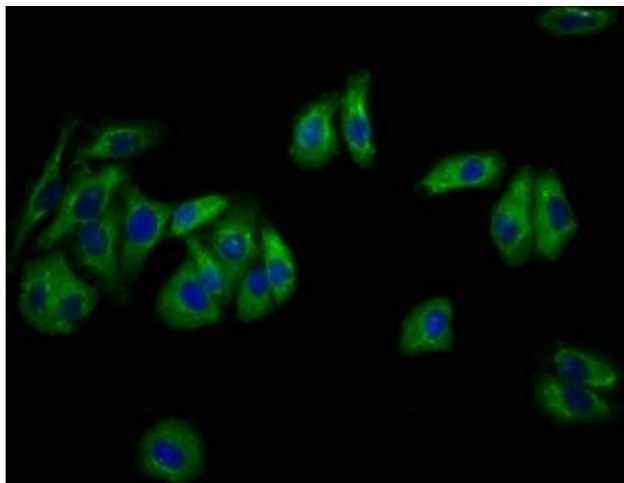
Storage Comment: Upon receipt, store at -20°C or -80°C. Avoid repeated freeze.

## Images



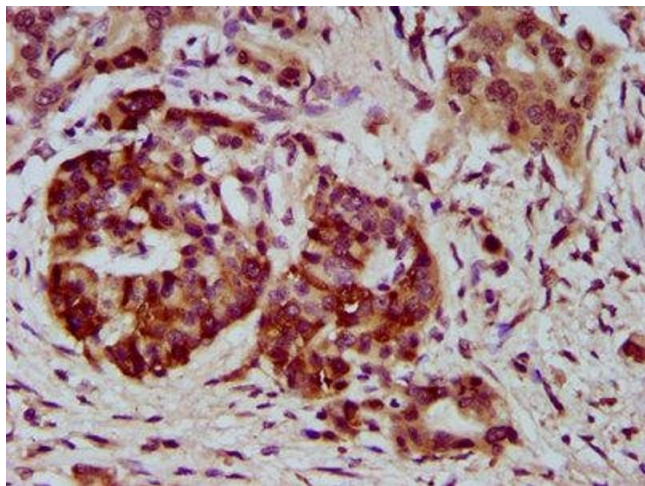
### Immunohistochemistry

**Image 1.** IHC image of ABIN7169579 diluted at 1:400 and staining in paraffin-embedded human small intestine tissue performed on a Leica Bond™ system. After dewaxing and hydration, antigen retrieval was mediated by high pressure in a citrate buffer (pH 6.0). Section was blocked with 10% normal goat serum 30min at RT. Then primary antibody (1% BSA) was incubated at 4°C overnight. The primary is detected by a biotinylated secondary antibody and visualized using an HRP conjugated SP system.



#### Immunofluorescence

**Image 2.** Immunofluorescence staining of HepG2 cells with ABIN7169579 at 1:133, counter-stained with DAPI. The cells were fixed in 4% formaldehyde, permeabilized using 0.2% Triton X-100 and blocked in 10% normal Goat Serum. The cells were then incubated with the antibody overnight at 4°C. The secondary antibody was Alexa Fluor 488-conjugated AffiniPure Goat Anti-Rabbit IgG(H+L).



#### Immunohistochemistry

**Image 3.** IHC image of ABIN7169579 diluted at 1:400 and staining in paraffin-embedded human pancreatic cancer performed on a Leica Bond™ system. After dewaxing and hydration, antigen retrieval was mediated by high pressure in a citrate buffer (pH 6.0). Section was blocked with 10% normal goat serum 30min at RT. Then primary antibody (1% BSA) was incubated at 4°C overnight. The primary is detected by a biotinylated secondary antibody and visualized using an HRP conjugated SP system.