



[Go to Product page](#)

Datasheet for ABIN7169587
anti-SFXN2 antibody (AA 1-99)

3 Images

Overview

Quantity:	100 µg
Target:	SFXN2
Binding Specificity:	AA 1-99
Reactivity:	Human
Host:	Rabbit
Clonality:	Polyclonal
Conjugate:	This SFXN2 antibody is un-conjugated
Application:	ELISA, Immunohistochemistry (IHC), Immunofluorescence (IF)

Product Details

Immunogen:	Recombinant Human Sideroflexin-2 protein (1-99AA)
Isotype:	IgG
Cross-Reactivity:	Human
Purification:	>95%, Protein G purified

Target Details

Target:	SFXN2
Alternative Name:	SFXN2 (SFXN2 Products)
Background:	Background: Potential iron transporter. Aliases: SFXN2 antibody, Sideroflexin-2 antibody

Target Details

UniProt:	Q96NB2
Pathways:	Transition Metal Ion Homeostasis

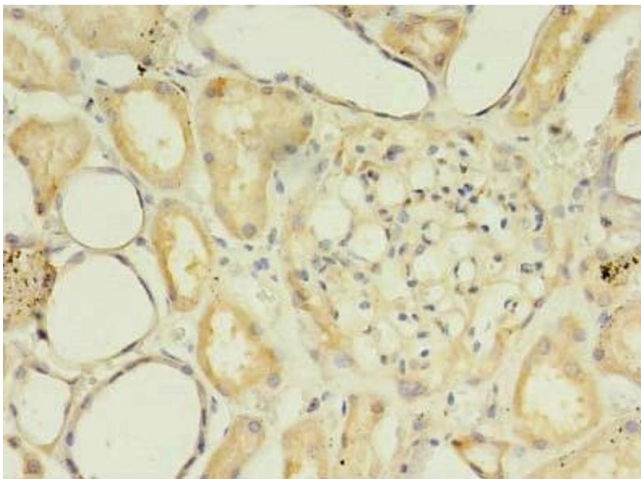
Application Details

Application Notes:	Recommended dilution: IHC:1:20-1:200, IF:1:50-1:200,
Restrictions:	For Research Use only

Handling

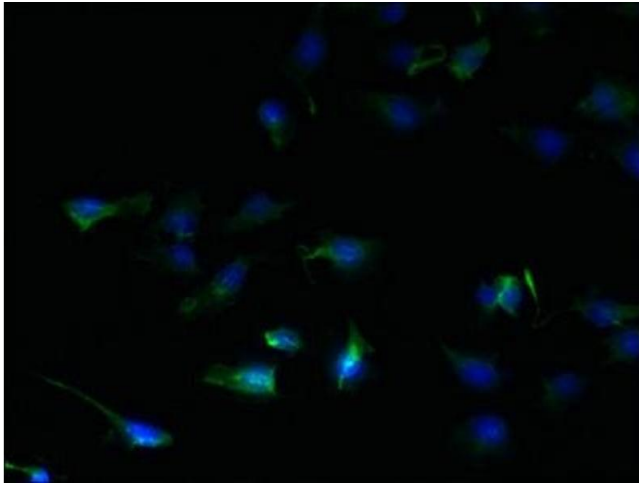
Format:	Liquid
Buffer:	Preservative: 0.03 % Proclin 300 Constituents: 50 % Glycerol, 0.01M PBS, PH 7.4
Preservative:	ProClin
Precaution of Use:	This product contains ProClin: a POISONOUS AND HAZARDOUS SUBSTANCE which should be handled by trained staff only.
Storage:	-20 °C,-80 °C
Storage Comment:	Upon receipt, store at -20°C or -80°C. Avoid repeated freeze.

Images



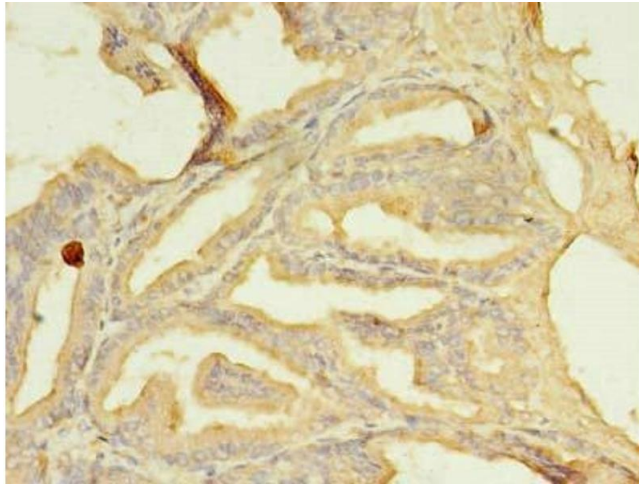
Immunohistochemistry

Image 1. Immunohistochemistry of paraffin-embedded human kidney tissue using ABIN7169587 at dilution of 1:100



Immunofluorescence

Image 2. Immunofluorescent analysis of U251 cells using ABIN7169587 at dilution of 1:100 and Alexa Fluor 488-conjugated AffiniPure Goat Anti-Rabbit IgG(H+L)



Immunohistochemistry

Image 3. Immunohistochemistry of paraffin-embedded human prostate cancer using ABIN7169587 at dilution of 1:100