

Datasheet for ABIN7169631
anti-SPPL3 antibody (AA 213-263)[Go to Product page](#)

2 Images

Overview

Quantity:	100 µg
Target:	SPPL3
Binding Specificity:	AA 213-263
Reactivity:	Human
Host:	Rabbit
Clonality:	Polyclonal
Conjugate:	This SPPL3 antibody is un-conjugated
Application:	ELISA, Western Blotting (WB), Immunofluorescence (IF)

Product Details

Immunogen:	Recombinant Human Signal peptide peptidase-like 3 protein (213-263AA)
Isotype:	IgG
Cross-Reactivity:	Human
Purification:	>95%, Protein G purified

Target Details

Target:	SPPL3
Alternative Name:	SPPL3 (SPPL3 Products)
Background:	Background: Intramembrane-cleaving aspartic protease (I-CLiP) that cleaves type II membrane protein substrates in or close to their luminal transmembrane domain boundaries

Target Details

(PubMed:16873890, PubMed:25354954, PubMed:25827571). Acts like a sheddase by mediating the proteolytic release and secretion of active site-containing ectodomains of glycan-modifying glycosidase and glycosyltransferase enzymes such as MGAT5, B4GAT1 and B4GALT1 (PubMed:25354954, PubMed:25827571). Catalyzes the intramembrane cleavage of the envelope glycoprotein gp130 and/or the leader peptide gp18LP of the simian foamy virus independent of prior ectodomain shedding by furin or furin-like proprotein convertase (PC)-mediated cleavage proteolysis (PubMed:23132852). May also have the ability to serve as a shedding protease for subsequent intramembrane proteolysis by SPPL2A and SPPL2B of the envelope glycoprotein gp130 (PubMed:23132852). Plays a role in the regulation of cellular glycosylation processes (PubMed:25354954). Required to link T-cell antigen receptor (TCR) and calcineurin-NFAT signaling cascades in lymphocytes by promoting the association of STIM1 and ORAI1 during store-operated calcium entry (SOCE) in a protease-independent manner (PubMed:25384971).

Aliases: SPPL3 antibody, IMP2 antibody, PSL4 antibody, Signal peptide peptidase-like 3 antibody, SPP-like 3 antibody, EC 3.4.23.- antibody, Intramembrane protease 2 antibody, IMP-2 antibody, Presenilin homologous protein 1 antibody, PSH1 antibody, Presenilin-like protein 4 antibody

UniProt: [Q8TCT6](#)

Application Details

Application Notes: Recommended dilution: WB:1:200-1:2000, IF:1:50-1:200,

Restrictions: For Research Use only

Handling

Format: Liquid

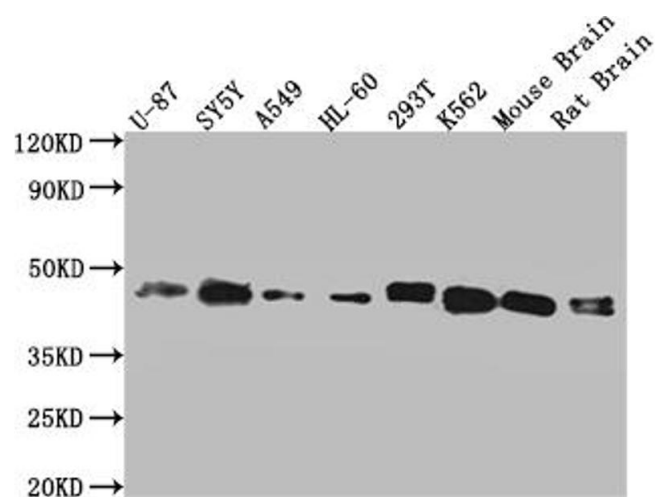
Buffer: Preservative: 0.03 % Proclin 300
Constituents: 50 % Glycerol, 0.01M PBS, PH 7.4

Preservative: ProClin

Precaution of Use: This product contains ProClin: a POISONOUS AND HAZARDOUS SUBSTANCE which should be handled by trained staff only.

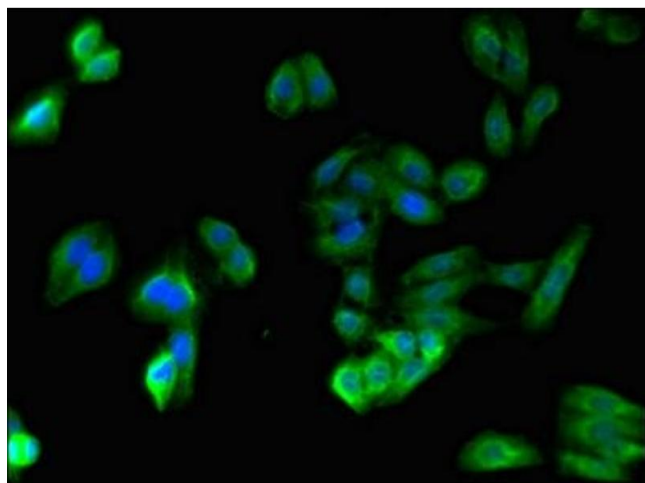
Storage: -20 °C, -80 °C

Storage Comment: Upon receipt, store at -20°C or -80°C. Avoid repeated freeze.



Western Blotting

Image 1. Western Blot Positive WB detected in: Hela whole cell lysate, HepG2 whole cell lysate, Jurkat whole cell lysate, MCF-7 whole cell lysate All lanes: SPPL3 antibody at 3 μ g/mL Secondary Goat polyclonal to rabbit IgG at 1/50000 dilution Predicted band size: 43, 19 kDa Observed band size: 43 kDa



Immunofluorescence

Image 2. Immunofluorescent analysis of HepG2 cells using ABIN7169631 at dilution of 1:100 and Alexa Fluor 488-conjugated AffiniPure Goat Anti-Rabbit IgG(H+L)