



[Go to Product page](#)

Datasheet for ABIN7169639

anti-SCUBE2 antibody (AA 534-703)

2 Images

Overview

Quantity:	100 µg
Target:	SCUBE2
Binding Specificity:	AA 534-703
Reactivity:	Human
Host:	Rabbit
Clonality:	Polyclonal
Conjugate:	This SCUBE2 antibody is un-conjugated
Application:	ELISA, Western Blotting (WB), Immunohistochemistry (IHC)

Product Details

Immunogen:	Recombinant Human Signal peptide, CUB and EGF-like domain-containing protein 2 protein (534-703AA)
Isotype:	IgG
Cross-Reactivity:	Human, Rat
Purification:	>95%, Protein G purified

Target Details

Target:	SCUBE2
Alternative Name:	SCUBE2 (SCUBE2 Products)
Background:	Background: cell surface, extracellular region, extracellular space, cell differentiation, signal

Target Details

transduction

Aliases: 4932442019Rik antibody, Cegb1 antibody, Cegf1 antibody, CEGP1 antibody, Cegp1 protein antibody, CUB domain and EGF-like repeat containing 1 antibody, FLJ16792 antibody, FLJ35234 antibody, ICRFP703B1614Q5.1 antibody, MGC133057 antibody, Protein CEGP1 antibody, RGD1563998 antibody, SCUB2_HUMAN antibody, Scube2 antibody, Signal peptide, CUB and EGF-like domain-containing protein 2 antibody, Signal peptide, CUB domain, EGF-like 2 antibody

UniProt: [Q9NQ36](#)

Application Details

Application Notes: Recommended dilution: WB:1:500-1:5000, IHC:1:200-1:500,

Restrictions: For Research Use only

Handling

Format: Liquid

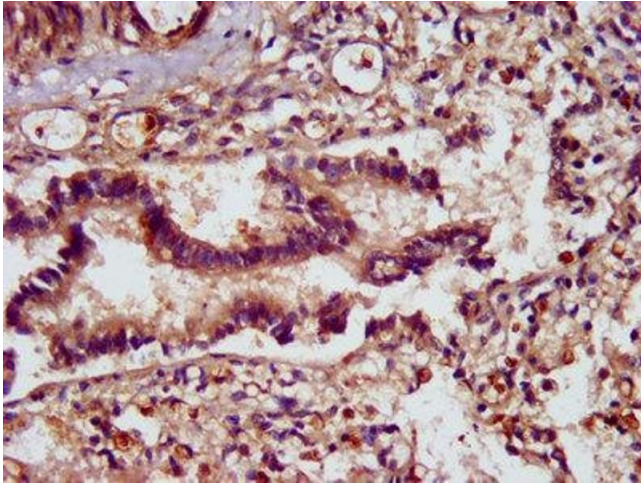
Buffer: Preservative: 0.03 % Proclin 300
Constituents: 50 % Glycerol, 0.01M PBS, pH 7.4

Preservative: ProClin

Precaution of Use: This product contains ProClin: a POISONOUS AND HAZARDOUS SUBSTANCE which should be handled by trained staff only.

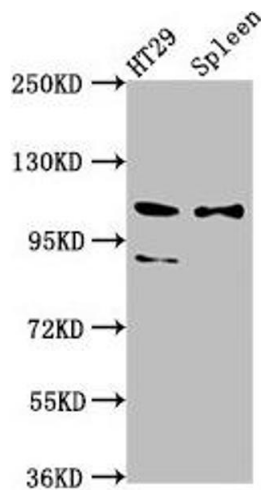
Storage: -20 °C,-80 °C

Storage Comment: Upon receipt, store at -20°C or -80°C. Avoid repeated freeze.



Immunohistochemistry

Image 1. IHC image of ABIN7169639 diluted at 1:400 and staining in paraffin-embedded human lung tissue performed on a Leica Bond™ system. After dewaxing and hydration, antigen retrieval was mediated by high pressure in a citrate buffer (pH 6.0). Section was blocked with 10% normal goat serum 30min at RT. Then primary antibody (1% BSA) was incubated at 4°C overnight. The primary is detected by a biotinylated secondary antibody and visualized using an HRP conjugated SP system.



Western Blotting

Image 2. Western Blot Positive WB detected in: HT29 whole cell lysate, Rat spleen tissue All lanes: SCUBE2 antibody at 8.7 µg/mL Secondary Goat polyclonal to rabbit IgG at 1/50000 dilution Predicted band size: 110, 107, 89 kDa Observed band size: 110, 89 kDa