



[Go to Product page](#)

Datasheet for ABIN7169659  
**anti-SRPRB antibody (AA 58-271)**

2 Images

Overview

Quantity:	100 µg
Target:	SRPRB
Binding Specificity:	AA 58-271
Reactivity:	Human
Host:	Rabbit
Clonality:	Polyclonal
Conjugate:	This SRPRB antibody is un-conjugated
Application:	Western Blotting (WB), ELISA, Immunofluorescence (IF)

Product Details

Immunogen:	Recombinant Human Signal recognition particle receptor subunit beta protein (58-271AA)
Isotype:	IgG
Cross-Reactivity:	Human
Purification:	>95%, Protein G purified

Target Details

Target:	SRPRB
Alternative Name:	SRPRB ( <a href="#">SRPRB Products</a> )
Background:	Background: Component of the SRP (signal recognition particle) receptor. Ensures, in conjunction with the signal recognition particle, the correct targeting of the nascent secretory

## Target Details

---

proteins to the endoplasmic reticulum membrane system. Has GTPase activity. May mediate the membrane association of SRPR .

Aliases: APMCF1 antibody, Protein APMCF1 antibody, Signal recognition particle receptor B subunit antibody, Signal recognition particle receptor beta subunit antibody, Signal recognition particle receptor subunit beta antibody, SR-beta antibody, SRbeta antibody, SRPR beta antibody, Srprb antibody, SRPRB\_HUMAN antibody

---

UniProt: [Q9Y5M8](#)

---

Pathways: [ER-Nucleus Signaling](#)

## Application Details

---

Application Notes: Recommended dilution: WB:1:1000-1:5000, IF:1:50-1:200,

---

Restrictions: For Research Use only

## Handling

---

Format: Liquid

---

Buffer: Preservative: 0.03 % Proclin 300  
Constituents: 50 % Glycerol, 0.01M PBS, PH 7.4

---

Preservative: ProClin

---

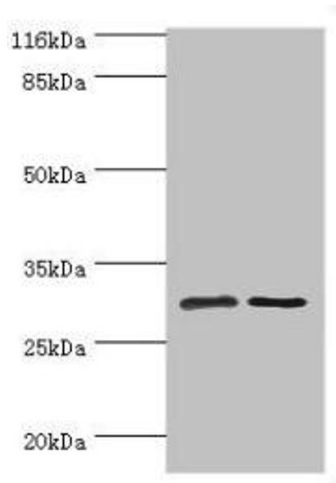
Precaution of Use: This product contains ProClin: a POISONOUS AND HAZARDOUS SUBSTANCE which should be handled by trained staff only.

---

Storage: -20 °C,-80 °C

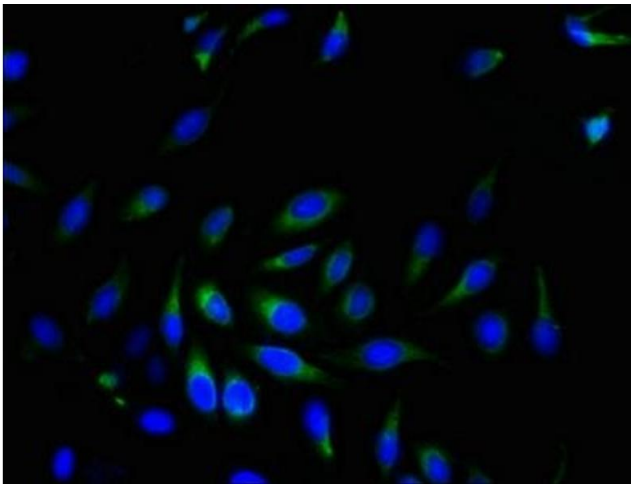
---

Storage Comment: Upon receipt, store at -20°C or -80°C. Avoid repeated freeze.



### Western Blotting

**Image 1.** Western blot All lanes: SRPRB antibody at 2  $\mu$ g/mL  
Lane 1: HepG2 whole cell lysate Lane 2: Hela whole cell lysate Secondary Goat polyclonal to rabbit IgG at 1/10000 dilution Predicted band size: 30 kDa Observed band size: 30 kDa



### Immunofluorescence

**Image 2.** Immunofluorescent analysis of HeLa cells using ABIN7169659 at dilution of 1:100 and Alexa Fluor 488-conjugated AffiniPure Goat Anti-Rabbit IgG(H+L)