



[Go to Product page](#)

Datasheet for ABIN7169695  
**anti-SIPA1L2 antibody (AA 522-778)**

2 Images

Overview

Quantity:	100 µg
Target:	SIPA1L2
Binding Specificity:	AA 522-778
Reactivity:	Human
Host:	Rabbit
Clonality:	Polyclonal
Conjugate:	This SIPA1L2 antibody is un-conjugated
Application:	ELISA, Immunohistochemistry (IHC)

Product Details

Immunogen:	Recombinant Human Signal-induced proliferation-associated 1-like protein 2 protein (522-778AA)
Isotype:	IgG
Cross-Reactivity:	Human
Purification:	>95%, Protein G purified

Target Details

Target:	SIPA1L2
Alternative Name:	SIPA1L2 ( <a href="#">SIPA1L2 Products</a> )
Background:	SIPA1L2 antibody, KIAA1389 antibody, Signal-induced proliferation-associated 1-like protein 2

## Target Details

antibody, SIPA1-like protein 2 antibody

UniProt: [Q9P2F8](#)

## Application Details

Application Notes: Recommended dilution: IHC:1:20-1:200,

Restrictions: For Research Use only

## Handling

Format: Liquid

Buffer: Preservative: 0.03 % Proclin 300  
Constituents: 50 % Glycerol, 0.01M PBS, PH 7.4

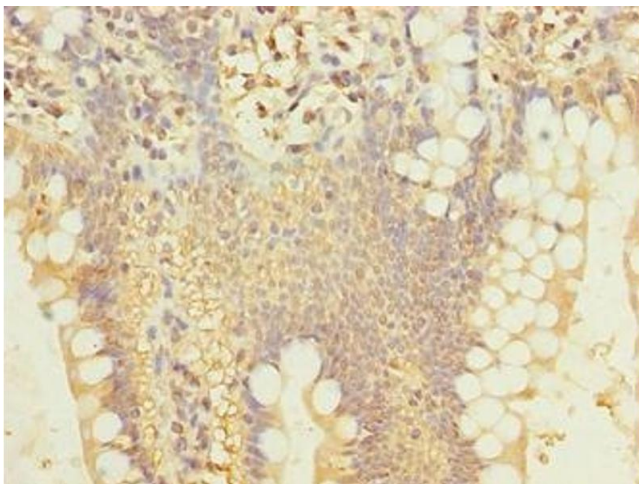
Preservative: ProClin

Precaution of Use: This product contains ProClin: a POISONOUS AND HAZARDOUS SUBSTANCE which should be handled by trained staff only.

Storage: -20 °C,-80 °C

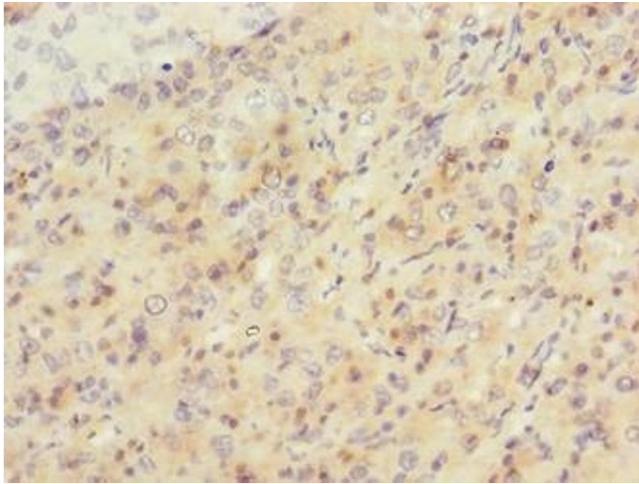
Storage Comment: Upon receipt, store at -20°C or -80°C. Avoid repeated freeze.

## Images



### Immunohistochemistry

**Image 1.** Immunohistochemistry of paraffin-embedded human small intestine tissue using ABIN7169695 at dilution of 1:100



### Immunohistochemistry

**Image 2.** Immunohistochemistry of paraffin-embedded human liver cancer using ABIN7169695 at dilution of 1:100