

Datasheet for ABIN7169724  
**anti-SIM1 antibody (AA 347-434)**[Go to Product page](#)

## 1 Image

## Overview

Quantity:	100 µL
Target:	SIM1
Binding Specificity:	AA 347-434
Reactivity:	Human
Host:	Rabbit
Clonality:	Polyclonal
Conjugate:	This SIM1 antibody is un-conjugated
Application:	ELISA, Immunofluorescence (IF)

## Product Details

Immunogen:	Recombinant Human Single-minded homolog 1 protein (347-434aa)
Isotype:	IgG
Cross-Reactivity:	Human
Purification:	>95%, Protein G purified

## Target Details

Target:	SIM1
Alternative Name:	SIM1 ( <a href="#">SIM1 Products</a> )
Background:	Background: Transcriptional factor that may have pleiotropic effects during embryogenesis and in the adult.

## Target Details

Aliases: Single-minded homolog 1 (Class E basic helix-loop-helix protein 14) (bHLHe14), SIM1, BHLHE14

UniProt: [P81133](#)

## Application Details

Application Notes: Recommended dilution: IF:1:100-1:500,

Restrictions: For Research Use only

## Handling

Format: Liquid

Buffer: Preservative: 0.03 % Proclin 300  
Constituents: 50 % Glycerol, 0.01M PBS, pH 7.4

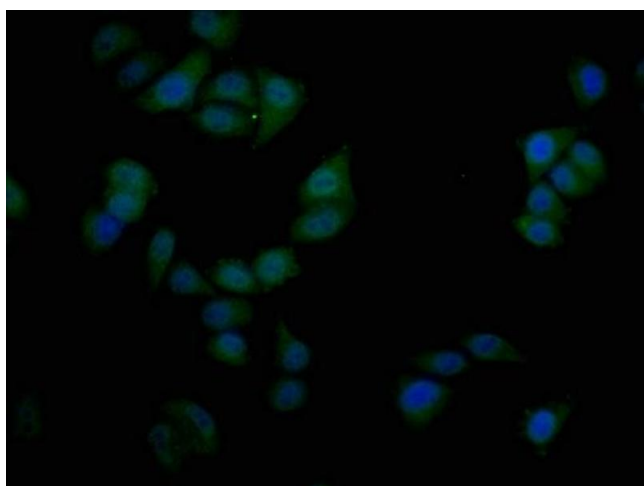
Preservative: ProClin

Precaution of Use: This product contains ProClin: a POISONOUS AND HAZARDOUS SUBSTANCE which should be handled by trained staff only.

Storage: -20 °C,-80 °C

Storage Comment: Upon receipt, store at -20°C or -80°C. Avoid repeated freeze.

## Images



### Immunofluorescence

**Image 1.** Immunofluorescence staining of Hela cells with ABIN7169724 at 1:50, counter-stained with DAPI. The cells were fixed in 4 % formaldehyde and blocked in 10 % normal Goat Serum. The cells were then incubated with the antibody overnight at 4 °C. The secondary antibody was Alexa Fluor 488-conjugated AffiniPure Goat Anti-Rabbit IgG(H+L).