



[Go to Product page](#)

Datasheet for ABIN7169787  
**anti-SLAMF8 antibody (AA 23-233)**

1 Image

### Overview

|                      |                                       |
|----------------------|---------------------------------------|
| Quantity:            | 100 µg                                |
| Target:              | SLAMF8                                |
| Binding Specificity: | AA 23-233                             |
| Reactivity:          | Human                                 |
| Host:                | Rabbit                                |
| Clonality:           | Polyclonal                            |
| Conjugate:           | This SLAMF8 antibody is un-conjugated |
| Application:         | ELISA, Immunohistochemistry (IHC)     |

### Product Details

|                   |   |
|-------------------|---|
| Immunogen:        | Recombinant Human SLAM family member 8 protein (23-233AA) |
| Isotype:          | IgG   |
| Cross-Reactivity: | Human   |
| Purification:     | >95%, Protein G purified                                  |

### Target Details

|                   |   |
|-------------------|---|
| Target:           | SLAMF8  |
| Alternative Name: | SLAMF8 ( <a href="#">SLAMF8 Products</a> )  |
| Background:       | Background: May play a role in B-lineage commitment and/or modulation of signaling through the B-cell receptor. |

## Target Details

Aliases: B-lymphocyte activator macrophage expressed antibody, BCM-like membrane protein antibody, BLAME antibody, CD353 antibody, SBBI42 antibody, SLAF8\_HUMAN antibody, SLAM family member 8 antibody, Slamf8 antibody

UniProt: [Q9P0V8](#)

## Application Details

Application Notes: Recommended dilution: IHC:1:20-1:200,

Restrictions: For Research Use only

## Handling

Format: Liquid

Buffer: Preservative: 0.03 % Proclin 300  
Constituents: 50 % Glycerol, 0.01M PBS, PH 7.4

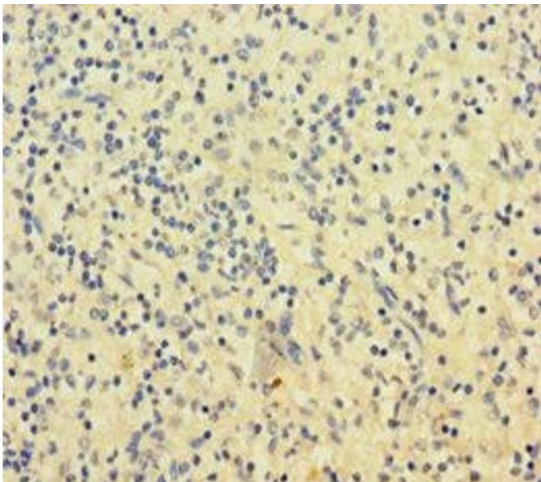
Preservative: ProClin

Precaution of Use: This product contains ProClin: a POISONOUS AND HAZARDOUS SUBSTANCE which should be handled by trained staff only.

Storage: -20 °C,-80 °C

Storage Comment: Upon receipt, store at -20°C or -80°C. Avoid repeated freeze.

## Images



### Immunohistochemistry

**Image 1.** Immunohistochemistry of paraffin-embedded human spleen tissue using ABIN7169787 at dilution of 1:100