



[Go to Product page](#)

Datasheet for ABIN7169791
anti-SLC2A4RG antibody (AA 1-100)

2 Images

Overview

Quantity:	100 µg
Target:	SLC2A4RG
Binding Specificity:	AA 1-100
Reactivity:	Human
Host:	Rabbit
Clonality:	Polyclonal
Conjugate:	This SLC2A4RG antibody is un-conjugated
Application:	ELISA, Immunohistochemistry (IHC), Immunofluorescence (IF)

Product Details

Immunogen:	Recombinant Human SLC2A4 regulator protein (1-100AA)
Isotype:	IgG
Cross-Reactivity:	Human
Purification:	>95%, Protein G purified

Target Details

Target:	SLC2A4RG
Alternative Name:	SLC2A4RG (SLC2A4RG Products)
Background:	Background: Transcription factor involved in SLC2A4 and HD gene transactivation. Binds to the consensus sequence 5'GCCGGCG-3'.

Target Details

Aliases: GEF antibody, GLUT4 enhancer factor antibody, HDBP 1 antibody, HDBP-1 antibody, HDBP1 antibody, Huntington disease gene regulatory region binding protein 1 antibody, Huntington disease gene regulatory region-binding protein 1 antibody, S2A4R_HUMAN antibody, Si 1 2 19 antibody, Si 1 2 antibody, SLC2A4 regulator antibody, SLC2A4RG antibody, Zinc finger protein 2 5 Glut4 enhancer factor antibody

UniProt: [Q9NR83](#)

Pathways: [AMPK Signaling](#)

Application Details

Application Notes: Recommended dilution: IHC:1:500-1:1000, IF:1:200-1:500,

Restrictions: For Research Use only

Handling

Format: Liquid

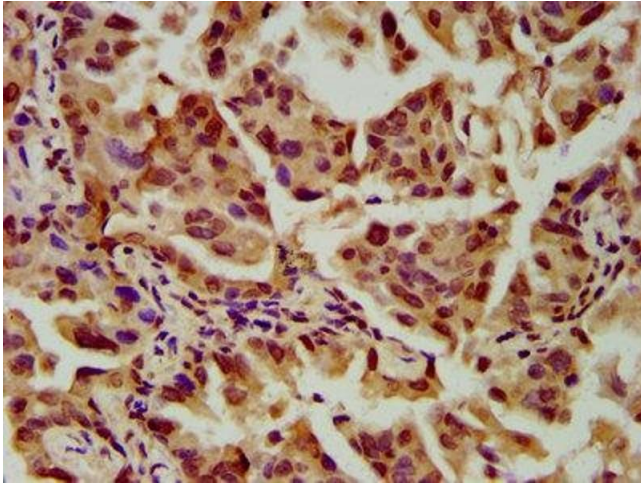
Buffer: Preservative: 0.03 % Proclin 300
Constituents: 50 % Glycerol, 0.01M PBS, pH 7.4

Preservative: ProClin

Precaution of Use: This product contains ProClin: a POISONOUS AND HAZARDOUS SUBSTANCE which should be handled by trained staff only.

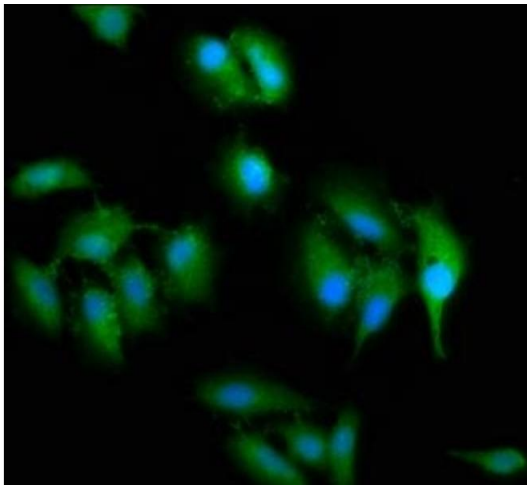
Storage: -20 °C,-80 °C

Storage Comment: Upon receipt, store at -20°C or -80°C. Avoid repeated freeze.



Immunohistochemistry

Image 1. IHC image of ABIN7169791 diluted at 1:600 and staining in paraffin-embedded human lung cancer performed on a Leica Bond™ system. After dewaxing and hydration, antigen retrieval was mediated by high pressure in a citrate buffer (pH 6.0). Section was blocked with 10% normal goat serum 30min at RT. Then primary antibody (1% BSA) was incubated at 4°C overnight. The primary is detected by a biotinylated secondary antibody and visualized using an HRP conjugated SP system.



Immunofluorescence

Image 2. Immunofluorescence staining of HeLa cells with ABIN7169791 at 1:200, counter-stained with DAPI. The cells were fixed in 4% formaldehyde, permeabilized using 0.2% Triton X-100 and blocked in 10% normal Goat Serum. The cells were then incubated with the antibody overnight at 4°C. The secondary antibody was Alexa Fluor 488-conjugated AffiniPure Goat Anti-Rabbit IgG(H+L).