

Datasheet for ABIN7169835
anti-KCNN3 antibody (AA 240-426)[Go to Product page](#)

1 Image

Overview

Quantity:	100 µL
Target:	KCNN3
Binding Specificity:	AA 240-426
Reactivity:	Human
Host:	Rabbit
Clonality:	Polyclonal
Conjugate:	This KCNN3 antibody is un-conjugated
Application:	ELISA, Immunofluorescence (IF)

Product Details

Immunogen:	Recombinant Human Small conductance calcium-activated potassium channel protein 3 protein (240-426AA)
Isotype:	IgG
Cross-Reactivity:	Human
Purification:	>95%, Protein G purified

Target Details

Target:	KCNN3
Alternative Name:	KCNN3 (KCNN3 Products)
Background:	Background: Forms a voltage-independent potassium channel activated by intracellular

Target Details

calcium. Activation is followed by membrane hyperpolarization. Thought to regulate neuronal excitability by contributing to the slow component of synaptic afterhyperpolarization. The channel is blocked by apamin.

Aliases: hSK3 antibody, KCa2.3 antibody, Kcnn3 antibody, KCNN3_HUMAN antibody, Potassium calcium activated channel subfamily N member 3 antibody, Potassium channel calcium activated intermediate/small conductance subfamily N alpha member 3 antibody, Potassium channel, calcium activated, intermediate/small conductance, subfamily N, member 3 antibody, Potassium intermediate/small conductance calcium activated channel subfamily N member 3 antibody, SK3 antibody, SKCa 3 antibody, SKCa3 antibody, Small conductance calcium-activated potassium channel protein 3 antibody

UniProt: [Q9UGI6](#)

Application Details

Application Notes: Recommended dilution: IF:1:50-1:200,

Restrictions: For Research Use only

Handling

Format: Liquid

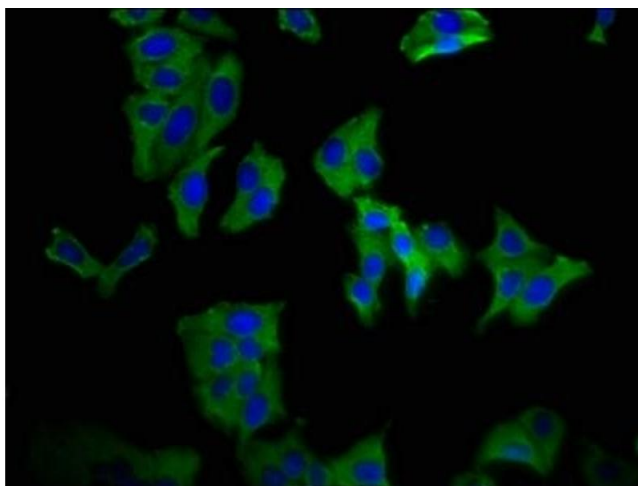
Buffer: Preservative: 0.03 % Proclin 300
Constituents: 50 % Glycerol, 0.01M PBS, pH 7.4

Preservative: ProClin

Precaution of Use: This product contains ProClin: a POISONOUS AND HAZARDOUS SUBSTANCE which should be handled by trained staff only.

Storage: -20 °C, -80 °C

Storage Comment: Upon receipt, store at -20°C or -80°C. Avoid repeated freeze.



Immunofluorescence

Image 1. Immunofluorescence staining of HepG2 cells with ABIN7169835 at 1:66, counter-stained with DAPI. The cells were fixed in 4 % formaldehyde, permeabilized using 0.2 % Triton X-100 and blocked in 10 % normal Goat Serum. The cells were then incubated with the antibody overnight at 4 °C. The secondary antibody was Alexa Fluor 488-conjugated AffiniPure Goat Anti-Rabbit IgG(H+L).