

Datasheet for ABIN7169865
anti-SNRPE antibody (AA 1-92)

3 Images

[Go to Product page](#)

Overview

Quantity:	100 µg
Target:	SNRPE
Binding Specificity:	AA 1-92
Reactivity:	Human
Host:	Rabbit
Clonality:	Polyclonal
Conjugate:	This SNRPE antibody is un-conjugated
Application:	Western Blotting (WB), Immunohistochemistry (IHC), ELISA, Immunofluorescence (IF)

Product Details

Immunogen:	Recombinant Human Small nuclear ribonucleoprotein E protein (1-92AA)
Isotype:	IgG
Cross-Reactivity:	Human
Purification:	>95%, Protein G purified

Target Details

Target:	SNRPE
Alternative Name:	SNRPE (SNRPE Products)
Background:	Background: Core component of the spliceosomal U1, U2, U4 and U5 small nuclear ribonucleoproteins (snRNPs), the building blocks of the spliceosome. Thereby, plays an

Target Details

important role in the splicing of cellular pre-mRNAs. Most spliceosomal snRNPs contain a common set of Sm proteins SNRPB, SNRPD1, SNRPD2, SNRPD3, SNRPE, SNRPF and SNRPG that assemble in a heptameric protein ring on the Sm site of the small nuclear RNA to form the core snRNP. As part of the U7 snRNP it is involved in histone 3' end processing. May indirectly play a role in hair development.

Aliases: AL022645 antibody, B raf antibody, B-raf antibody, Braf antibody, C76690 antibody, HYPT11 antibody, RUXE_HUMAN antibody, Sm protein E antibody, Sm-E antibody, Small nuclear ribonucleoprotein E antibody, SmE antibody, snRNP-E antibody, snRNPE antibody, snrpe antibody

UniProt: [P62304](#)

Pathways: [Ribonucleoprotein Complex Subunit Organization](#), [Hepatitis C](#)

Application Details

Application Notes: Recommended dilution: WB:1:500-1:5000, IHC:1:200-1:500, IF:1:50-1:200,

Restrictions: For Research Use only

Handling

Format: Liquid

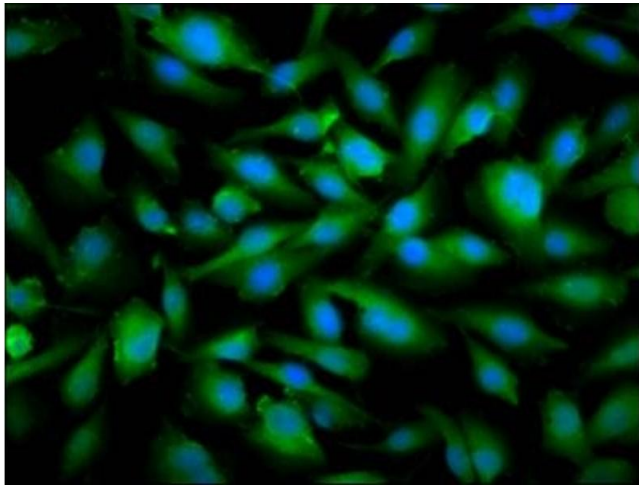
Buffer: Preservative: 0.03 % Proclin 300
Constituents: 50 % Glycerol, 0.01M PBS, pH 7.4

Preservative: ProClin

Precaution of Use: This product contains ProClin: a POISONOUS AND HAZARDOUS SUBSTANCE which should be handled by trained staff only.

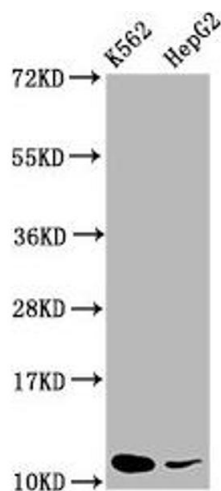
Storage: -20 °C,-80 °C

Storage Comment: Upon receipt, store at -20°C or -80°C. Avoid repeated freeze.



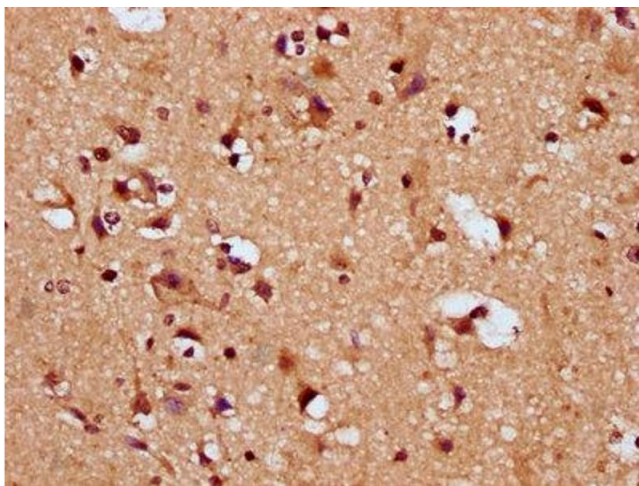
Immunofluorescence

Image 1. Immunofluorescence staining of U251 cells with ABIN7169865 at 1:66, counter-stained with DAPI. The cells were fixed in 4% formaldehyde, permeabilized using 0.2% Triton X-100 and blocked in 10% normal Goat Serum. The cells were then incubated with the antibody overnight at 4°C. The secondary antibody was Alexa Fluor 488-conjugated AffiniPure Goat Anti-Rabbit IgG(H+L).



Western Blotting

Image 2. Western Blot Positive WB detected in: K562 whole cell lysate, HepG2 whole cell lysate. All lanes: SNRPE antibody at 5.2 µg/mL. Secondary Goat polyclonal to rabbit IgG at 1/50000 dilution. Predicted band size: 11 kDa. Observed band size: 11 kDa.



Immunohistochemistry

Image 3. IHC image of ABIN7169865 diluted at 1:200 and staining in paraffin-embedded human brain tissue performed on a Leica Bond™ system. After dewaxing and hydration, antigen retrieval was mediated by high pressure in a citrate buffer (pH 6.0). Section was blocked with 10% normal goat serum 30min at RT. Then primary antibody (1% BSA) was incubated at 4°C overnight. The primary is detected by a biotinylated secondary antibody and visualized using an HRP conjugated SP system.