

Datasheet for ABIN7169898  
**anti-SMO antibody (AA 28-233)**[Go to Product page](#)

## 3 Images

## Overview

Quantity:	100 µg
Target:	SMO
Binding Specificity:	AA 28-233
Reactivity:	Human
Host:	Rabbit
Clonality:	Polyclonal
Conjugate:	This SMO antibody is un-conjugated
Application:	Western Blotting (WB), ELISA, Immunohistochemistry (IHC), Immunofluorescence (IF)

## Product Details

Immunogen:	Recombinant Human Smoothed homolog protein (28-233AA)
Isotype:	IgG
Cross-Reactivity:	Human, Mouse
Purification:	>95%, Protein G purified

## Target Details

Target:	SMO
Alternative Name:	SMO ( <a href="#">SMO Products</a> )
Background:	Background: G protein-coupled receptor that probably associates with the patched protein (PTCH) to transduce the hedgehog's proteins signal. Binding of sonic hedgehog (SHH) to its

## Target Details

receptor patched is thought to prevent normal inhibition by patched of smoothened (SMO).

Required for the accumulation of KIF7 and GLI3 in the cilia.

Aliases: Frizzled family member 11 antibody, FZD11 antibody, Gx antibody, Gx protein antibody, Protein Gx antibody, SMO antibody, SMO\_HUMAN antibody, SMOH antibody, Smoothened frizzled family receptor antibody, Smoothened homolog (Drosophila) antibody, Smoothened homolog antibody, Smoothened homolog precursor (SMO) (Gx protein) antibody, Smoothened seven transmembrane spanning receptor antibody

UniProt: [Q99835](#)

Pathways: [Hedgehog Signaling](#)

## Application Details

Application Notes: Recommended dilution: WB:1:1000-1:5000, IHC:1:20-1:200, IF:1:50-1:200,

Restrictions: For Research Use only

## Handling

Format: Liquid

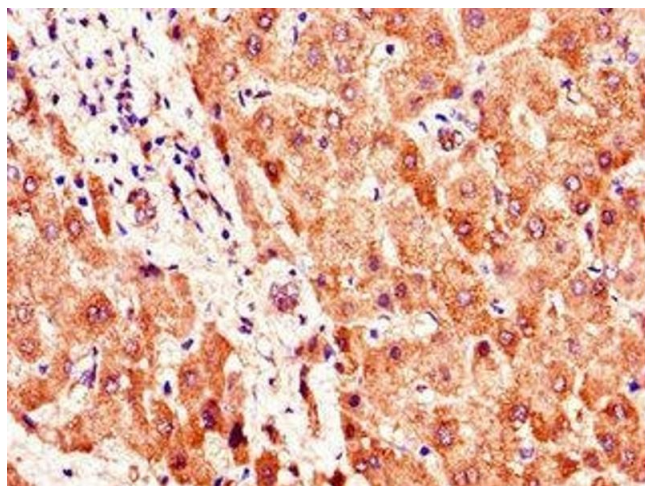
Buffer: Preservative: 0.03 % Proclin 300  
Constituents: 50 % Glycerol, 0.01M PBS, PH 7.4

Preservative: ProClin

Precaution of Use: This product contains ProClin: a POISONOUS AND HAZARDOUS SUBSTANCE which should be handled by trained staff only.

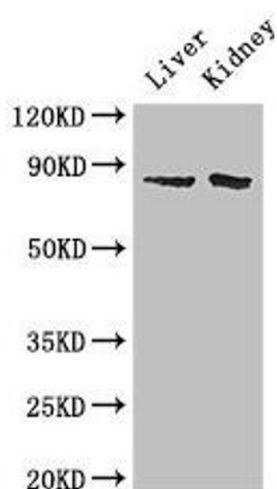
Storage: -20 °C,-80 °C

Storage Comment: Upon receipt, store at -20°C or -80°C. Avoid repeated freeze.



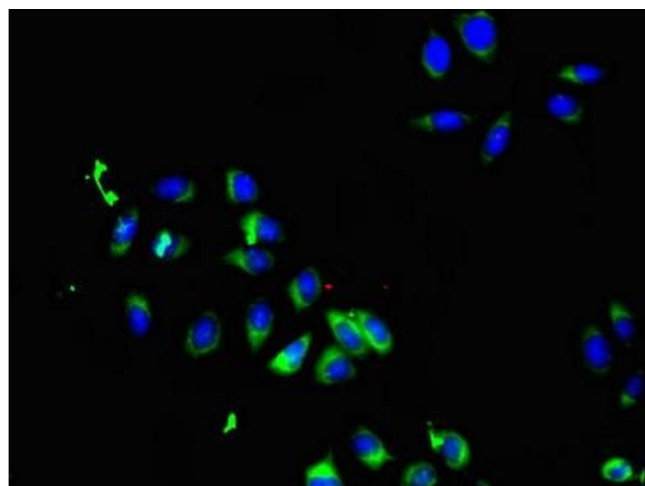
### Immunohistochemistry

**Image 1.** Immunohistochemistry of paraffin-embedded human liver tissue using ABIN7169898 at dilution of 1:100



### Western Blotting

**Image 2.** Western Blot Positive WB detected in: Mouse liver tissue, Mouse kidney tissue All lanes: SMO antibody at 2  $\mu$ g/mL Secondary Goat polyclonal to rabbit IgG at 1/50000 dilution Predicted band size: 87 kDa Observed band size: 87 kDa



### Immunofluorescence

**Image 3.** Immunofluorescent analysis of A549 cells using ABIN7169898 at dilution of 1:100 and Alexa Fluor 488-conjugated AffiniPure Goat Anti-Rabbit IgG(H+L)