

Datasheet for ABIN7169916  
**anti-SCN1A antibody (AA 992-1099)**[Go to Product page](#)

## 2 Images

## Overview

|                      |   |
|----------------------|---|
| Quantity:            | 100 µg  |
| Target:              | SCN1A   |
| Binding Specificity: | AA 992-1099   |
| Reactivity:          | Human   |
| Host:                | Rabbit  |
| Clonality:           | Polyclonal  |
| Conjugate:           | This SCN1A antibody is un-conjugated                  |
| Application:         | ELISA, Western Blotting (WB), Immunofluorescence (IF) |

## Product Details

|                   |   |
|-------------------|---|
| Immunogen:        | Recombinant Human Sodium channel protein type 10 subunit alpha protein (992-1099AA) |
| Isotype:          | IgG   |
| Cross-Reactivity: | Human   |
| Purification:     | >95%, Protein G purified  |

## Target Details

|                   |  |
|-------------------|--|
| Target:           | SCN1A  |
| Alternative Name: | SCN1A ( <a href="#">SCN1A Products</a> )   |
| Background:       | Background: Tetrodotoxin-resistant channel that mediates the voltage-dependent sodium ion permeability of excitable membranes. Assuming opened or closed conformations in response |

## Target Details

to the voltage difference across the membrane, the protein forms a sodium-selective channel through which sodium ions may pass in accordance with their electrochemical gradient. Plays a role in neuropathic pain mechanisms.

Aliases: hPN3 antibody, mPN3 antibody, Peripheral nerve sodium channel 3 antibody, Pn3 (gene name) antibody, PN3 antibody, SCN10A antibody, SCNAA\_HUMAN antibody, Sensory neuron sodium channel antibody, Sns (gene name) antibody, SNS antibody, Sodium channel protein type 10 subunit alpha antibody, Sodium channel protein type X alpha subunit antibody, Sodium channel protein type X subunit alpha antibody, Voltage-gated sodium channel alpha subunit Nav1.8 antibody, Voltage-gated sodium channel subunit alpha Nav1.8 antibody

UniProt: [Q9Y5Y9](#)

## Application Details

Application Notes: Recommended dilution: WB:1:500-1:5000, IF:1:50-1:200,

Restrictions: For Research Use only

## Handling

Format: Liquid

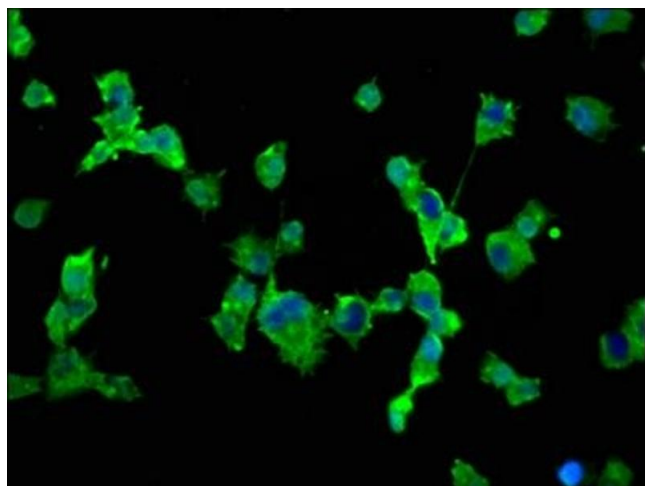
Buffer: Preservative: 0.03 % Proclin 300  
Constituents: 50 % Glycerol, 0.01M PBS, pH 7.4

Preservative: ProClin

Precaution of Use: This product contains ProClin: a POISONOUS AND HAZARDOUS SUBSTANCE which should be handled by trained staff only.

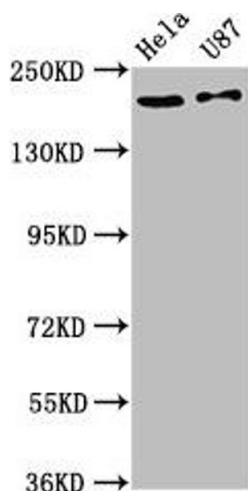
Storage: -20 °C, -80 °C

Storage Comment: Upon receipt, store at -20°C or -80°C. Avoid repeated freeze.



### Immunofluorescence

**Image 1.** Immunofluorescence staining of SH-SY5Y cells with ABIN7169916 at 1:66, counter-stained with DAPI. The cells were fixed in 4 % formaldehyde, permeabilized using 0.2 % Triton X-100 and blocked in 10 % normal Goat Serum. The cells were then incubated with the antibody overnight at 4 °C. The secondary antibody was Alexa Fluor 488-conjugated AffiniPure Goat Anti-Rabbit IgG(H+L).



### Western Blotting

**Image 2.** Western Blot Positive WB detected in: HeLa whole cell lysate, U87 whole cell lysate All lanes: SCN10A antibody at 12 µg/mL Secondary Goat polyclonal to rabbit IgG at 1/50000 dilution Predicted band size: 221 kDa Observed band size: 221 kDa