



[Go to Product page](#)

Datasheet for ABIN7169925  
**anti-SCN7A antibody (AA 265-368)**

3 Images

### Overview

Quantity:	100 µL
Target:	SCN7A
Binding Specificity:	AA 265-368
Reactivity:	Human
Host:	Rabbit
Clonality:	Polyclonal
Conjugate:	This SCN7A antibody is un-conjugated
Application:	ELISA, Western Blotting (WB), Immunohistochemistry (IHC)

### Product Details

Immunogen:	Recombinant Human Sodium channel protein type 7 subunit alpha protein (265-368AA)
Isotype:	IgG
Cross-Reactivity:	Human
Purification:	Antigen Affinity Purified

### Target Details

Target:	SCN7A
Alternative Name:	SCN7A ( <a href="#">SCN7A Products</a> )
Background:	Background: Mediates the voltage-dependent sodium ion permeability of excitable membranes. Assuming opened or closed conformations in response to the voltage difference across the

## Target Details

membrane, the protein forms a sodium-selective channel through which Na(+) ions may pass in accordance with their electrochemical gradient.

Aliases: SCN7A antibody, SCN6A antibody, Sodium channel protein type 7 subunit alpha antibody, Putative voltage-gated sodium channel subunit alpha Nax antibody, Sodium channel protein cardiac and skeletal muscle subunit alpha antibody, Sodium channel protein type VII subunit alpha antibody

UniProt: [Q01118](#)

## Application Details

Application Notes: Recommended dilution: WB:1:1000-1:5000, IHC:1:20-1:200,

Restrictions: For Research Use only

## Handling

Format: Liquid

Buffer: PBS with 0.02 % sodium azide, 50 % glycerol, pH 7.3.

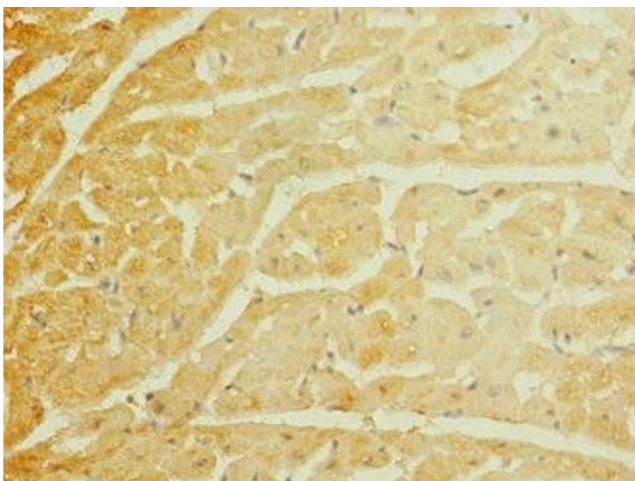
Preservative: Sodium azide

Precaution of Use: This product contains Sodium azide: a POISONOUS AND HAZARDOUS SUBSTANCE which should be handled by trained staff only.

Storage: -20 °C,-80 °C

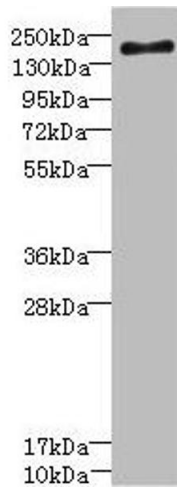
Storage Comment: Upon receipt, store at -20°C or -80°C. Avoid repeated freeze.

## Images



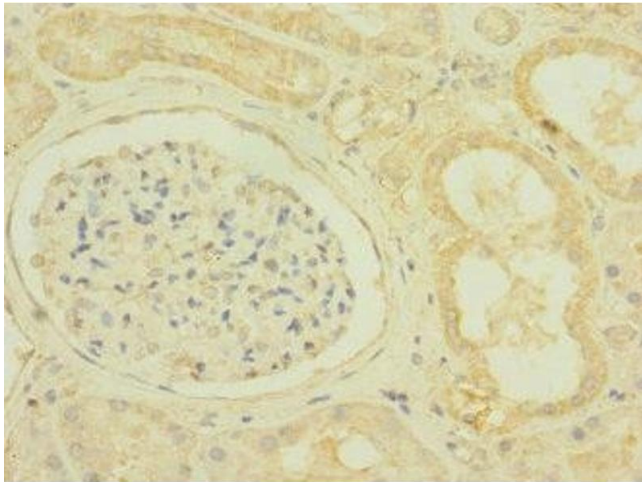
### Immunohistochemistry

**Image 1.** Immunohistochemistry of paraffin-embedded human heart tissue using ABIN7169925 at dilution of 1:100



### Western Blotting

**Image 2.** Western blot All lanes: SCN7A antibody at 2.36  $\mu$ g/mL + Jurkat whole cell lysate Secondary Goat polyclonal to rabbit IgG at 1/10000 dilution Predicted band size: 194 kDa Observed band size: 194 kDa



### Immunohistochemistry

**Image 3.** Immunohistochemistry of paraffin-embedded human kidney tissue using ABIN7169925 at dilution of 1:100