



[Go to Product page](#)

Datasheet for ABIN7169942  
**anti-NALCN antibody (AA 19-141)**

1 Image

Overview

Quantity:	100 µg
Target:	NALCN
Binding Specificity:	AA 19-141
Reactivity:	Human
Host:	Rabbit
Clonality:	Polyclonal
Conjugate:	This NALCN antibody is un-conjugated
Application:	Immunofluorescence (IF), ELISA

Product Details

Immunogen:	Recombinant Human Sodium leak channel non-selective protein (19-141AA)
Isotype:	IgG
Cross-Reactivity:	Human
Purification:	>95%, Protein G purified

Target Details

Target:	NALCN
Alternative Name:	NALCN ( <a href="#">NALCN Products</a> )
Background:	Background: Voltage-independent, cation-nonselective channel which is permeable to sodium, potassium and calcium ions. Responsible for the background sodium ion leak current in

## Target Details

---

neurons and controls neuronal excitability. Activated either by neuropeptides substance P or neurotensin. Required for normal respiratory rhythm and neonatal survival (By similarity).  
Aliases: A530023G15Rik antibody, bA430M15.1 antibody, Canlon antibody, Canlon antibody, FLJ23913 antibody, FLJ44659 antibody, FLJ44764 antibody, Four repeat voltage gated ion channel antibody, MGC74524 antibody, Nalcn antibody, NALCN\_HUMAN antibody, Putative 4 repeat voltage gated ion channel antibody, Sodium leak channel non-selective protein antibody, sodium leak channel, non selective antibody, Vgcnl1 antibody, VGCNL1 protein antibody, voltage gated channel like 1 antibody, Voltage gated channel-like protein 1 antibody

UniProt: [Q8IZF0](#)

## Application Details

---

Application Notes: Recommended dilution: IF:1:50-1:200,

Restrictions: For Research Use only

## Handling

---

Format: Liquid

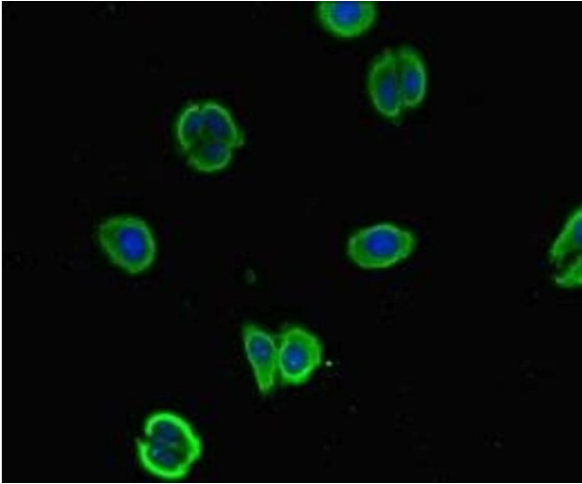
Buffer: Preservative: 0.03 % Proclin 300  
Constituents: 50 % Glycerol, 0.01M PBS, PH 7.4

Preservative: ProClin

Precaution of Use: This product contains ProClin: a POISONOUS AND HAZARDOUS SUBSTANCE which should be handled by trained staff only.

Storage: -20 °C,-80 °C

Storage Comment: Upon receipt, store at -20°C or -80°C. Avoid repeated freeze.



### Immunofluorescence

**Image 1.** Immunofluorescent analysis of HepG2 cells using ABIN7169942 at dilution of 1:100 and Alexa Fluor 488-conjugated AffiniPure Goat Anti-Rabbit IgG(H+L)