



[Go to Product page](#)

Datasheet for ABIN7169946

anti-SLC6A12 antibody (AA 515-614)

2 Images

Overview

Quantity:	100 µL
Target:	SLC6A12
Binding Specificity:	AA 515-614
Reactivity:	Human
Host:	Rabbit
Clonality:	Polyclonal
Conjugate:	This SLC6A12 antibody is un-conjugated
Application:	Western Blotting (WB), ELISA, Immunohistochemistry (IHC)

Product Details

Immunogen:	Recombinant Human Sodium- and chloride-dependent betaine transporter protein (515-614AA)
Isotype:	IgG
Cross-Reactivity:	Human
Purification:	Antigen Affinity Purified

Target Details

Target:	SLC6A12
Alternative Name:	SLC6A12 (SLC6A12 Products)
Background:	Background: Transports betaine and GABA. May have a role in regulation of GABAergic transmission in the brain through the reuptake of GABA into presynaptic terminals, as well as in

Target Details

osmotic regulation.

Aliases: Betaine/GABA transporter 1 antibody, BGT-1 antibody, BGT1 antibody, Gamma aminobutyric acid transporter antibody, GAT2 antibody, Na(+)/Cl(-) betaine/GABA transporter antibody, S6A12_HUMAN antibody, Slc6a12 antibody, Sodium- and chloride-dependent betaine transporter antibody, Solute carrier family 6 (neurotransmitter transporter), member 12 antibody, Solute carrier family 6 (neurotransmitter transporter, betaine/GABA), member 12 antibody, Solute carrier family 6 member 12 antibody

UniProt: [P48065](#)

Application Details

Application Notes: Recommended dilution: WB:1:1000-1:5000, IHC:1:20-1:200,

Restrictions: For Research Use only

Handling

Format: Liquid

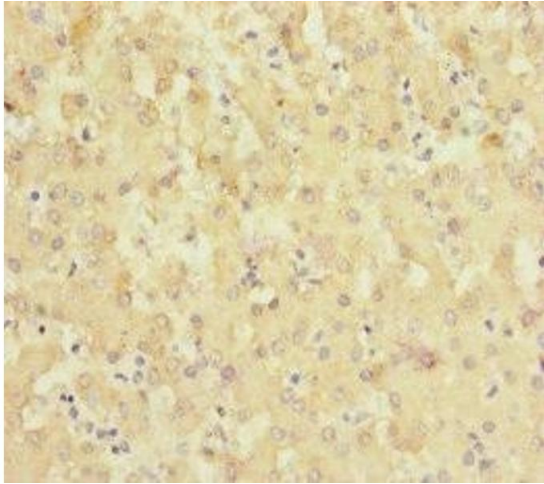
Buffer: PBS with 0.02 % sodium azide, 50 % glycerol, pH 7.3.

Preservative: Sodium azide

Precaution of Use: This product contains Sodium azide: a POISONOUS AND HAZARDOUS SUBSTANCE which should be handled by trained staff only.

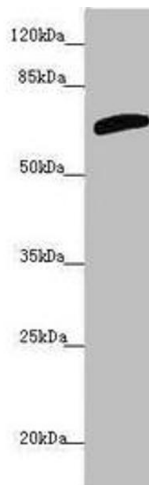
Storage: -20 °C,-80 °C

Storage Comment: Upon receipt, store at -20°C or -80°C. Avoid repeated freeze.



Immunohistochemistry

Image 1. Immunohistochemistry of paraffin-embedded human liver tissue using ABIN7169946 at dilution of 1:100



Western Blotting

Image 2. Western blot All lanes: SLC6A12 antibody at 4.47 μ g/mL + PC-3 whole cell lysate Secondary Goat polyclonal to rabbit IgG at 1/10000 dilution Predicted band size: 70 kDa Observed band size: 70 kDa