

Datasheet for ABIN7169952  
**anti-SLC6A13 antibody (AA 1-40)**[Go to Product page](#)

## 4 Images

## Overview

Quantity:	100 µg
Target:	SLC6A13
Binding Specificity:	AA 1-40
Reactivity:	Human
Host:	Rabbit
Clonality:	Polyclonal
Conjugate:	This SLC6A13 antibody is un-conjugated
Application:	ELISA, Western Blotting (WB), Immunohistochemistry (IHC), Immunofluorescence (IF)

## Product Details

Immunogen:	Recombinant Human Sodium- and chloride-dependent GABA transporter 2 protein (1-40AA)
Isotype:	IgG
Cross-Reactivity:	Human, Mouse
Purification:	>95%, Protein G purified

## Target Details

Target:	SLC6A13
Alternative Name:	SLC6A13 ( <a href="#">SLC6A13 Products</a> )
Background:	Background: Sodium-dependent GABA and taurine transporter. In presynaptic terminals, regulates GABA signaling termination through GABA uptake. May also be involved in beta-

## Target Details

alanine transport.

Aliases: GABA transport protein antibody, GAT 2 antibody, GAT-2 antibody, GAT2 antibody, S6A13\_HUMAN antibody, SLC6A13 antibody, Sodium- and chloride-dependent GABA transporter 2 antibody, Solute carrier family 6 (Neurotransmitter transporter, GABA), member 13 antibody, Solute carrier family 6 member 13 antibody

UniProt: [Q9NSD5](#)

## Application Details

Application Notes: Recommended dilution: WB:1:500-1:5000, IHC:1:20-1:200, IF:1:50-1:200,

Restrictions: For Research Use only

## Handling

Format: Liquid

Buffer: Preservative: 0.03 % Proclin 300  
Constituents: 50 % Glycerol, 0.01M PBS, pH 7.4

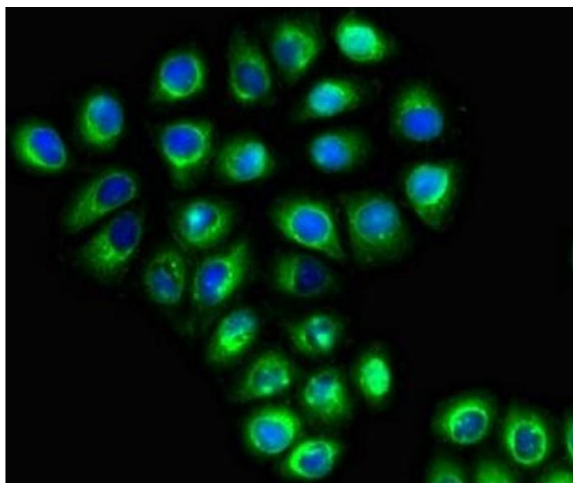
Preservative: ProClin

Precaution of Use: This product contains ProClin: a POISONOUS AND HAZARDOUS SUBSTANCE which should be handled by trained staff only.

Storage: -20 °C,-80 °C

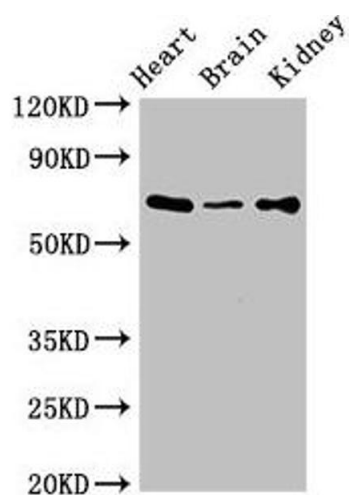
Storage Comment: Upon receipt, store at -20°C or -80°C. Avoid repeated freeze.

## Images



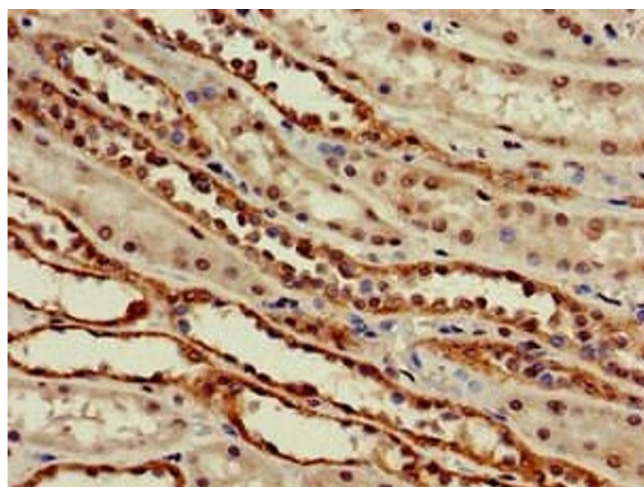
### Immunofluorescence

**Image 1.** Immunofluorescent analysis of A549 cells using ABIN7169952 at dilution of 1:100 and Alexa Fluor 488-conjugated AffiniPure Goat Anti-Rabbit IgG(H+L)



### Western Blotting

**Image 2.** Western Blot Positive WB detected in: Mouse heart tissue, Mouse brain tissue, Mouse kidney tissue All lanes: SLC6A13 antibody at 3 µg/mL Secondary Goat polyclonal to rabbit IgG at 1/50000 dilution Predicted band size: 69, 58, 11 kDa Observed band size: 69 kDa



### Immunohistochemistry

**Image 3.** Immunohistochemistry of paraffin-embedded human kidney tissue using ABIN7169952 at dilution of 1:100

Please check the [product details page](#) for more images. Overall 4 images are available for ABIN7169952.