



[Go to Product page](#)

Datasheet for ABIN7169968

anti-Slc38a5 antibody (AA 1-48)

1 Image

Overview

Quantity:	100 µg
Target:	Slc38a5
Binding Specificity:	AA 1-48
Reactivity:	Human
Host:	Rabbit
Clonality:	Polyclonal
Conjugate:	This Slc38a5 antibody is un-conjugated
Application:	ELISA, Immunofluorescence (IF)

Product Details

Immunogen:	Recombinant Human Sodium-coupled neutral amino acid transporter 5 protein (1-48AA)
Isotype:	IgG
Cross-Reactivity:	Human
Purification:	>95%, Protein G purified

Target Details

Target:	Slc38a5
Alternative Name:	SLC38A5 (Slc38a5 Products)
Background:	Background: Functions as a sodium-dependent amino acid transporter which countertransport protons. Mediates the saturable, pH-sensitive, and electrogenic cotransport of several neutral

Target Details

amino acids including glycine, asparagine, alanine, serine, glutamine and histidine with sodium.
Aliases: Amino acid transporter system N2 antibody, JM 24 antibody, JM24 antibody, pp7194 antibody, S38A5 antibody, S38A5_HUMAN antibody, Slc38a5 antibody, SLC8 A5 antibody, SLC8A 5 antibody, SN 2 antibody, SN2 antibody, SNAT 5 antibody, SNAT5 antibody, Sodium coupled neutral amino acid transporter 5 antibody, Sodium coupled neutral amino acid transporter5 antibody, Sodium-coupled neutral amino acid transporter 5 antibody, Solute carrier family 38 member 5 antibody, Solute carrier family 38 member5 antibody, System N transporter 2 antibody, System N transporter2 antibody

UniProt: [Q8WUX1](#)

Application Details

Application Notes: Recommended dilution: IF:1:50-1:200,

Restrictions: For Research Use only

Handling

Format: Liquid

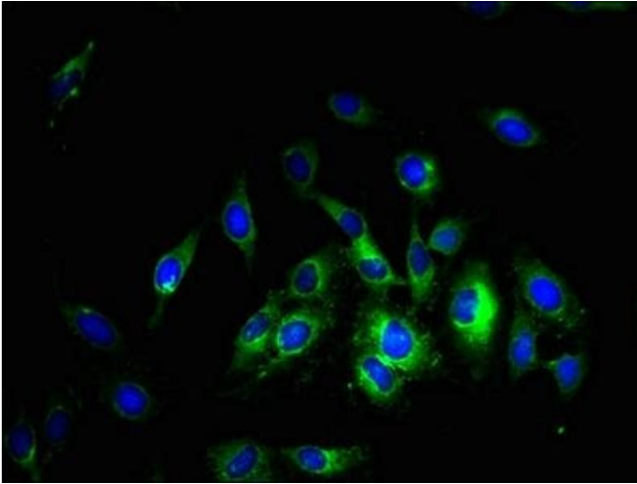
Buffer: Preservative: 0.03 % Proclin 300
Constituents: 50 % Glycerol, 0.01M PBS, PH 7.4

Preservative: ProClin

Precaution of Use: This product contains ProClin: a POISONOUS AND HAZARDOUS SUBSTANCE which should be handled by trained staff only.

Storage: -20 °C,-80 °C

Storage Comment: Upon receipt, store at -20°C or -80°C. Avoid repeated freeze.



Immunofluorescence

Image 1. Immunofluorescent analysis of HeLa cells using ABIN7169968 at dilution of 1:100 and Alexa Fluor 488-conjugated AffiniPure Goat Anti-Rabbit IgG(H+L)