

Datasheet for ABIN7169989  
**anti-Solute Carrier Family 34 (Type II Sodium/phosphate  
Contransporter), Member 1 (SLC34A1) (AA 1-103) antibody**



[Go to Product page](#)

3 Images

Overview

Quantity:	100 µL
Target:	Solute Carrier Family 34 (Type II Sodium/phosphate Contransporter), Member 1 (SLC34A1)
Binding Specificity:	AA 1-103
Reactivity:	Human
Host:	Rabbit
Clonality:	Polyclonal
Conjugate:	Un-conjugated
Application:	Western Blotting (WB), ELISA, Immunohistochemistry (IHC)

Product Details

Immunogen:	Recombinant Human Sodium-dependent phosphate transport protein 2A protein (1-103AA)
Isotype:	IgG
Cross-Reactivity:	Human, Mouse
Purification:	Antigen Affinity Purified

Target Details

Target:	Solute Carrier Family 34 (Type II Sodium/phosphate Contransporter), Member 1 (SLC34A1)
Alternative Name:	SLC34A1 ( <a href="#">SLC34A1 Products</a> )
Background:	Background: May be involved in actively transporting phosphate into cells via Na(+) cotransport in the renal brush border membrane. Probably mediates 70-80 % of the apical influx.

## Target Details

Aliases: SLC34A1 antibody, NPT2 antibody, SLC17A2 antibody, Sodium-dependent phosphate transport protein 2A antibody, Sodium-phosphate transport protein 2A antibody, Na(+)-dependent phosphate cotransporter 2A antibody, NaPi-3 antibody, Sodium/phosphate cotransporter 2A antibody, Na(+)/Pi cotransporter 2A antibody, NaPi-2a antibody, Solute carrier family 34 member 1 antibody

UniProt: [Q06495](#)

## Application Details

Application Notes: Recommended dilution: WB:1:1000-1:5000, IHC:1:20-1:200,

Restrictions: For Research Use only

## Handling

Format: Liquid

Buffer: PBS with 0.02 % sodium azide, 50 % glycerol, pH 7.3.

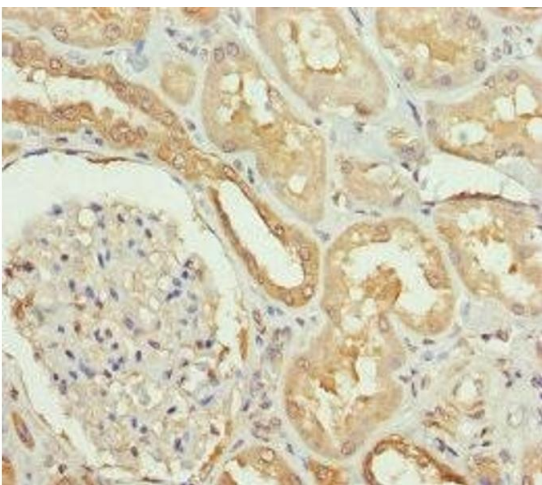
Preservative: Sodium azide

Precaution of Use: This product contains Sodium azide: a POISONOUS AND HAZARDOUS SUBSTANCE which should be handled by trained staff only.

Storage: -20 °C,-80 °C

Storage Comment: Upon receipt, store at -20°C or -80°C. Avoid repeated freeze.

## Images



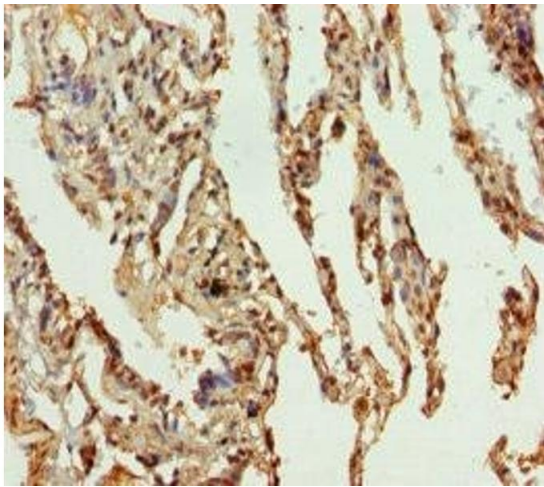
### Immunohistochemistry

**Image 1.** Immunohistochemistry of paraffin-embedded human kidney tissue using ABIN7169989 at dilution of 1:100



### Western Blotting

**Image 2.** Western blot All lanes: SLC34A1 antibody at 2.34  $\mu$ g/mL + Mouse brain tissue Secondary Goat polyclonal to rabbit IgG at 1/10000 dilution Predicted band size: 69, 37 kDa Observed band size: 69 kDa



### Immunohistochemistry

**Image 3.** Immunohistochemistry of paraffin-embedded human lung tissue using ABIN7169989 at dilution of 1:100