

Datasheet for ABIN7169994
anti-SLC34A3 antibody (AA 1-76)[Go to Product page](#)

2 Images

Overview

Quantity:	100 µg
Target:	SLC34A3
Binding Specificity:	AA 1-76
Reactivity:	Human
Host:	Rabbit
Clonality:	Polyclonal
Conjugate:	This SLC34A3 antibody is un-conjugated
Application:	ELISA, Immunohistochemistry (IHC), Immunofluorescence (IF)

Product Details

Immunogen:	Recombinant Human Sodium-dependent phosphate transport protein 2C protein (1-76AA)
Isotype:	IgG
Cross-Reactivity:	Human
Purification:	>95%, Protein G purified

Target Details

Target:	SLC34A3
Alternative Name:	SLC34A3 (SLC34A3 Products)
Background:	Background: May be involved in actively transporting phosphate into cells via Na(+) cotransport in the renal brush border membrane. Probably mediates 20-30 % of the apical influx.

Target Details

Aliases: HHRH antibody, Na(+) dependent phosphate cotransporter 2C antibody, Na(+) Pi cotransporter 2C antibody, Na(+)-dependent phosphate cotransporter 2C antibody, Na(+)/Pi cotransporter 2C antibody, NaPi 2c antibody, NaPi-2c antibody, NPT2C antibody, NPT2C_HUMAN antibody, NPTIIC antibody, SLC34A3 antibody, Sodium dependent phosphate transport protein 2C antibody, Sodium inorganic phosphate cotransporter IIC antibody, Sodium phosphate cotransporter 2C antibody, Sodium phosphate transport protein 2C antibody, Sodium-dependent phosphate transport protein 2C antibody, Sodium-phosphate transport protein 2C antibody, Sodium/inorganic phosphate cotransporter IIC antibody, Sodium/inorganic phosphate cotransporter, type IIC antibody, Sodium/phosphate cotransporter 2C antibody, solute carrier family 34 (sodium phosphate) member 3 antibody, solute carrier family 34 (sodium/phosphate cotransporter), member 3 antibody, solute carrier family 34 (type II sodium/phosphate cotransporter), member 3 antibody, Solute carrier family 34 member 3 antibody, type IIC Na+ Pi cotransporter antibody, Type IIC Na+/Pi cotransporter antibody

UniProt: [Q8N130](#)

Application Details

Application Notes: Recommended dilution: IHC:1:200-1:500, IF:1:50-1:200,

Restrictions: For Research Use only

Handling

Format: Liquid

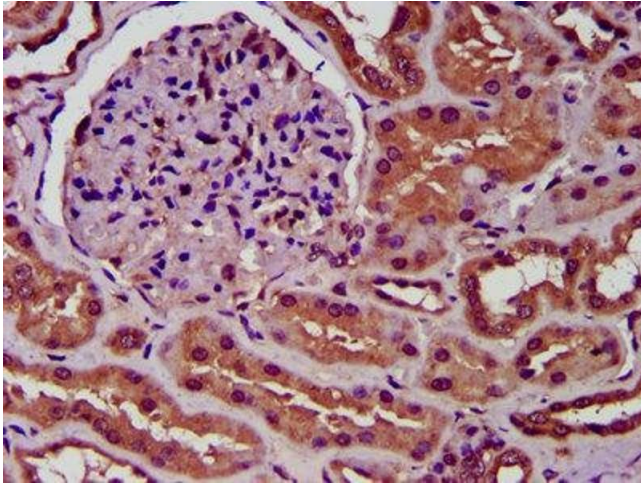
Buffer: Preservative: 0.03 % Proclin 300
Constituents: 50 % Glycerol, 0.01M PBS, pH 7.4

Preservative: ProClin

Precaution of Use: This product contains ProClin: a POISONOUS AND HAZARDOUS SUBSTANCE which should be handled by trained staff only.

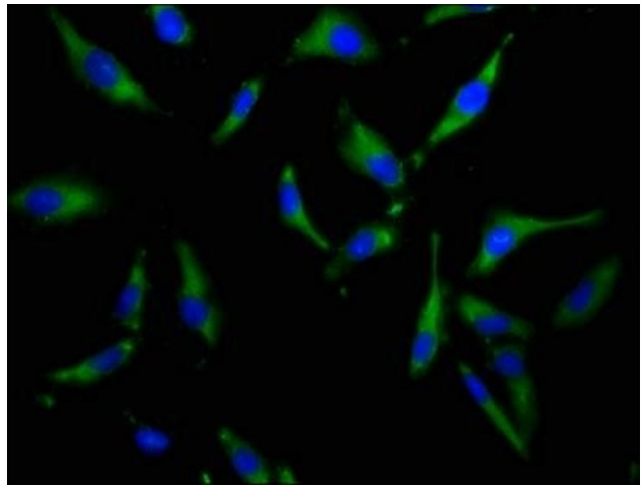
Storage: -20 °C,-80 °C

Storage Comment: Upon receipt, store at -20°C or -80°C. Avoid repeated freeze.



Immunohistochemistry

Image 1. IHC image of ABIN7169994 diluted at 1:300 and staining in paraffin-embedded human kidney tissue performed on a Leica Bond™ system. After dewaxing and hydration, antigen retrieval was mediated by high pressure in a citrate buffer (pH 6.0). Section was blocked with 10% normal goat serum 30min at RT. Then primary antibody (1% BSA) was incubated at 4°C overnight. The primary is detected by a biotinylated secondary antibody and visualized using an HRP conjugated SP system.



Immunofluorescence

Image 2. Immunofluorescence staining of HeLa cells with ABIN7169994 at 1:100, counter-stained with DAPI. The cells were fixed in 4% formaldehyde, permeabilized using 0.2% Triton X-100 and blocked in 10% normal Goat Serum. The cells were then incubated with the antibody overnight at 4°C. The secondary antibody was Alexa Fluor 488-conjugated AffiniPure Goat Anti-Rabbit IgG(H+L).